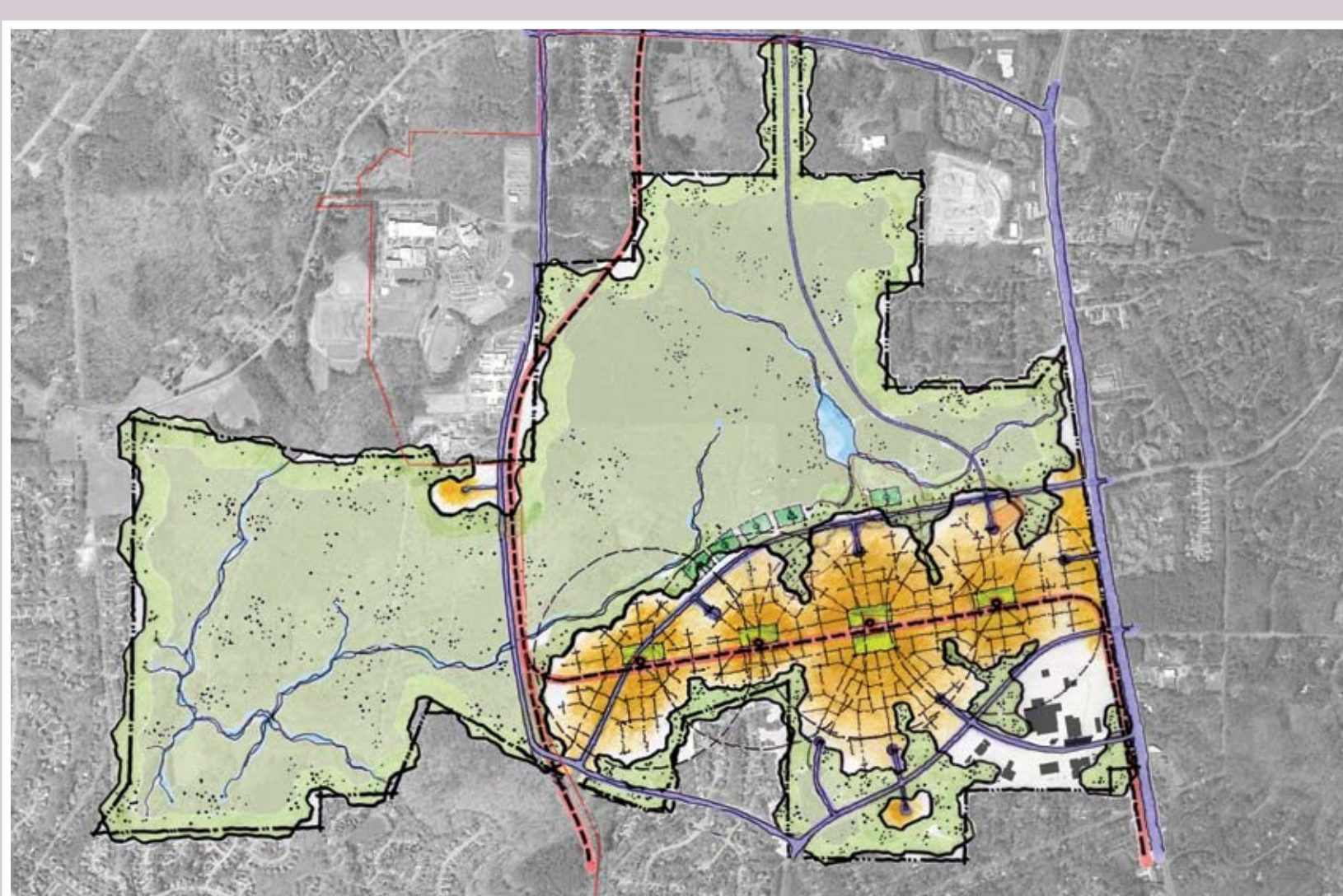


INTERWOVEN

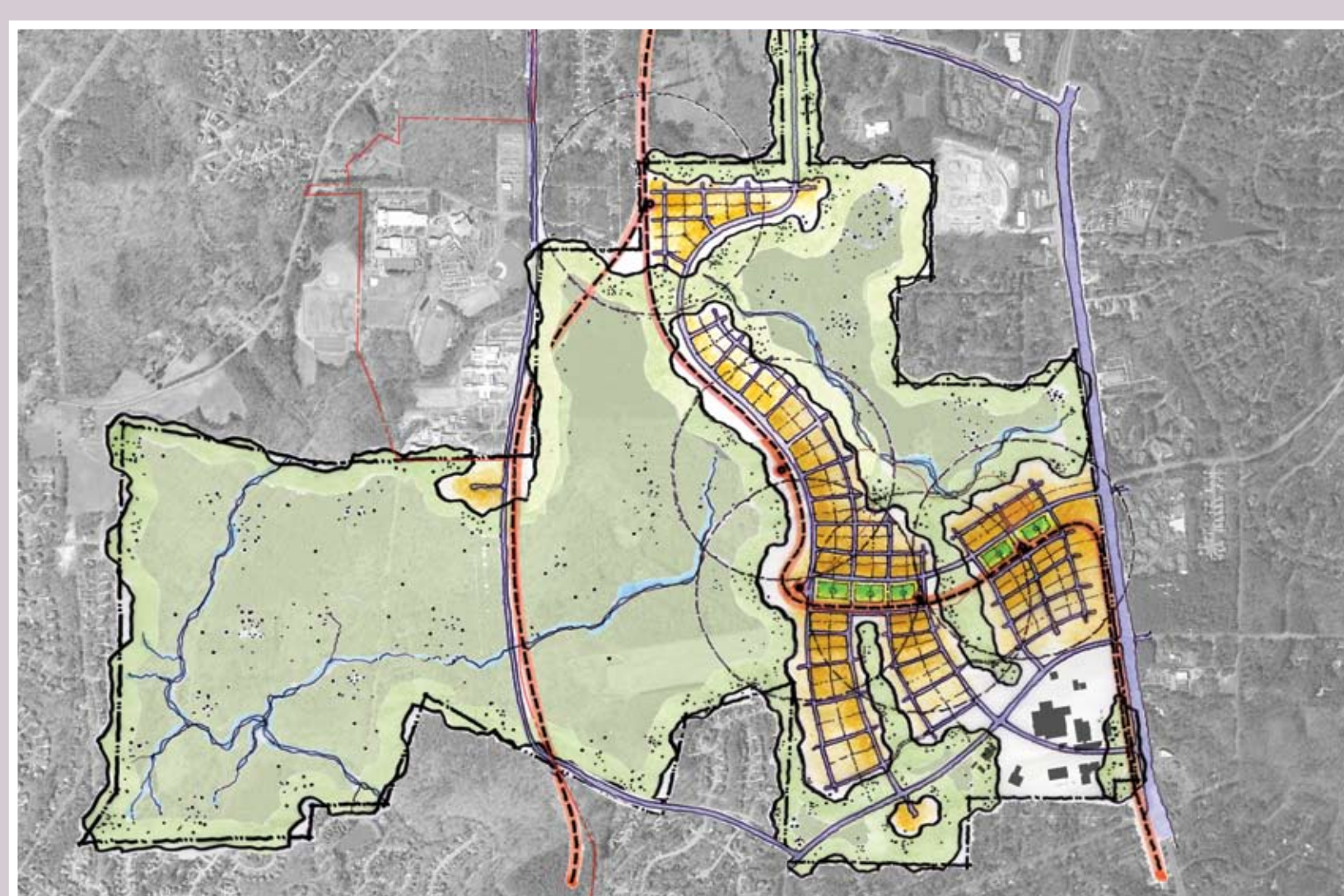
- Compact development integrated with large open or natural areas
- Development is concentrated in the Crow Branch watershed; integrated restoration strategy
- Transit through the center of the development; street shared with cars
- Reservoirs of parking spaced through development
- Transit corridor and north-south road west of Crow Branch
- Land use both separated and connected by habitat areas
- Majority of development is within 1,000 ft of transit corridor

discovery,
innovation
and learning

CENTERS



INTERWOVEN



GRID

