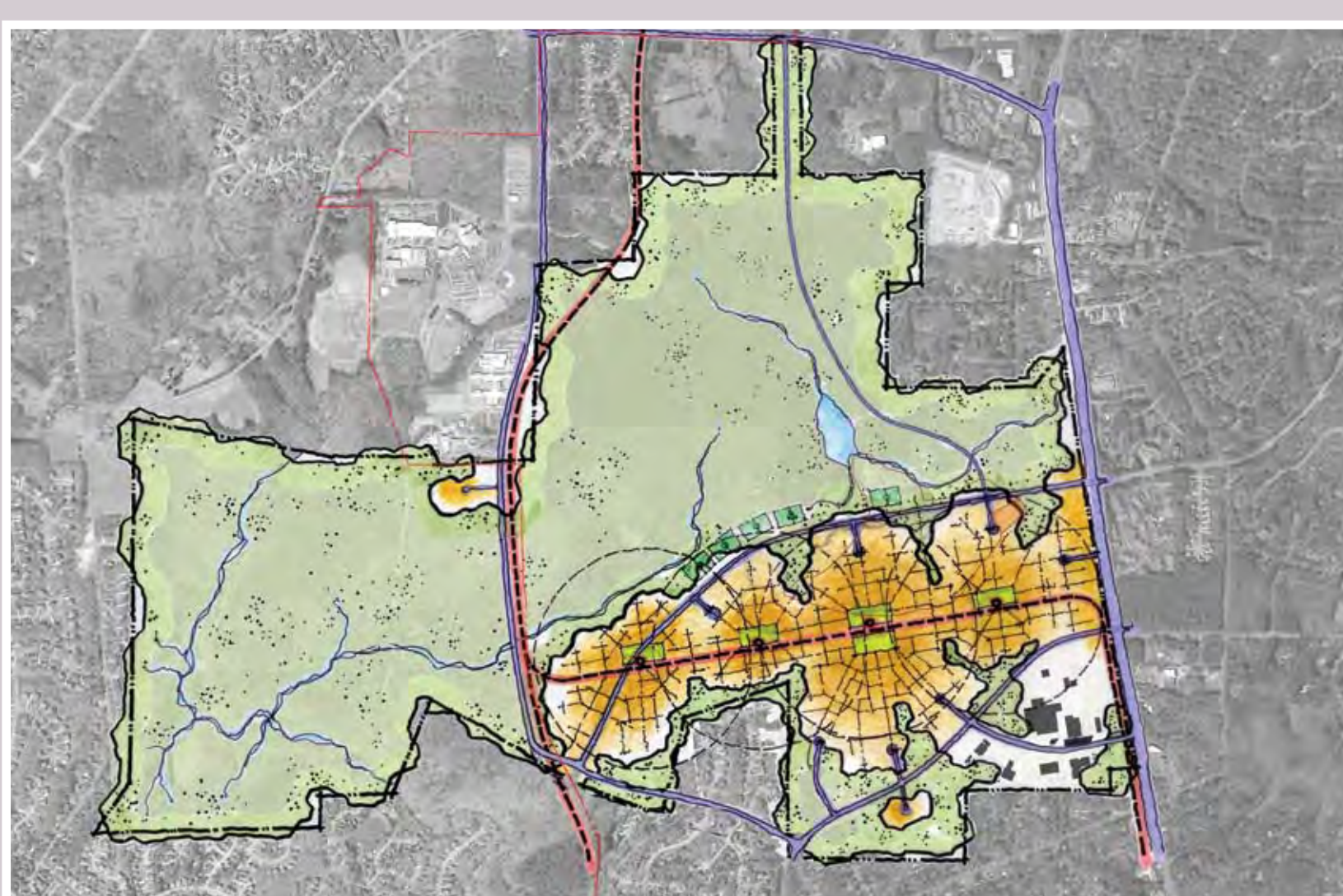


GRID

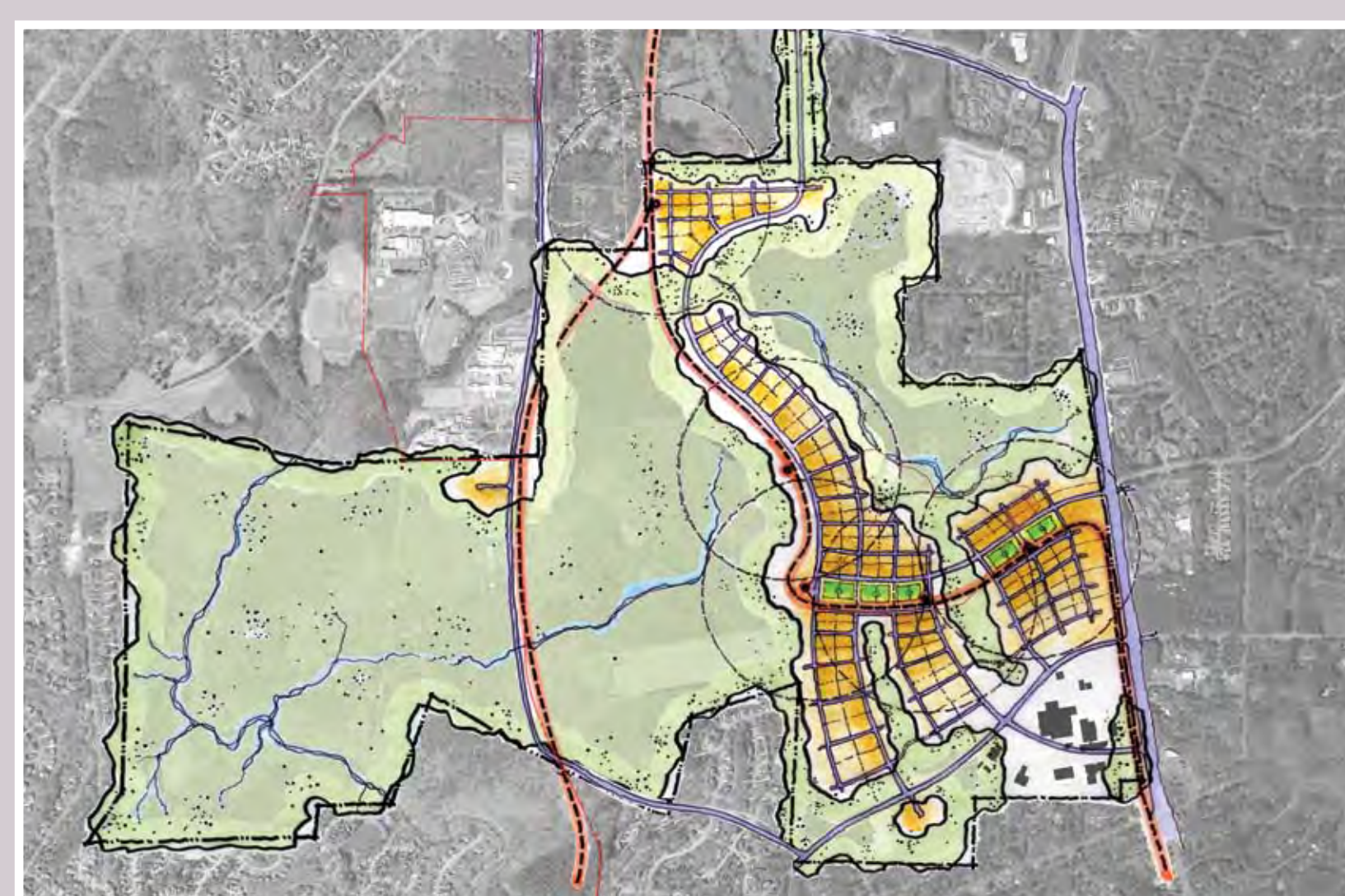
- Dense, compact development on regular blocks
- Large open area
- Transit through the center of the development; street shared with cars
- Integrated parking on most blocks
- Mixed-use within buildings and within blocks
- North-south road connection east of Crow Branch
- Majority of development is within 1,000 ft of transit corridor

discovery,
innovation
and learning

CENTERS



INTERWOVEN



GRID

