



Community Meeting

April 26, 2007

PLENARY

# CAROLINA NORTH



THE UNIVERSITY  
*of* NORTH CAROLINA  
*at* CHAPEL HILL



# CAROLINA NORTH



- Introduction to today's session
  - Jack Evans, UNC Carolina North
- Today's speakers
  - Mark Crowell, UNC Research & Economic Development
  - Sam Odom, Director of Frank Porter Graham
  - Ted Brown, Biohabitats
  - Anna Wu, UNC Director of Facilities Planning
  - Luanne Greene, Ayers/Saint/Gross
  - Karla Aghajanian, Ayers/Saint/Gross



## Why Carolina North?

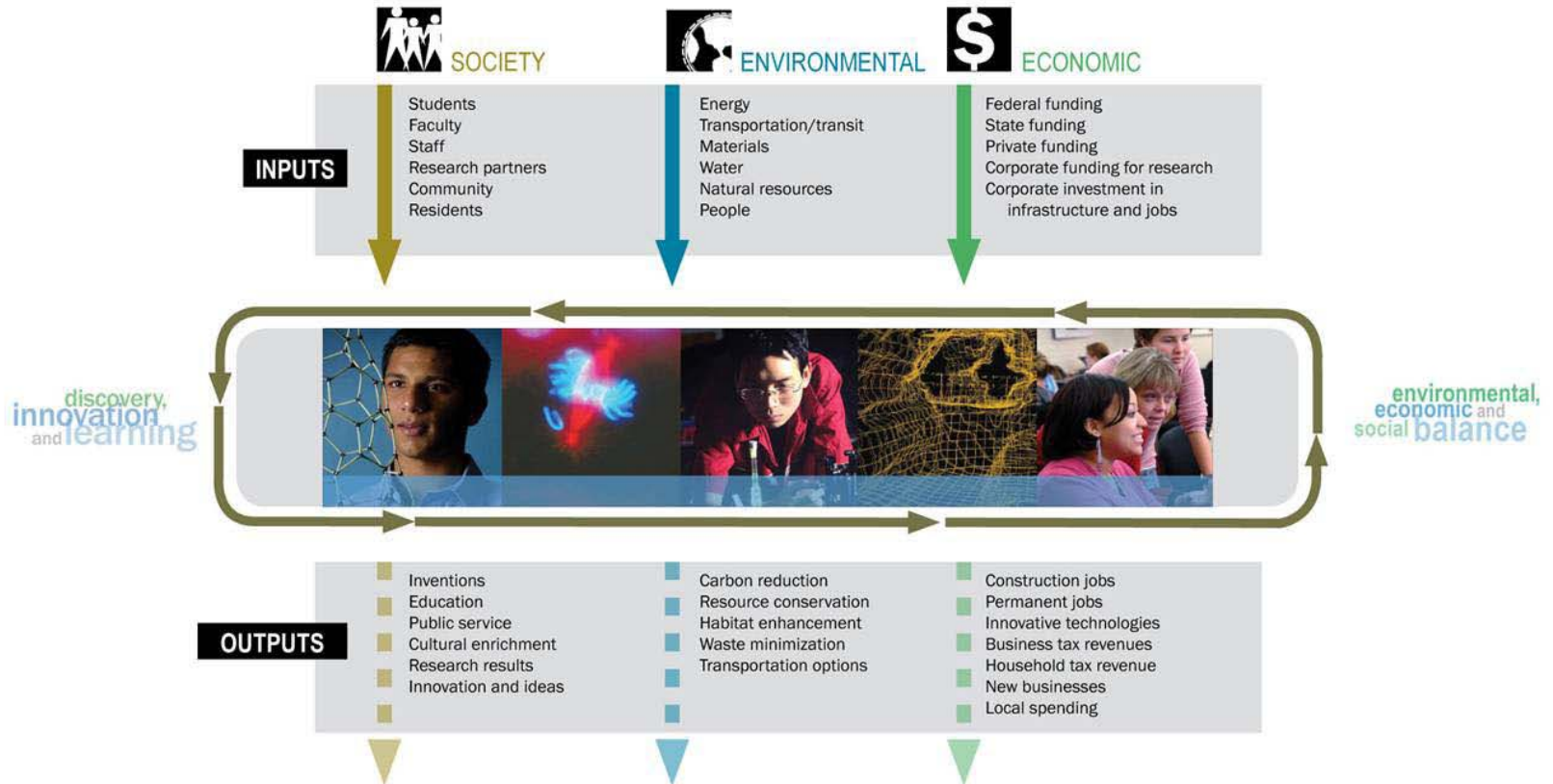
- Carolina North will support the mission of the University.
  - Carolina North will be a vibrant, compact, academic, mixed-use community.
  - Designs will support a sustainable, high-performance campus.
  - Designs will reflect analysis, workshops, and feedback.
- University programs
  - Research and innovation
  - Public/private partnerships
  - Housing
  - Recreation
  - Patient care
  - Cultural
  - Service retail
  - Transit center
  - Conference center



# CAROLINA NORTH



## Carolina North - Life of Campus

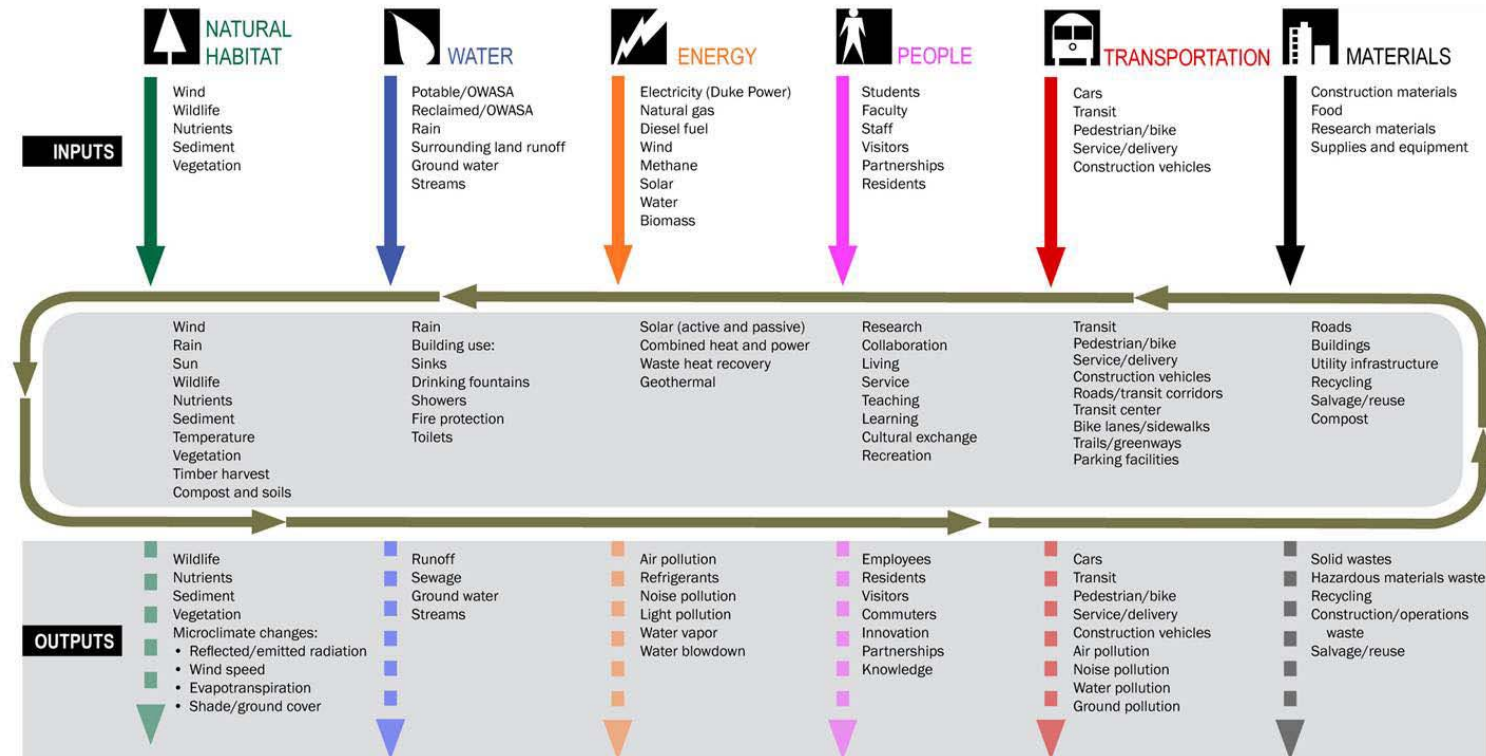




# CAROLINA NORTH

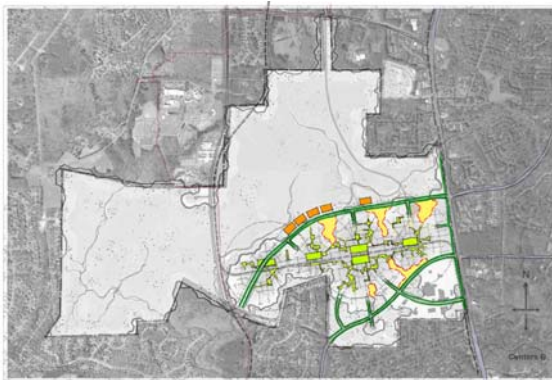


## Carolina North - Life of Campus Environmental Flow

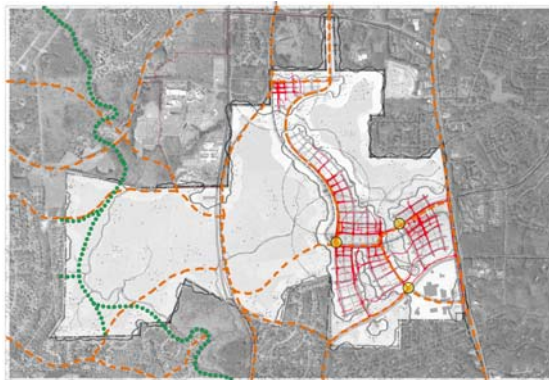




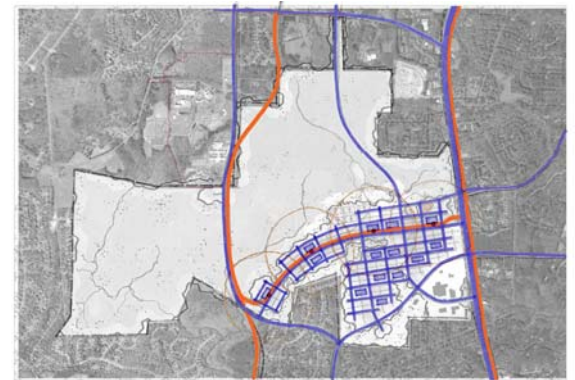
## Exploring Concepts for Carolina North



Centers (Open Space Overlay)

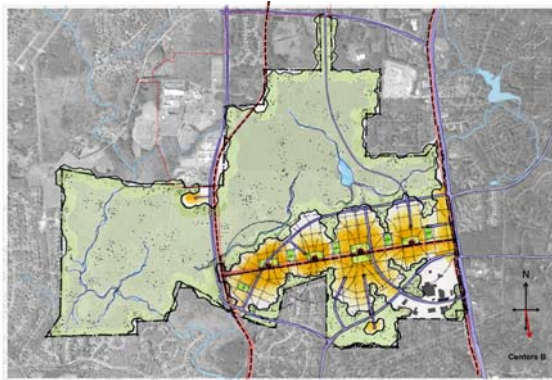


Interwoven (Ped/Bike Overlay)

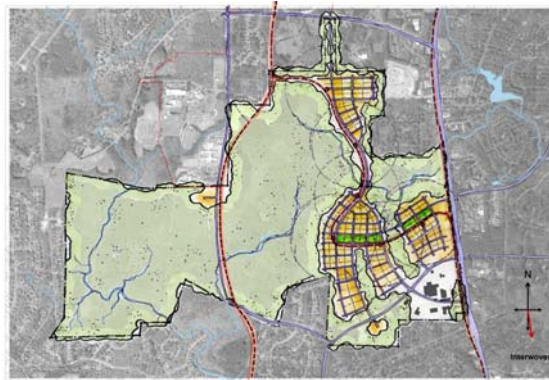


Grid (Transportation Overlay)

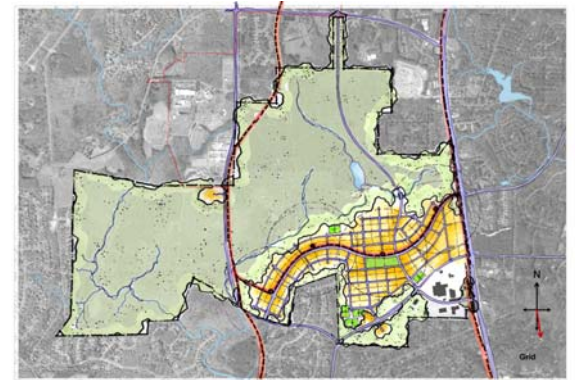
## Responding to Comments



Modified Centers



Modified Interwoven



Modified Grid