



**Triangle Land Conservancy
Conservation Area Monitoring Report
Carolina North**

Property Name: Bolin Creek West Conservation Area **Date of visit:** 2.18.13, 2.18.13,
3.13.13, and 6.10.13

County: Orange

Property Type: Restrictive Covenants

Local Contact: **Triangle Land Conservancy** **919-908-8809 (office)**
 514 S. Duke St. **919-755-9356 (fax)**
 Durham, NC 27701

Lead conservation area monitor: Bo Howes

Other person(s) attending inspection: None

The Carolina North Property is subject to a Declaration of Restrictive Covenants recorded in Book 5541 page 360 of the Office of the Orange County Register of Deeds. A copy of the Restrictive Covenants may be found at the Register of Deeds office or the link below.

<http://go.unc.edu/Rz8t3>

There is a LAND STEWARDSHIP POLICY on file for this property. The Land Stewardship Policy was completed January 15, 2013 and is available at the link below.

<http://go.unc.edu/Ed2t4>

Problem areas noted from prior visits and areas to pay special attention to:

First Monitoring Visit

Are property boundaries clearly marked? Note any new concerns about boundaries and signs of encroachment, and if existing problems have been corrected?

Yes. Boundaries clearly marked. No areas of concern.

The Restrictive Covenants list eight restricted or prohibited uses and activities. Are there any violations of the following restricted or prohibited uses and activities?

A. Construction. Construction or placement of buildings, roads, billboards or other advertising, utilities or other structures on or above the ground is prohibited in the Conservation Areas. Construction or placement of signs is prohibited in the Conservation Areas except for directional and boundary signs, interpretive signs describing the conservation values of the Conservation Areas, and signs and kiosks prescribing rules and regulations for the use of the Conservation Areas. **No new construction was observed.**

B. Dumping and Landfill Activities. Dumping or placing soil or other substances or materials as landfill, or dumping or placing trash, waste or unsightly or offensive materials is prohibited in the Conservation Areas. **No dumping or landfill activities were observed.**

C. Vegetation Destruction. Removal or destruction of healthy native trees, shrubs or other vegetation is prohibited in the Conservation Areas, unless done as a component of an established forest management plan. **No vegetation destruction was observed.**

D. Excavation or Dredging. Excavation, dredging or removal of loam, peat, gravel, soil, rock or other mineral substance in such manner as to affect the surface is prohibited in the Conservation Areas. **No excavation or dredging was observed.**

E. Detrimental Surface Use. Surface use except for forest or outdoor recreational purposes or purposes permitting the land or water area to remain predominantly in its natural condition is prohibited in the Conservation Areas. **No detrimental surface use was observed.**

F. Activities Detrimental to Drainage; Flood Control, etc. Activities detrimental to drainage, flood control, water conservation, erosion control or soil conservation are prohibited in the Conservation Areas. **No activities detrimental to drainage, flood control or other listed items were observed.**

G. Other Detrimental Acts. Other acts or uses detrimental to the retention of land or water areas are prohibited in the Conservation Areas. **Based on our observation, the University has been a good steward of the Carolina North property, no detrimental acts were observed during our visits.**

H. Construction of New Trails and Greenways. Construction of new trails (except for potential greenways and paths that are located and approved pursuant to the terms of the

Development Agreement) is prohibited in the Conservation Areas. **No new trails or greenways were observed.**

Additional comments or observations

A small amount of debris (old toilet, yard waste, minor mechanical equipment) was noted on the far eastern boundary of the property. This boundary backs onto multiple adjoining landowners. The University is in constant contact with these landowners regarding items that have encroached onto the Bolin Creek West Conservation area.

One major encroachment is a playset entirely within the conservation area. The University has contacted the landowner about this encroachment and is taking all appropriate steps to have the playset removed.

Two areas of invasive species are noted in this conservation area. One of Autumn Olive bushes and one of Japanese Stilt grass. Both of these areas are known to the University and efforts to address these invasive species are underway. The University is not required to remove these species but rather encouraged to do so. This note is included only to help with identification of problematic areas.

To the best of your knowledge and observation, is the land owner complying with the restrictive covenants? YES

Steward's name: Bo Howes
Address: 514 S. Duke St.
Durham, NC 27701

Signature:
Phone:919-908-8809

Indicate attachments to the report. Date and sign all materials. Provide descriptions of photograph and illustration locations.

ground photos **aerial photos** **maps** **illustrations** **other**

Map

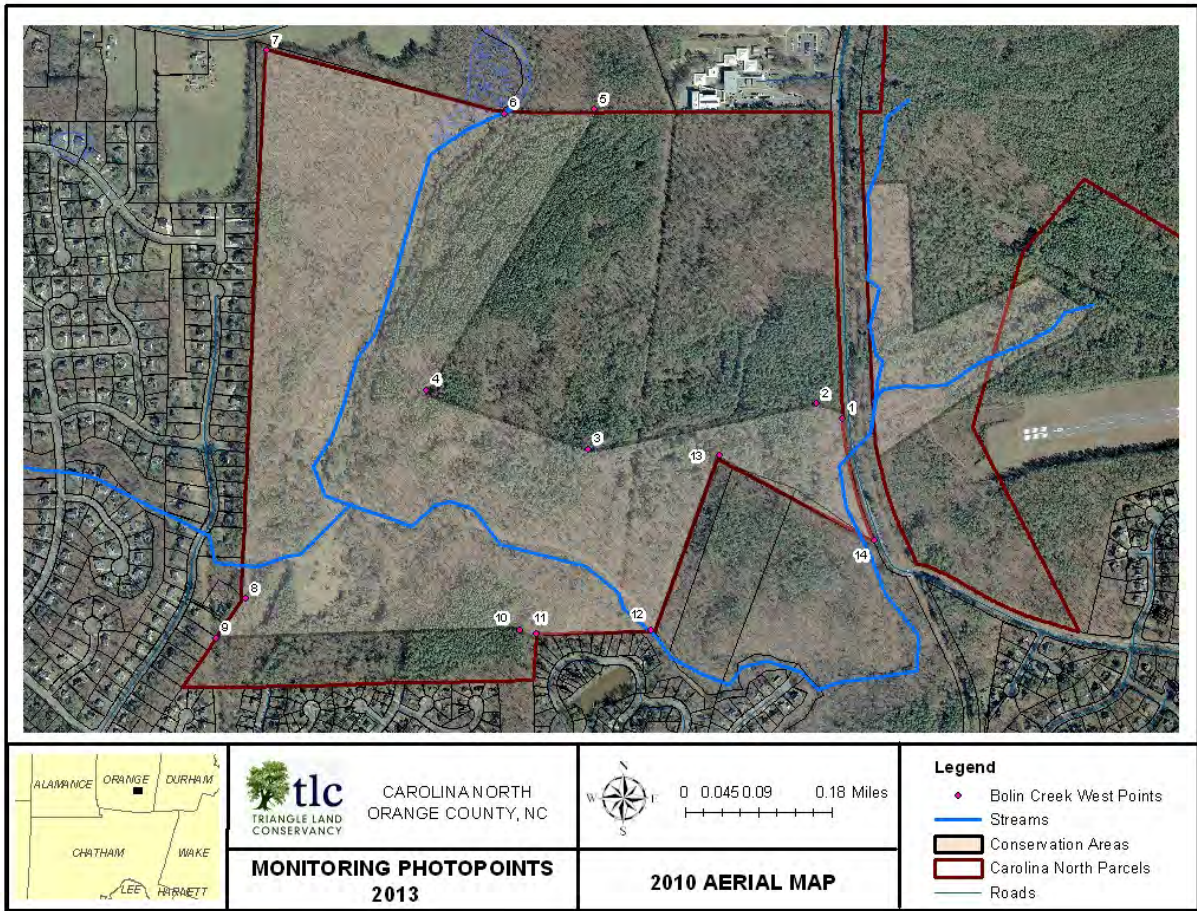


Photo Documentation Table

Photo Point	Photo Number	Description	Azimuth
-------------	--------------	-------------	---------

1	1	Northern Corner on Seawell School Road	200°
2	2	Internal Corner	290°
3	3	Internal Corner	290°
4	4	Internal Corner	110°
5	5	Northeast Corner	210°
6	6	Corner at intersection with Bolin Creek	60°
7	7	Northwest Corner	120°
8	8	Internal Corner	10°
9	9	Southwest Corner	110°
10	10	Internal Corner	20°
11	11	Internal Corner and Encroachment	60°
12	12	Southern Corner at intersection with Bolin Creek	40°
13	13	Internal Corner	220°
14	14	Southern Corner on Seawell School Road	250°

Photos



Photo #1 Northern corner on Seawell School Road facing SW



Photo #2 Internal Corner facing W



Photo #3 Internal Corner facing W



Photo #4 Internal Corner facing E



Photo #5 Northeast Corner facing SW



Photo #6 NE Corner at intersection with Bolin Creek facing NE



Photo #7 Northwest Corner facing SE



Photo #8 Internal Corner facing N



Photo #9 Southwest Corner facing E



Photo #10 Internal corner facing N



Photo #11 Internal Corner and Encroachment facing NE



Photo #12 Southern Corner at intersection with Bolin Creek facing NE



Photo #13 Internal Corner facing SW



Photo #14 Southern Corner on Seawell School Road facing W