



Community Meeting

March 27, 2007

CAROLINA NORTH



THE UNIVERSITY
of NORTH CAROLINA
at CHAPEL HILL



- Introduction to today's session & speakers

Dan Reed, *RENCI*

Robert Blouin, *School of Pharmacy*

Kathleen Gray, *Carolina Environmental Program*

Douglas Crawford-Brown, *Carolina Environmental Program*

Anna Wu, *UNC Chapel Hill Facilities Planning*

Luanne Greene, *Ayers/Saint/Gross*

Karla Aghajanian, *Ayers/Saint/Gross*



Why Carolina North?

- University programs
- Research and innovation
- Public/private partnerships
- Housing
- Recreation
- Patient care
- Cultural
- Service retail
- Transit center
- Conference center



Developing a Plan: *some common themes*

1. Carolina North will support the mission of the University
2. Carolina North will be a vibrant, compact, mixed-use community
3. Schematic designs will support a sustainable, high-performance campus
4. Schematic designs will reflect analysis and workshops
 - Ecological Assessment
 - LAC principles
 - Infrastructure workshops
 - Input from the community and consultants



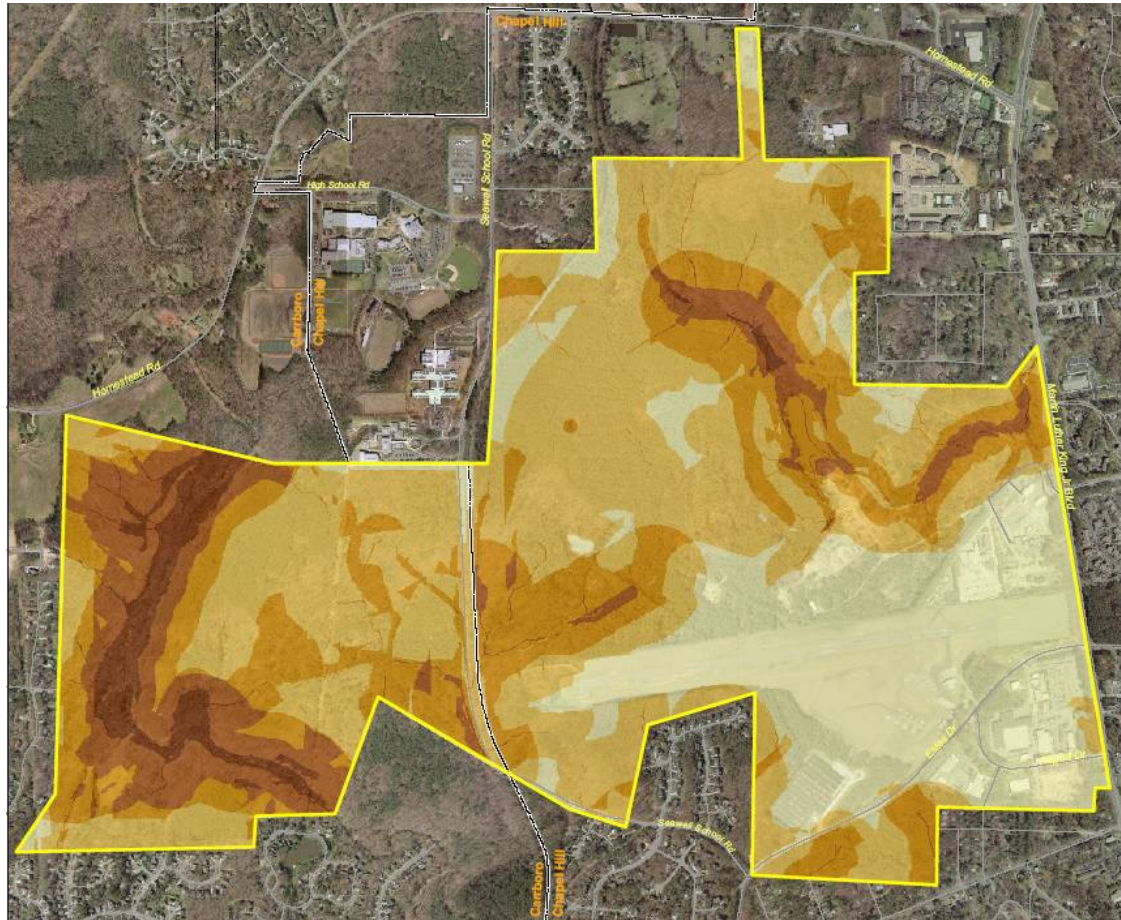
Developing a Plan: *some common themes*

5. Carolina North will have an integrated transportation system.
 - Transit (corridors defined)
 - Park 'n' ride (off-site parking)
 - On-site parking
6. Schematic designs show a variety of open space types
7. Schematic designs show a hierarchy of streets and service zones
8. Schematic designs anticipate a variety of building heights
 - Lower at neighborhood edges, higher in center



Developing a Plan: *ecological assessment*

- Streams
- Wetlands
- Groundwater
- Geomorphology
- Vegetation
- Landscape Morphology
- Wildlife Habitat
- Culture and History



Draft Ecological Assessment Composite Metric – Suitability Analysis
Biohabitats, Inc., March 2007

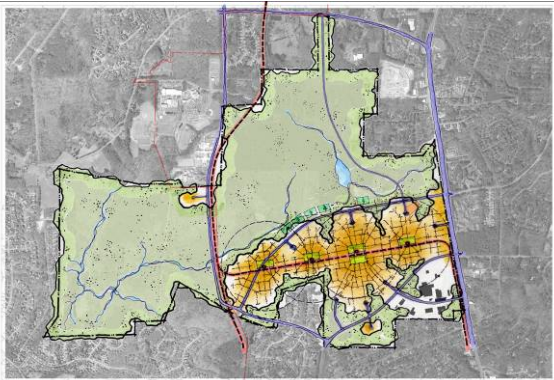


Developing a Plan: *a work in progress*

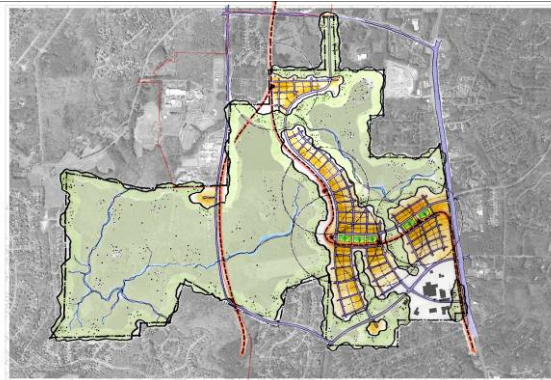
- Energy supply, facilities and plants
- Utility corridors and infrastructure
- Ecological management plan
- On-site greenways & trails
- Housing strategy
- Phasing plans
- Financial models
- Transit study



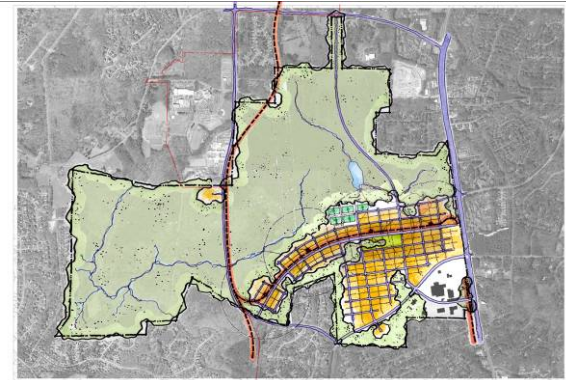
Exploring Concepts for Carolina North



Centers



Interwoven



Grid

- Where is development situated?
- How are uses mixed?
- Where is the transit corridor?
- What is the road network?
- What are the parking strategies?