



THE UNIVERSITY
of NORTH CAROLINA
at CHAPEL HILL

2011 - 2012 Development Schedule

October 26, 2011

2011 – 2012 Development Schedule

Research Building and Infrastructure

Conservation Areas

Ductbank (Electrical Infrastructure Additions)

Carolina North Greenway

Landfill Gas Pipeline and Generator



Projected Development: First 800,000 square feet

Research Building One	225,000 sf
Small Central Utility Plant	5,000 sf
Law School	250,000 sf
Research Building Two	120,000 sf
Housing	200,000 sf

- Existing Buildings
- Carolina North
- Development Agreement Boundary
- Proposed Buildings
- Proposed Roads
- Proposed Open Space
- Proposed Fields
- Paved Parking
- Buildings - first 800,000 sq. ft.
- Sidewalk Improvements
- Bike Lane Improvements
- Realigned Airport Dr.
- Traffic Signal Improvements
- Utility Corridor
- Greenway
- Bus Shelter
- Railroad
- Streams
- Open Water



THE UNIVERSITY
of NORTH CAROLINA
at CHAPEL HILL






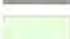
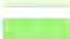
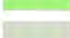



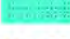



2011-2012 Development Schedule: Research Building & Infrastructure

Infrastructure

Design commenced in June 2011

Research Building

Design commenced in October 2011

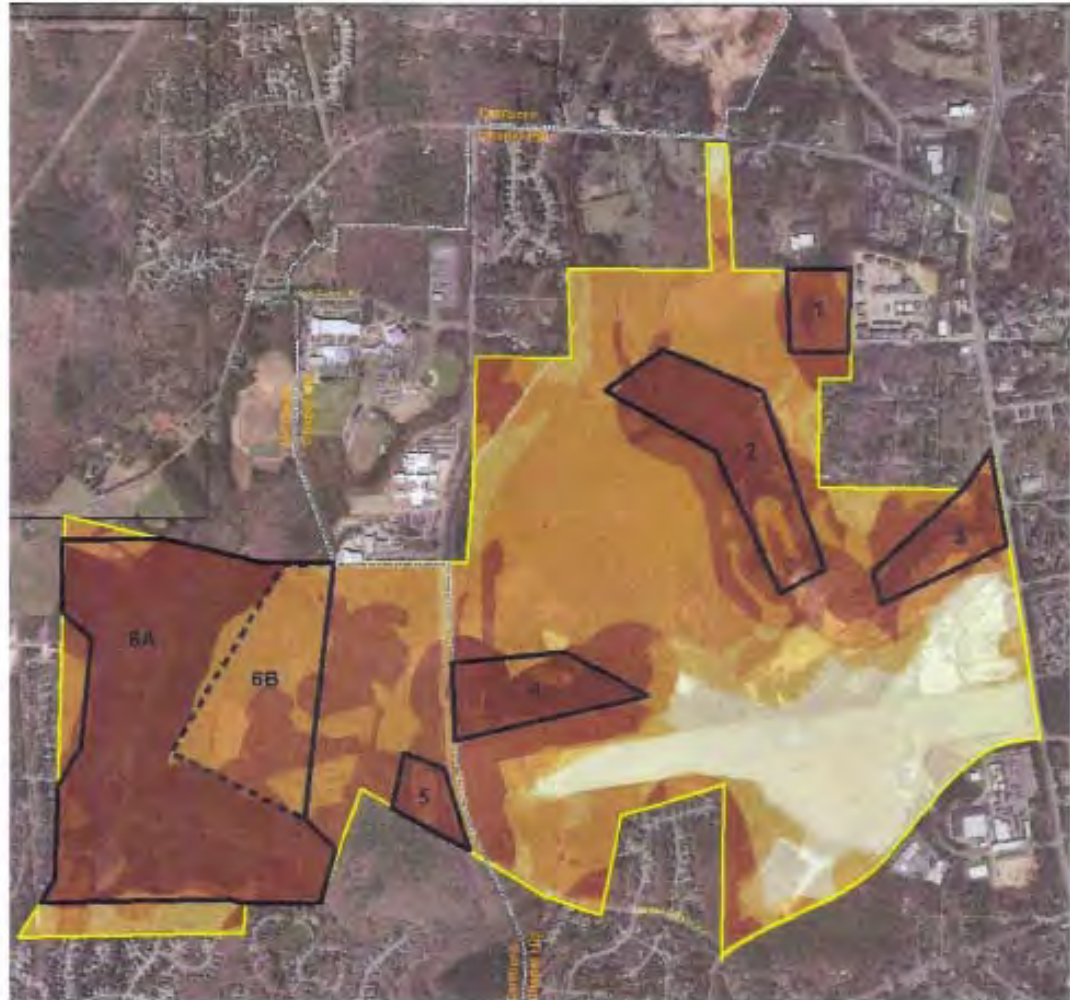
-  Carolina North
-  Development Agreement Boundary
-  Research Building Site
-  Proposed Roads
-  Proposed Road - Research Building
-  Proposed Open Space
-  Open Space - Research Building
-  Proposed Fields
-  Paved Parking
-  Sidewalk Improvements
-  Bike Lane Improvements
-  Realigned Airport Dr.
-  Traffic Signal Improvements
-  Bus Shelter
-  Utility Corridor



THE UNIVERSITY
of NORTH CAROLINA
at CHAPEL HILL

2011-2012 Development Schedule: Conservation Areas

EXHIBIT E. Map: Conservation Areas

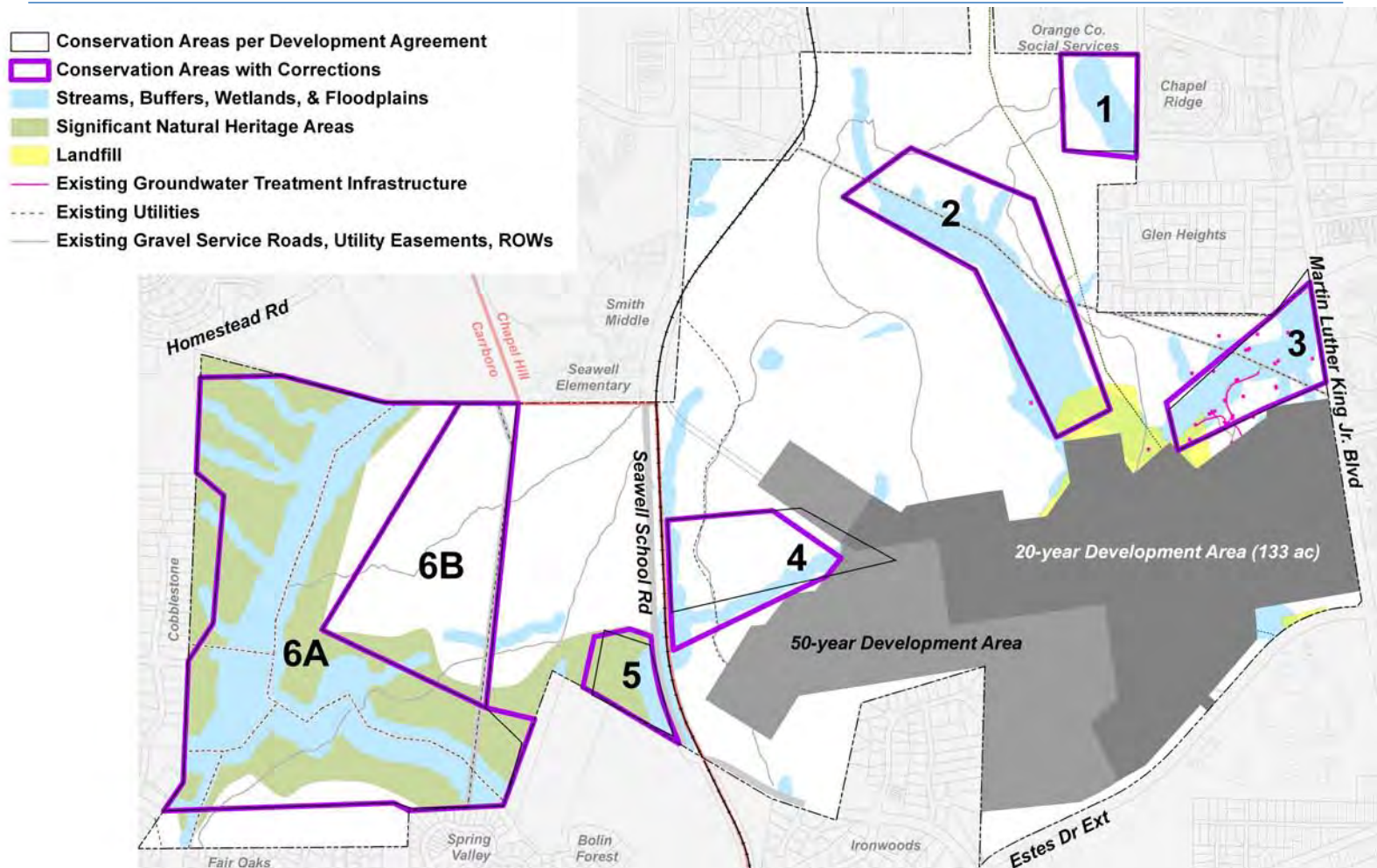


Note: Composite Map – Weighted Analysis from Ecological Assessment, with smoothed boundaries and upland hardwood borders

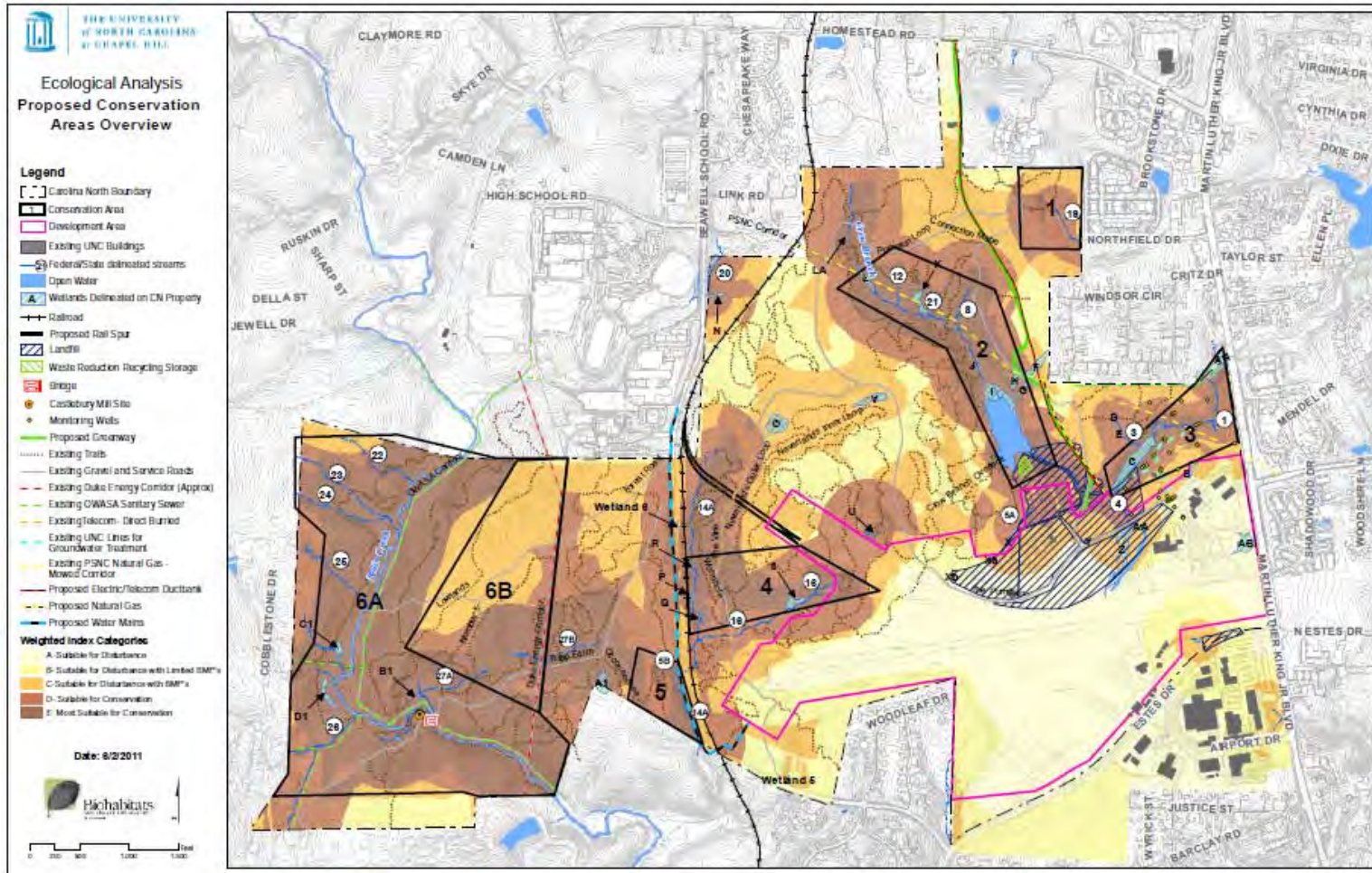


THE UNIVERSITY
of NORTH CAROLINA
at CHAPEL HILL

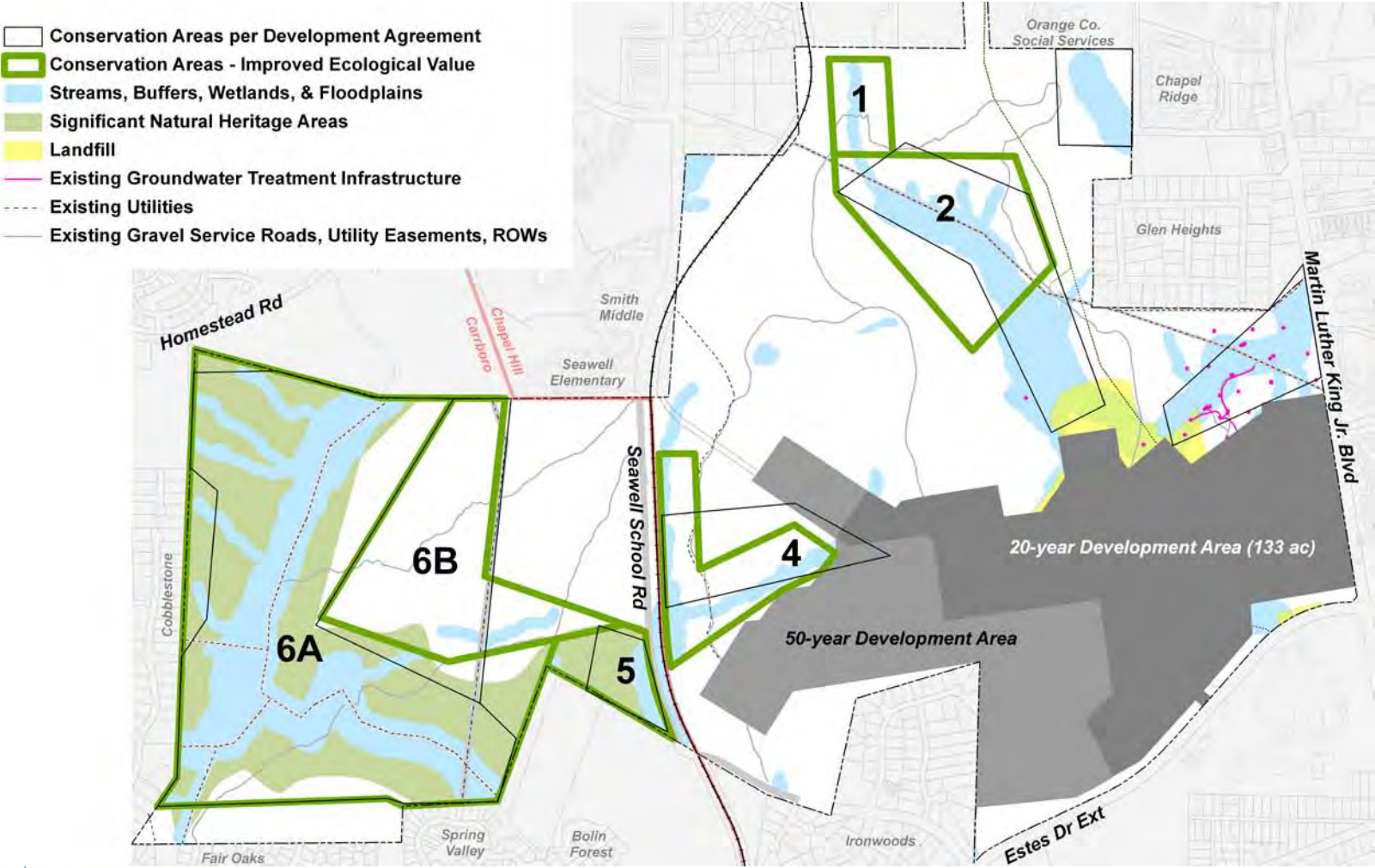
Conservation Areas: Development Agreement Plan with Corrections



Carolina North Conservation Areas Report: Overview Map



Conservation Areas: Improved Ecological Value



Conservation Areas

- Use restrictive covenants as mechanism
- Third-party monitoring
- Protection identical to what is in Development Agreement
- Conservation area total remains 311 acres

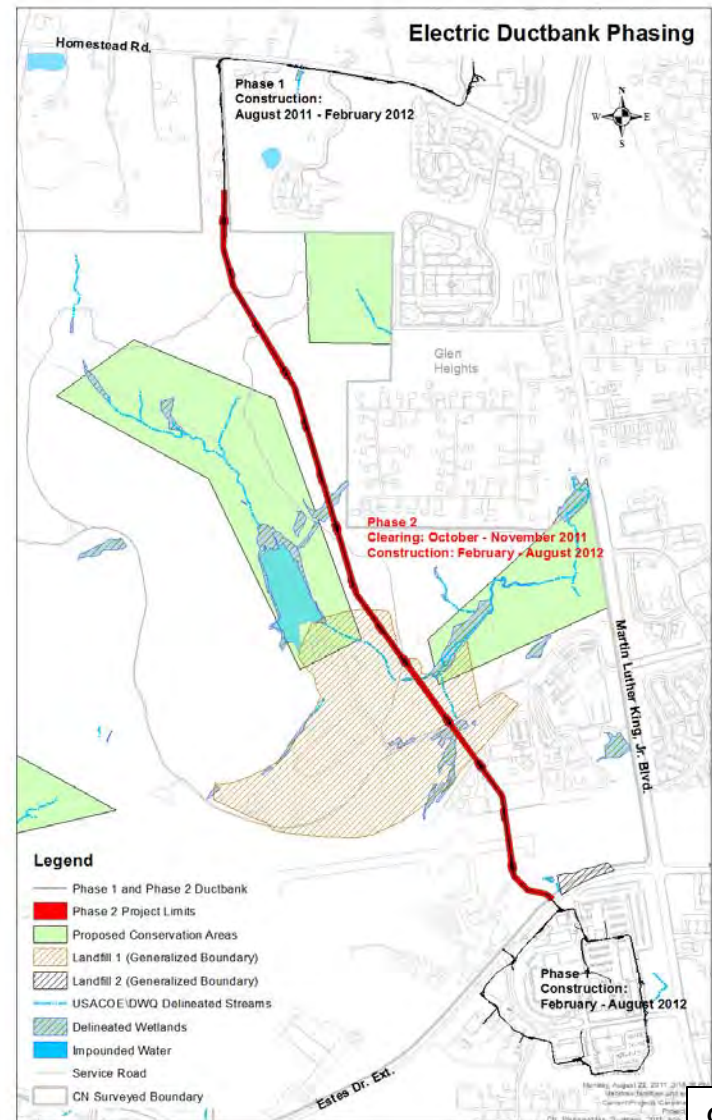


2011-2012 Development Schedule: Ductbank (Electrical Infrastructure Additions)

Ductbank (Electrical Infrastructure Additions) Construction

The ductbank will provide more reliable power to Giles Horney Building Complex and Administrative Office Building.

Nationwide permit received from Army Corps of Engineers	July 2011
Phase One construction	Aug 2011-Aug 2012
Phase Two early site clearing	Oct - Nov 2011
Phase Two construction	Feb 2012 -Aug 2012



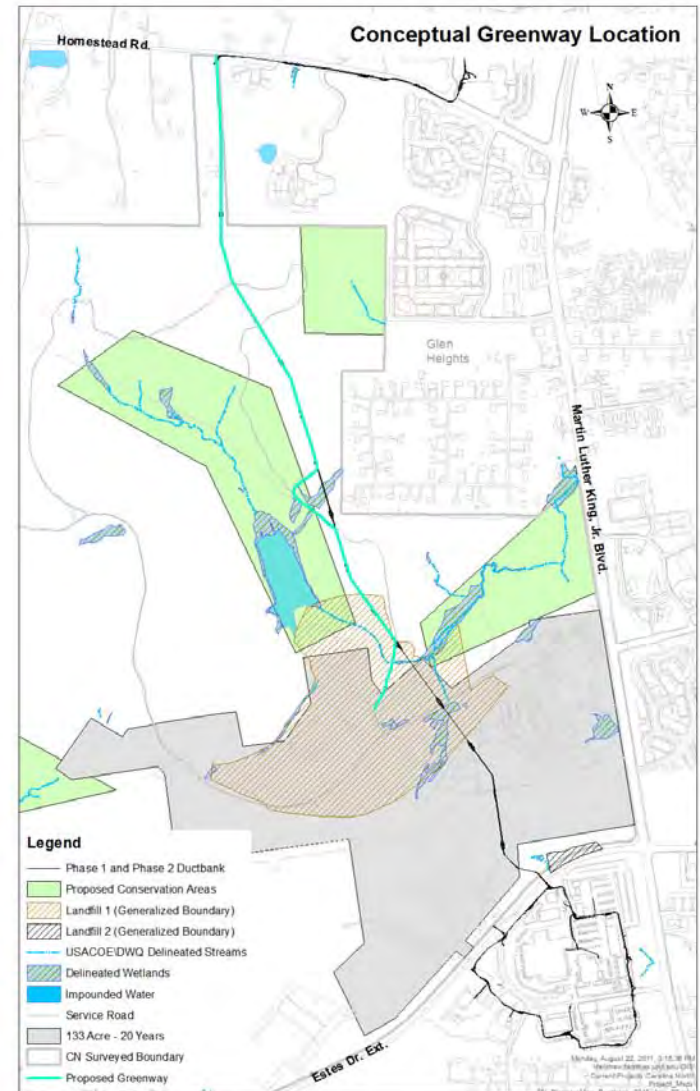
THE UNIVERSITY
of NORTH CAROLINA
at CHAPEL HILL

2011-2012 Development Schedule: Carolina North Greenway

Carolina North Greenway

A paved greenway from Homestead Road to Municipal Drive, co-located with the ductbank, will be built when ductbank construction is complete.

Greenway construction Fall 2012
(Homestead Rd. to Municipal Drive)



2011-2012 Development Schedule: Landfill Gas Project

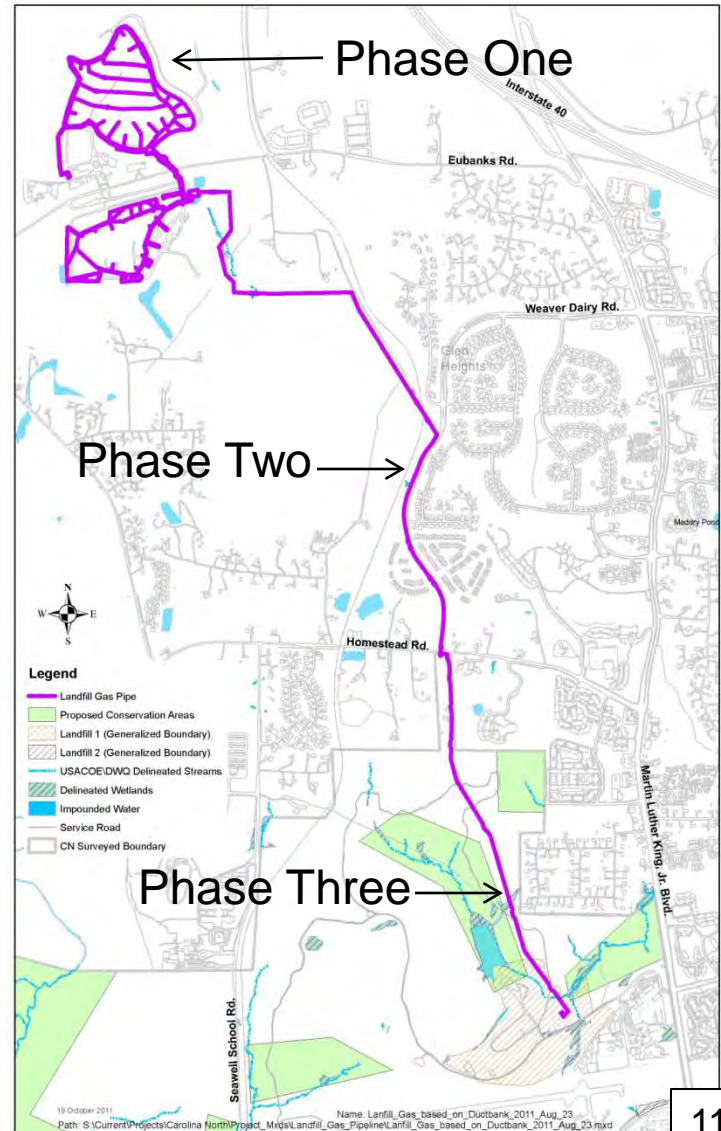
Landfill Gas Pipe Construction Phasing

The pipe brings methane gas from the landfill on Eubanks Road to a generator located on the site of the future Small Central Utility Plant at Carolina North. The electricity generated there will connect to the Duke Energy power grid at a point on Martin Luther King, Jr. Blvd. Eventually, heat will be recovered from the generator to be used to heat buildings at Carolina North.

Phase One: collection system at Eubanks Rd.
Sept. 2010 – Oct. 2011

Phase Two: pipe from Eubanks Rd. to Homestead Rd.
Jan – April 2012

Phase Three: pipe from Homestead Rd. to generator (with ductbank)
Feb 2012 – Aug 2012



Landfill Gas Generator Site at Carolina North



For further information

Carolina North:

<http://www.carolinanorth.unc.edu>

Capital Improvement Projects:

Landfill Gas Project

Electrical Infrastructure Additions (ductbank)

<http://www.fpc.unc.edu>

Project Permits:

<http://fpc.unc.edu/Projects/CurrentPermits.aspx>

Carolina North Forest Facebook Page:

<http://tinyurl.com/4484tgz>

