



Community Meeting

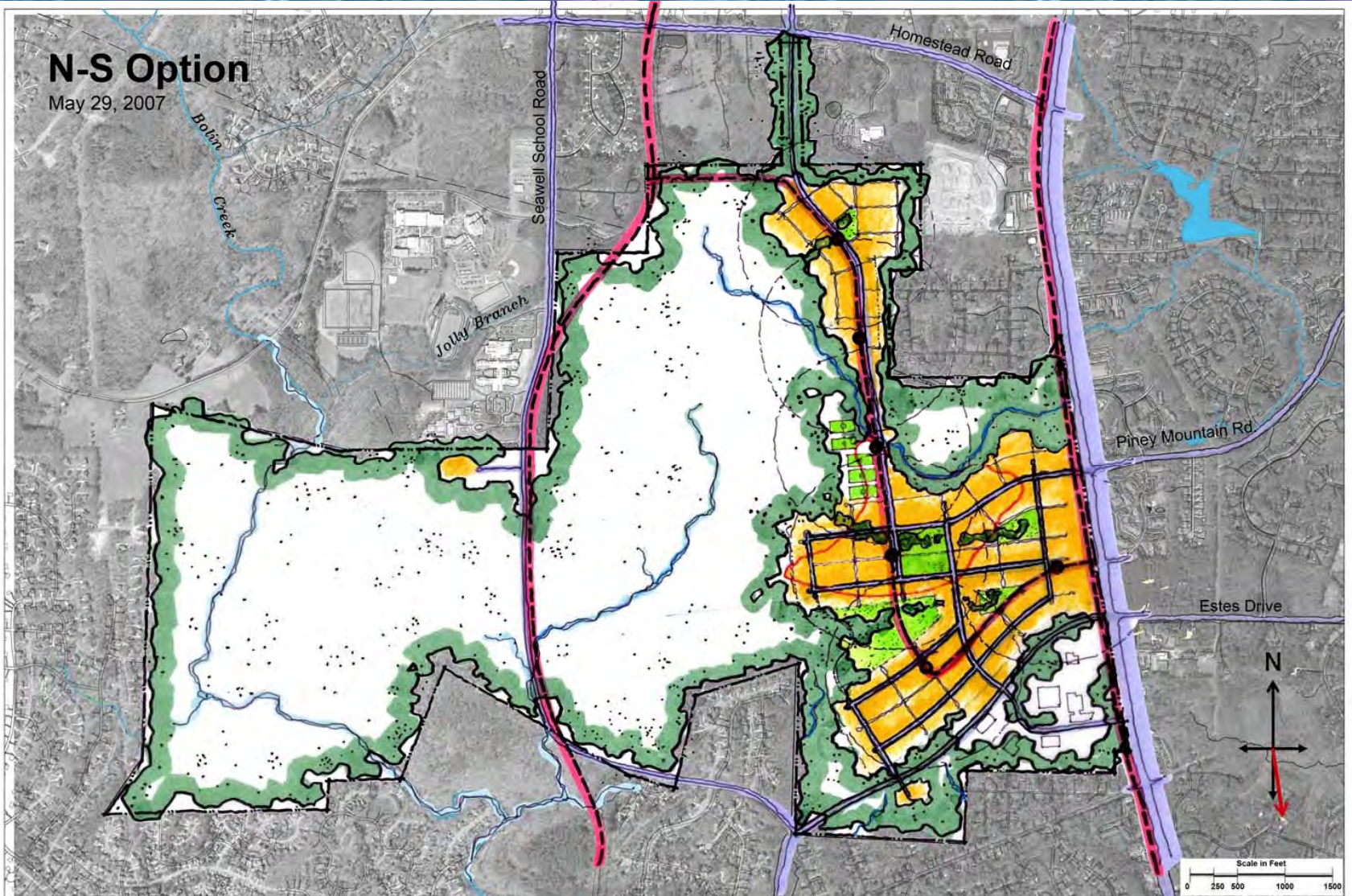
May 29, 2007

Breakout Session

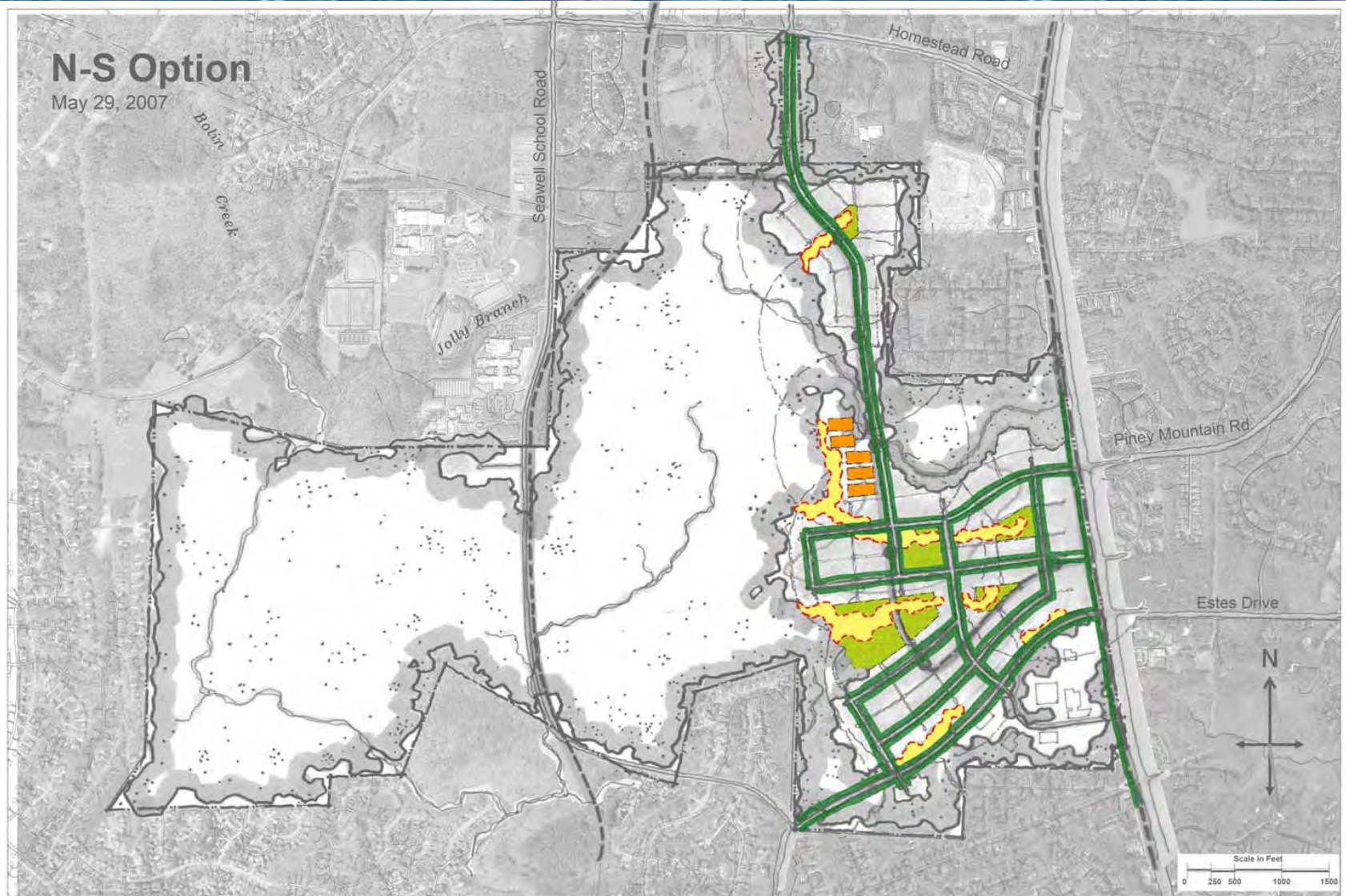
CAROLINA NORTH



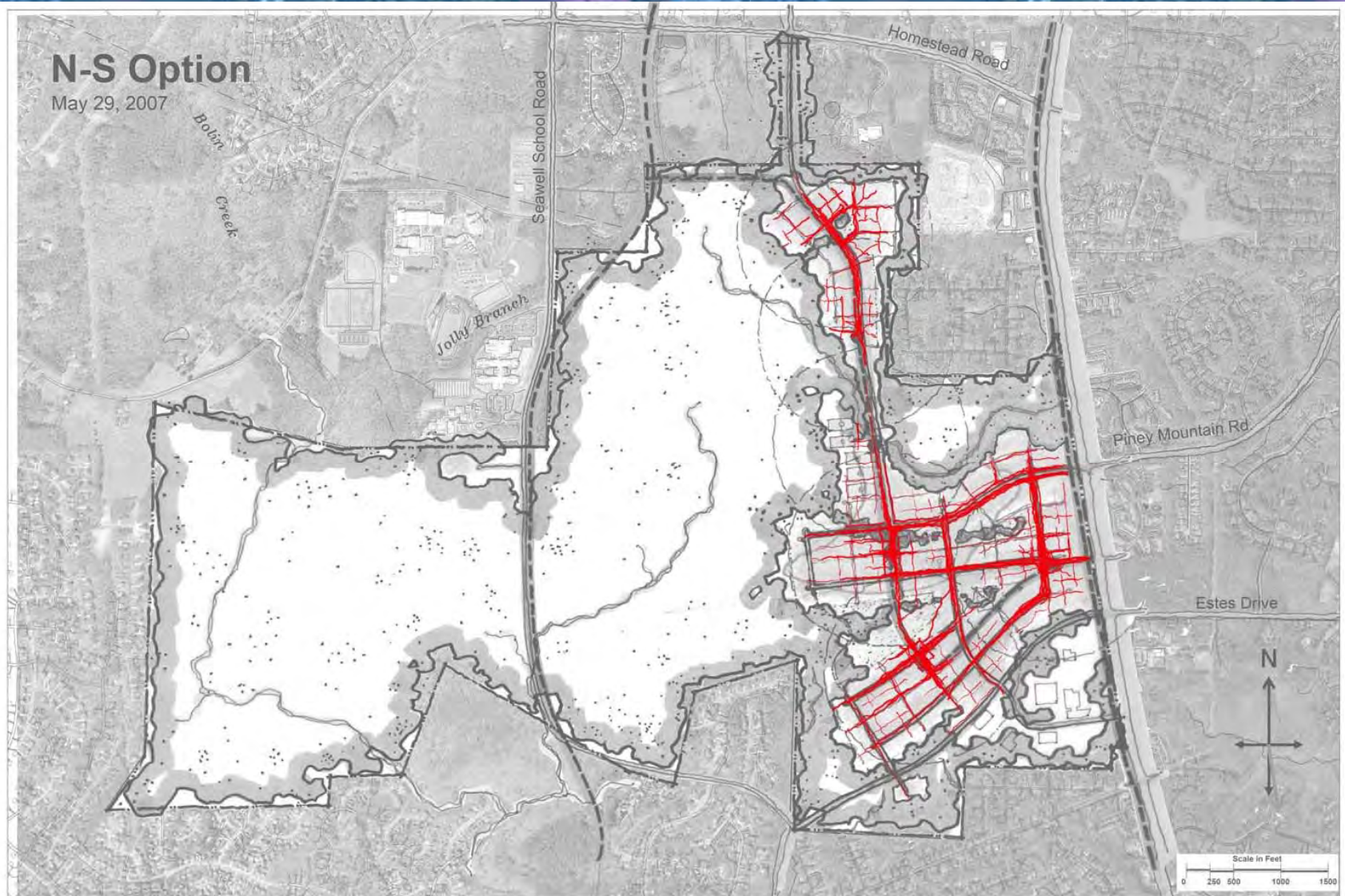
THE UNIVERSITY
of NORTH CAROLINA
at CHAPEL HILL



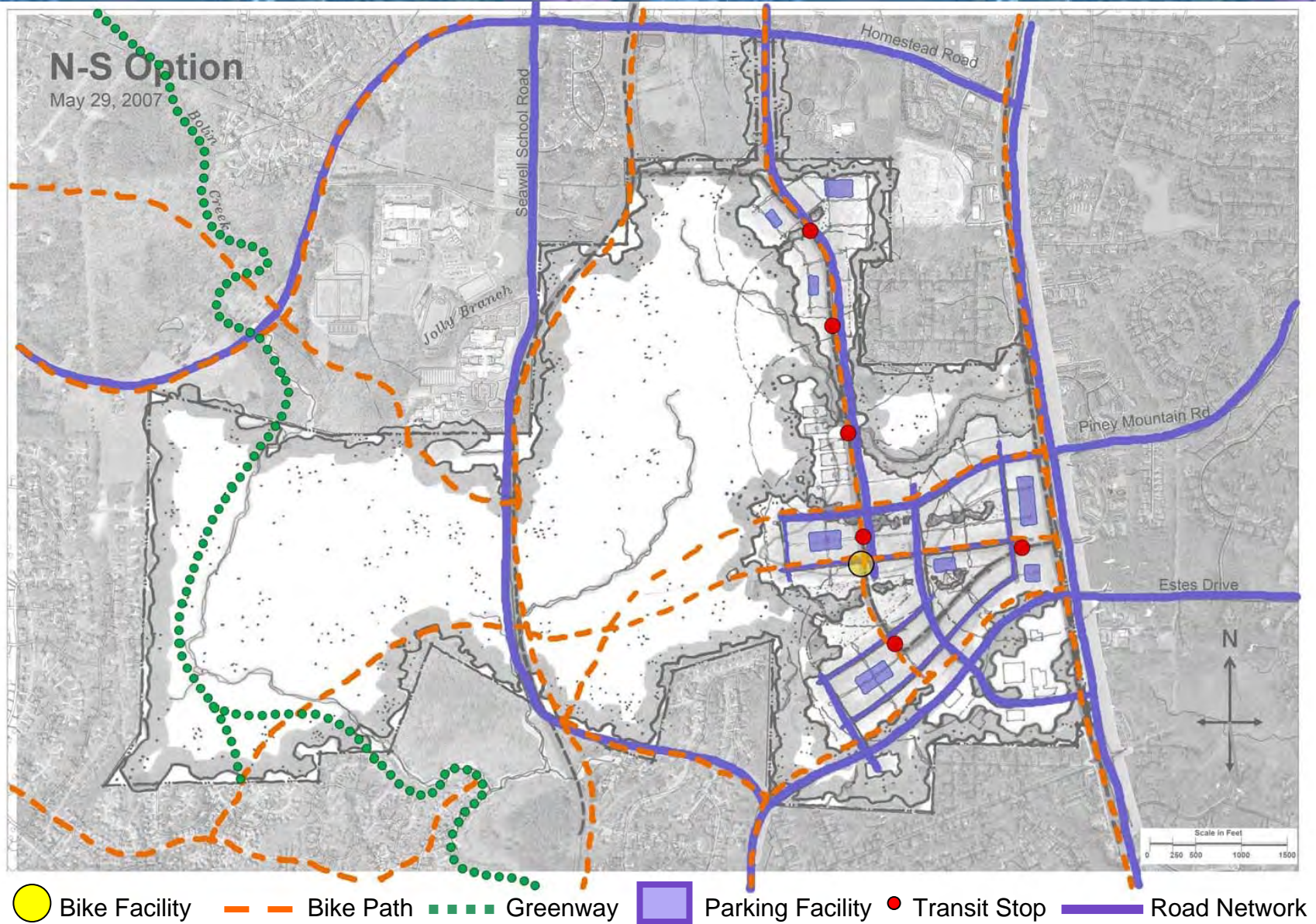
The North-South Option concentrates development to the East of the site and restores previously disturbed land at the airport.

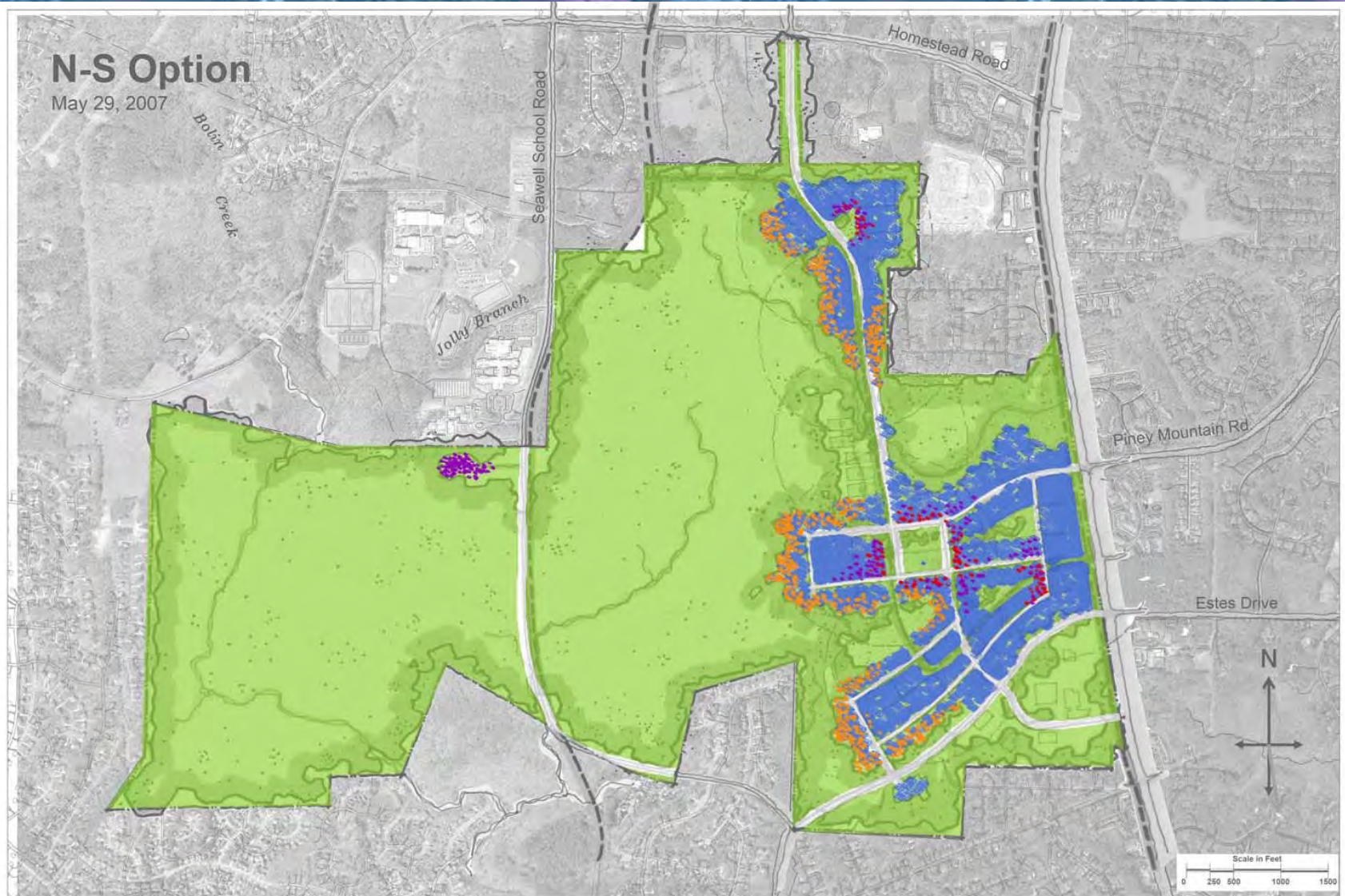


 Working Landscape  Streetscape  Greens and Parks  Recreation Fields

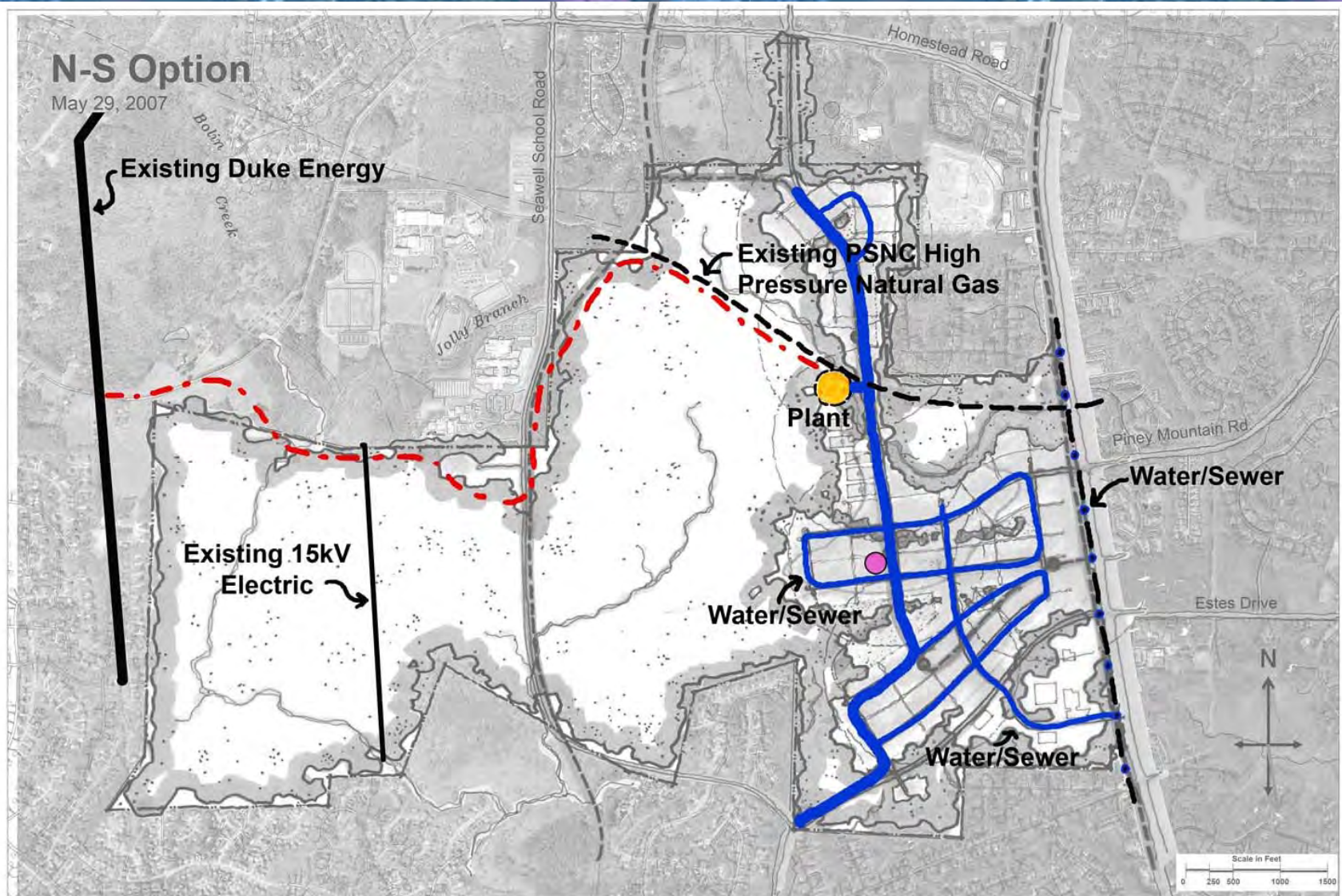


 Pedestrian Circulation Network

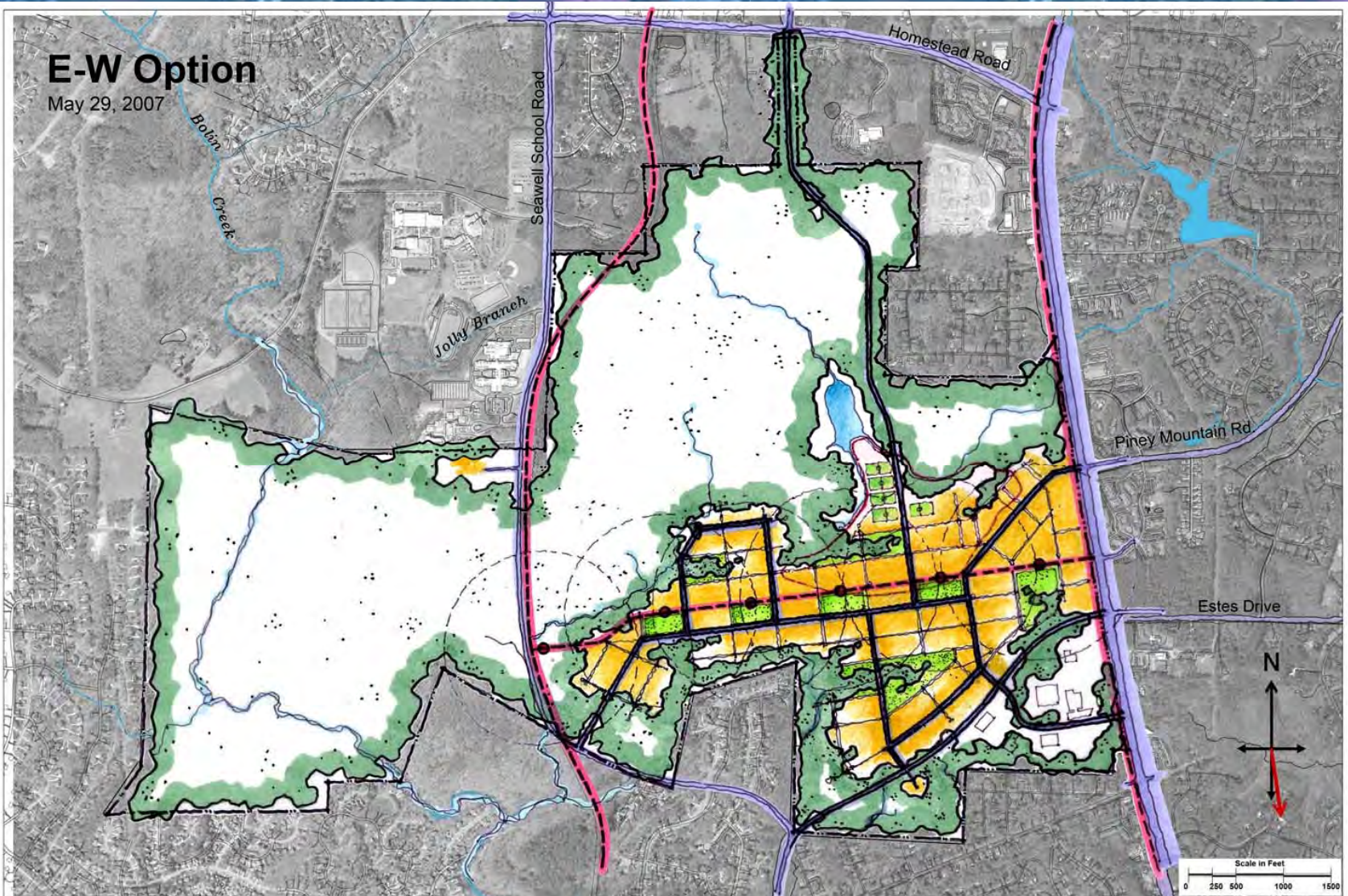




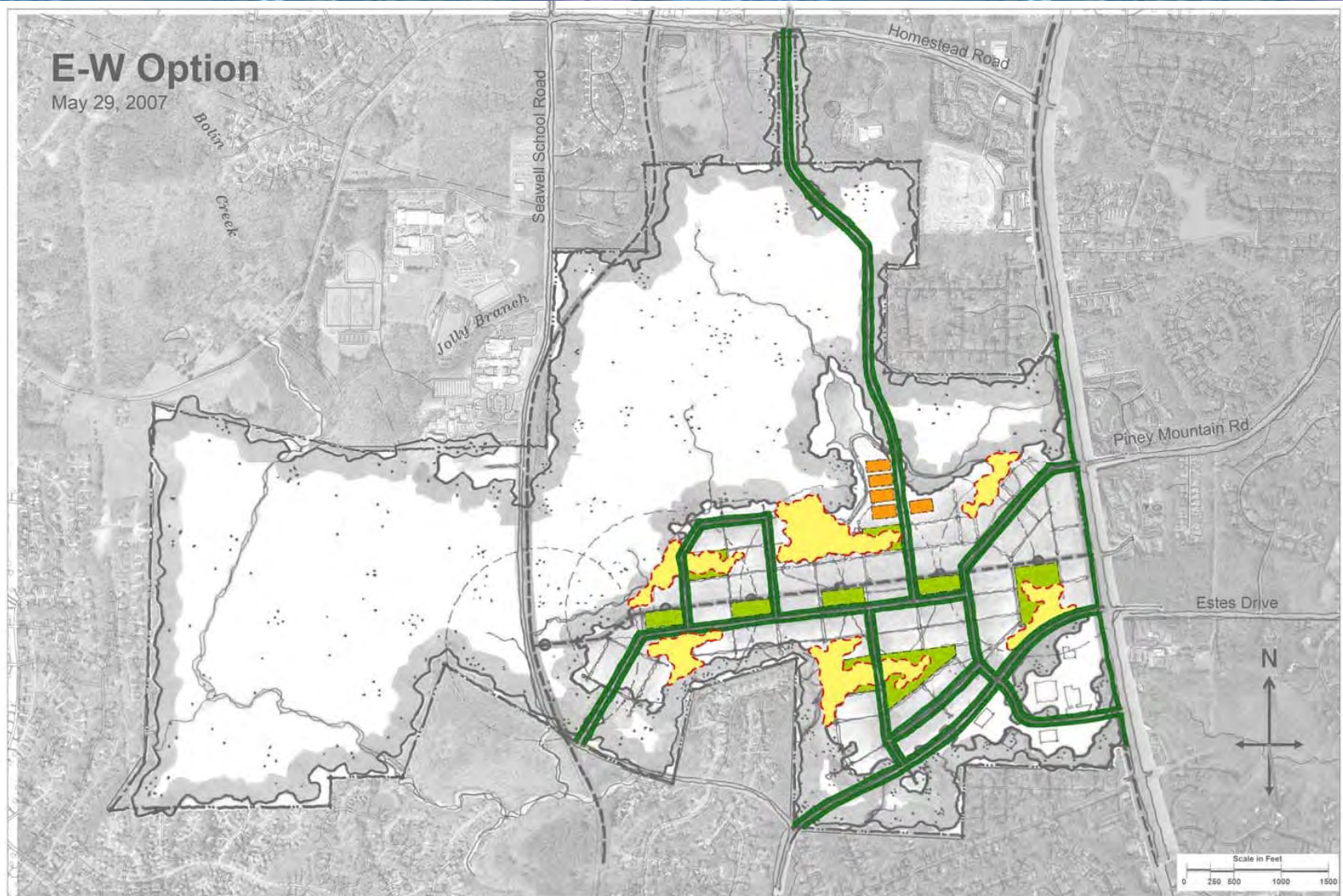
Research/Institutional Civic Retail/Mixed Open Space Residential



● Central Plant ● Early Phase Plant - - - Electric Duct Bank



The East-West Option locates development on previously disturbed land at the airport.



Working Landscape



Streetscape



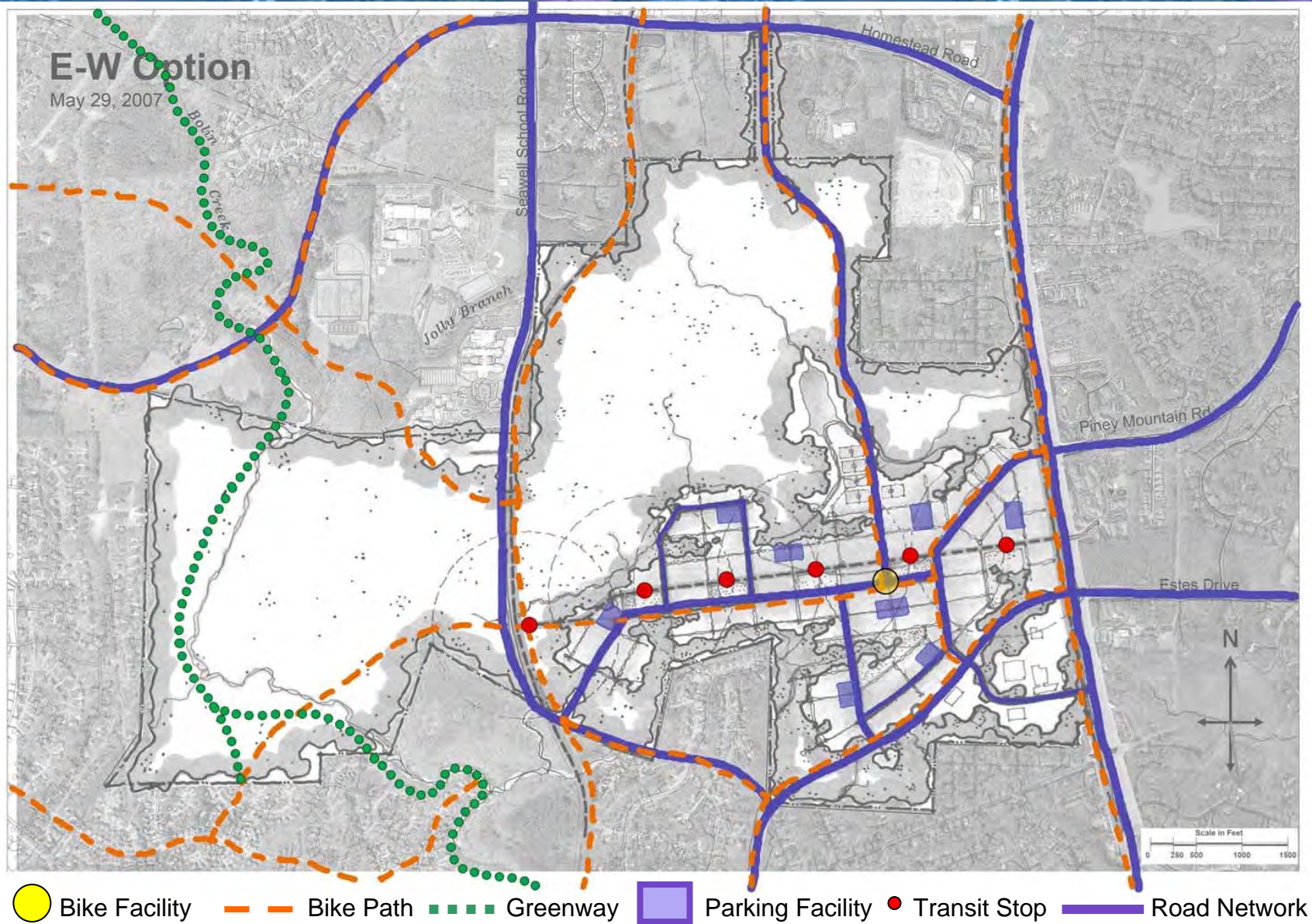
Greens and Parks

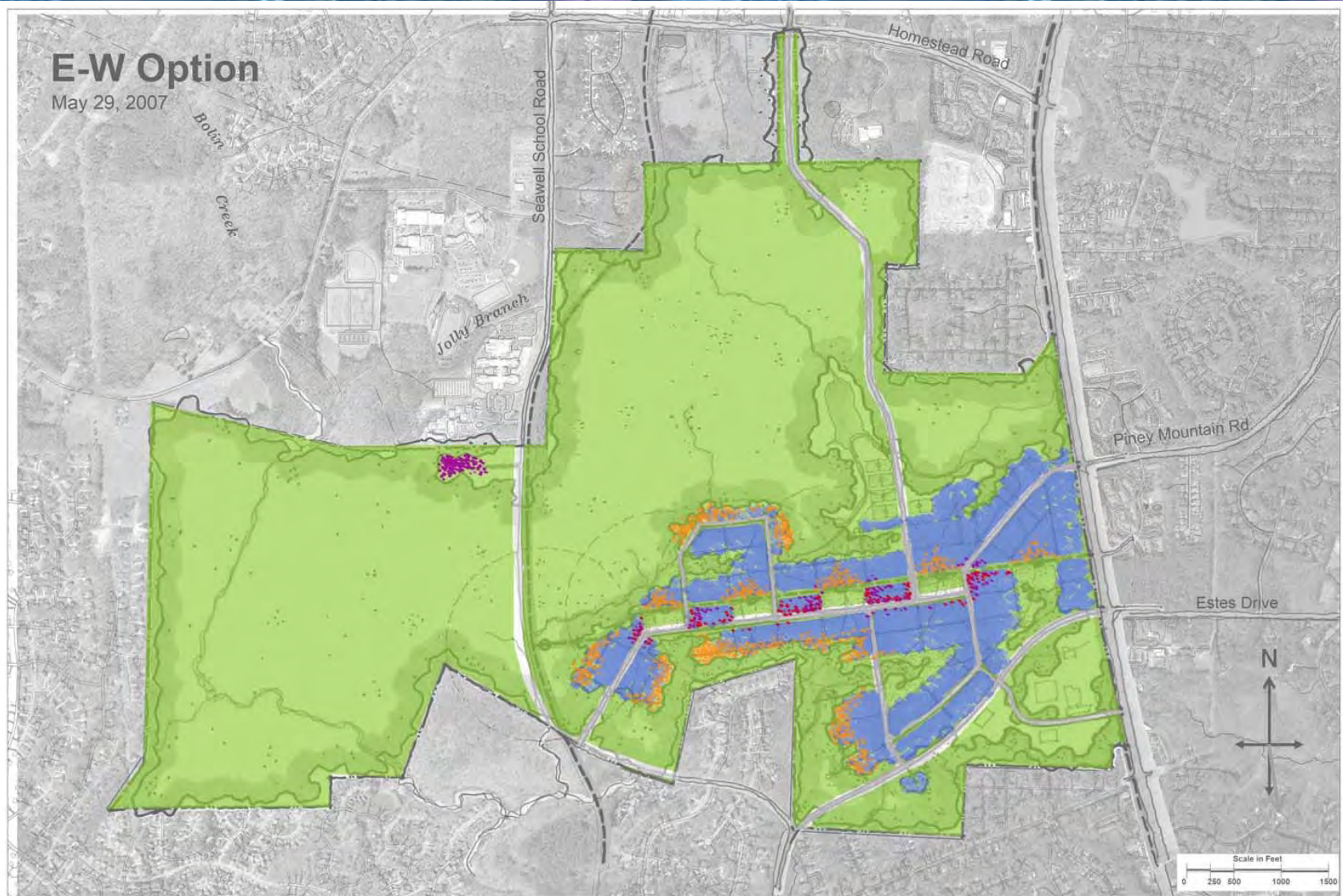


Recreation Fields

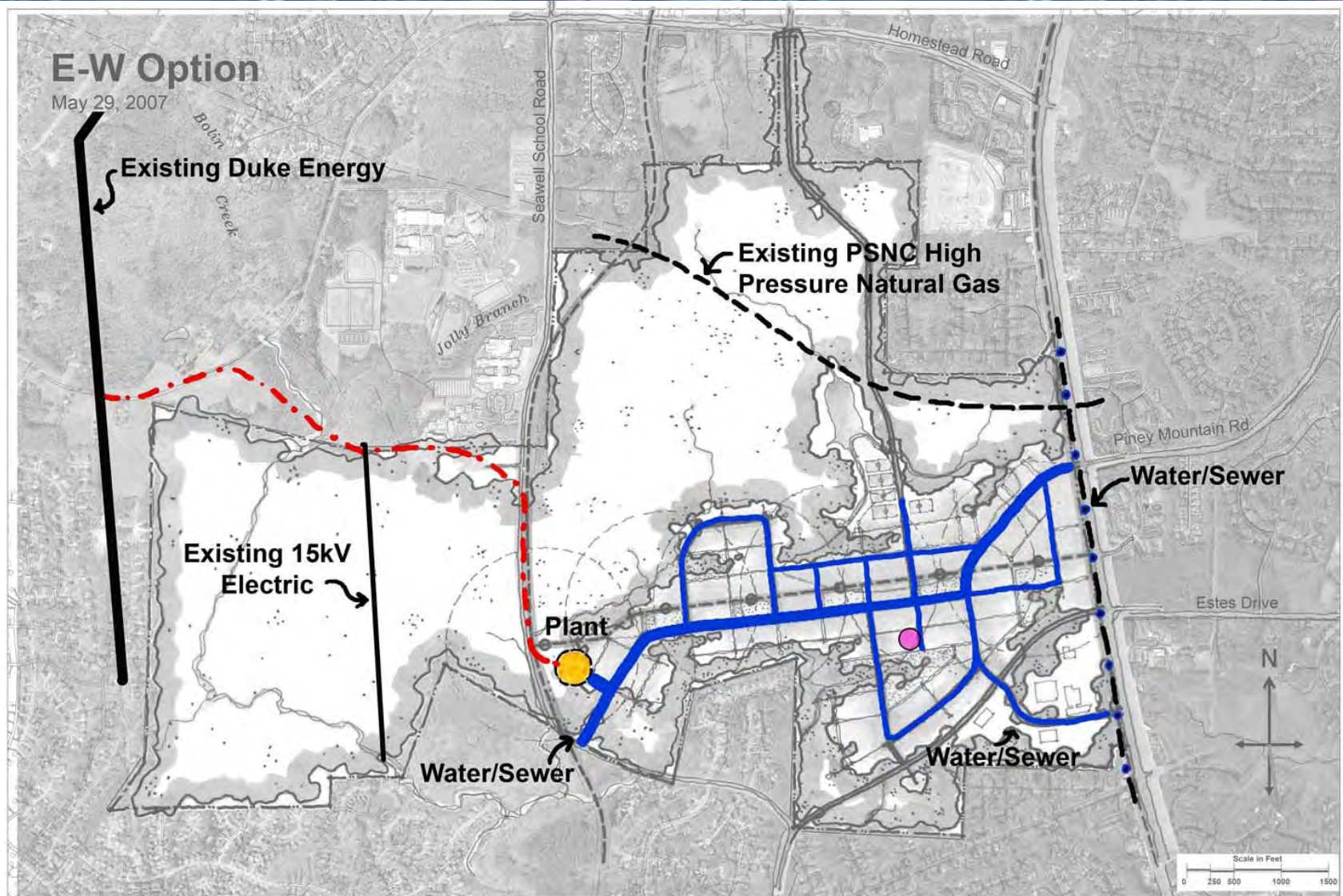


 Pedestrian Circulation Network





Research/Institutional Civic Retail/Mixed Open Space Residential



● Central Plant ● Early Phase Plant - - - Electric Duct Bank



Transit Concept

Legend

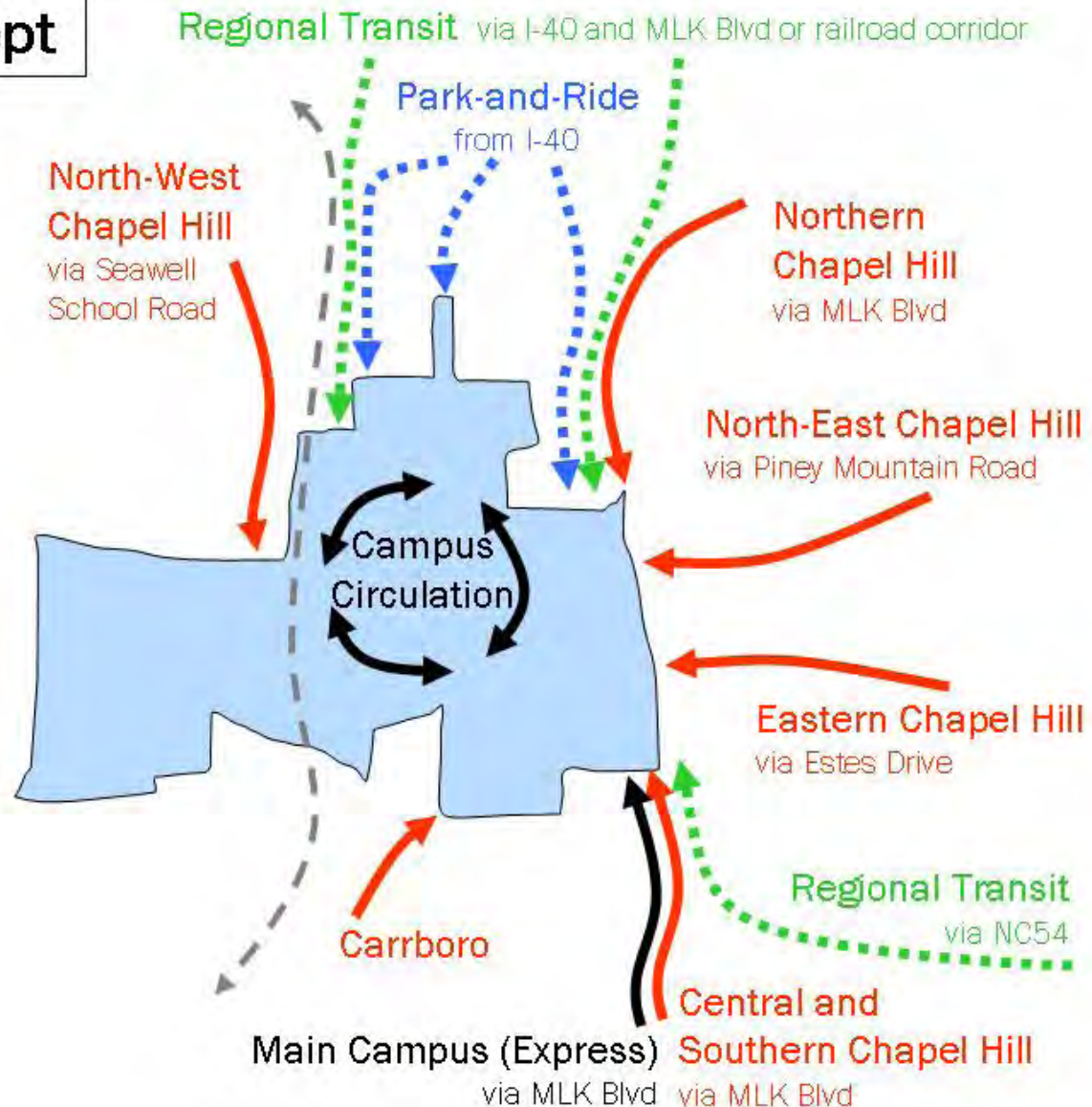
.....
Regional Transit
(Options Shown)

.....
I-40 Park-And-Ride
(Options Shown)

—
Campus Shuttles

—
Potential Local Transit

--
Railroad Corridor

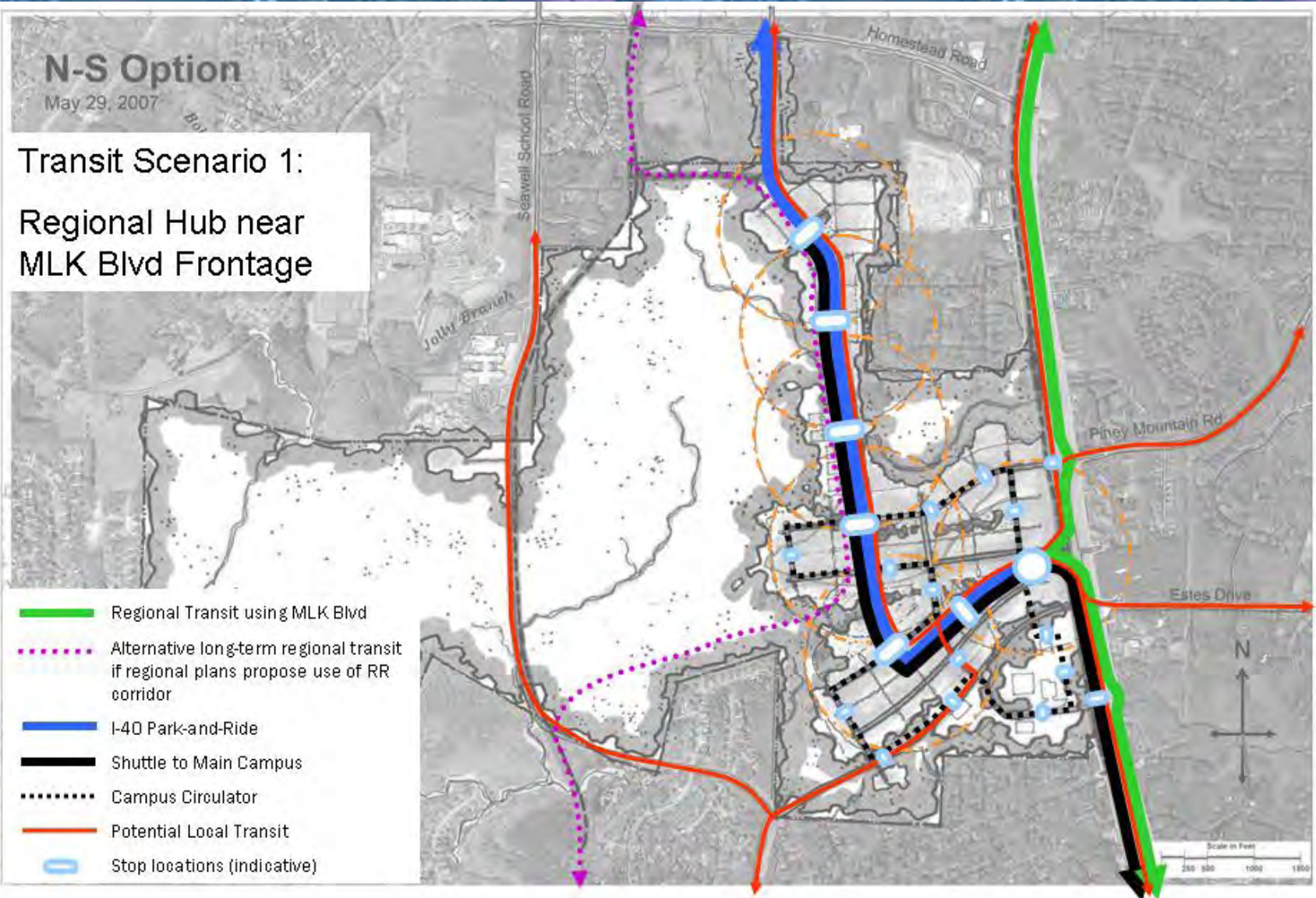




N-S Option

May 29, 2007

Transit Scenario 1: Regional Hub near MLK Blvd Frontage

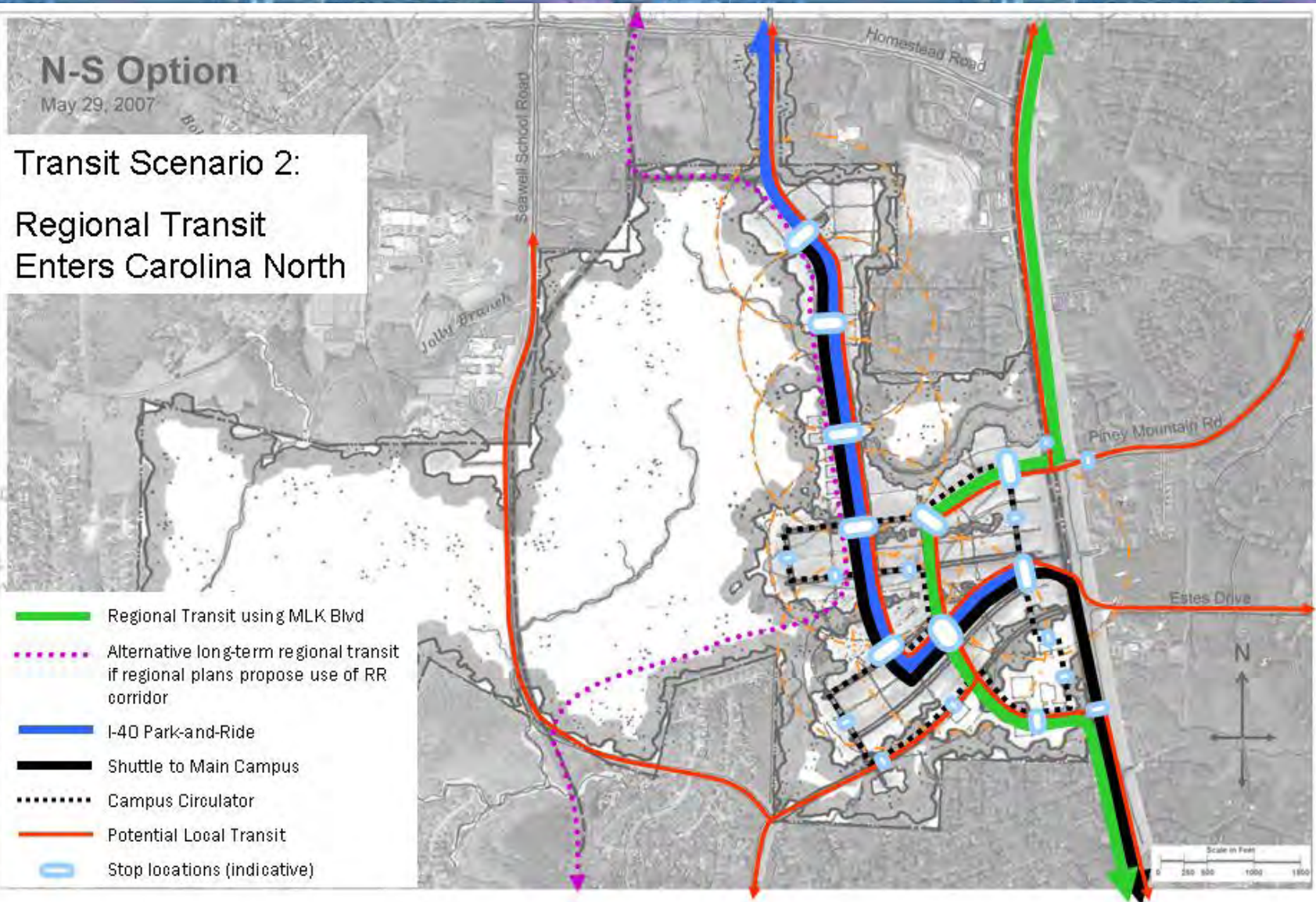




N-S Option

May 29, 2007

Transit Scenario 2: Regional Transit Enters Carolina North





N-S Option

May 29, 2007

Transit Scenario 3: Regional Transit Along Spine and Homestead Road

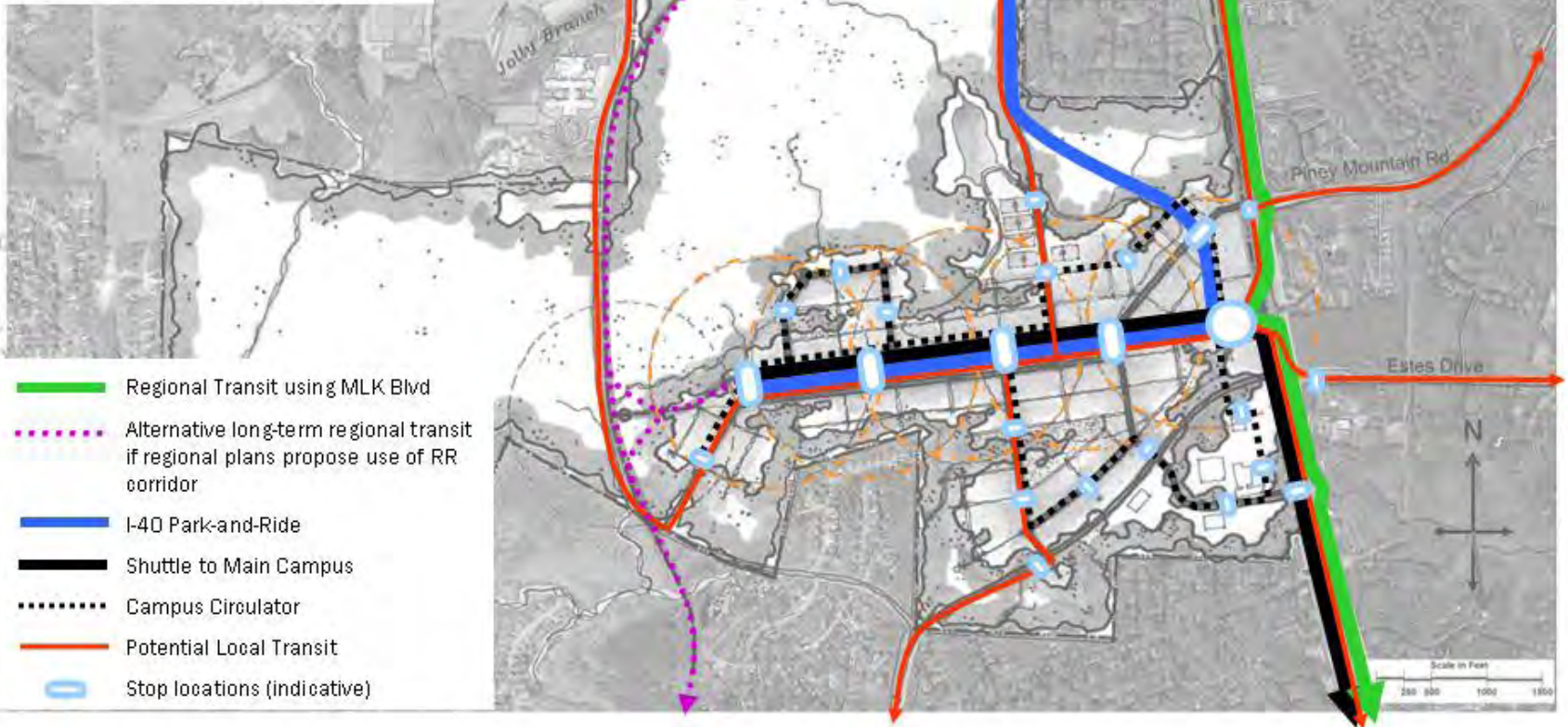




E-W Option

May 29, 2007

Transit Scenario 1: Regional Hub near MLK Blvd Frontage



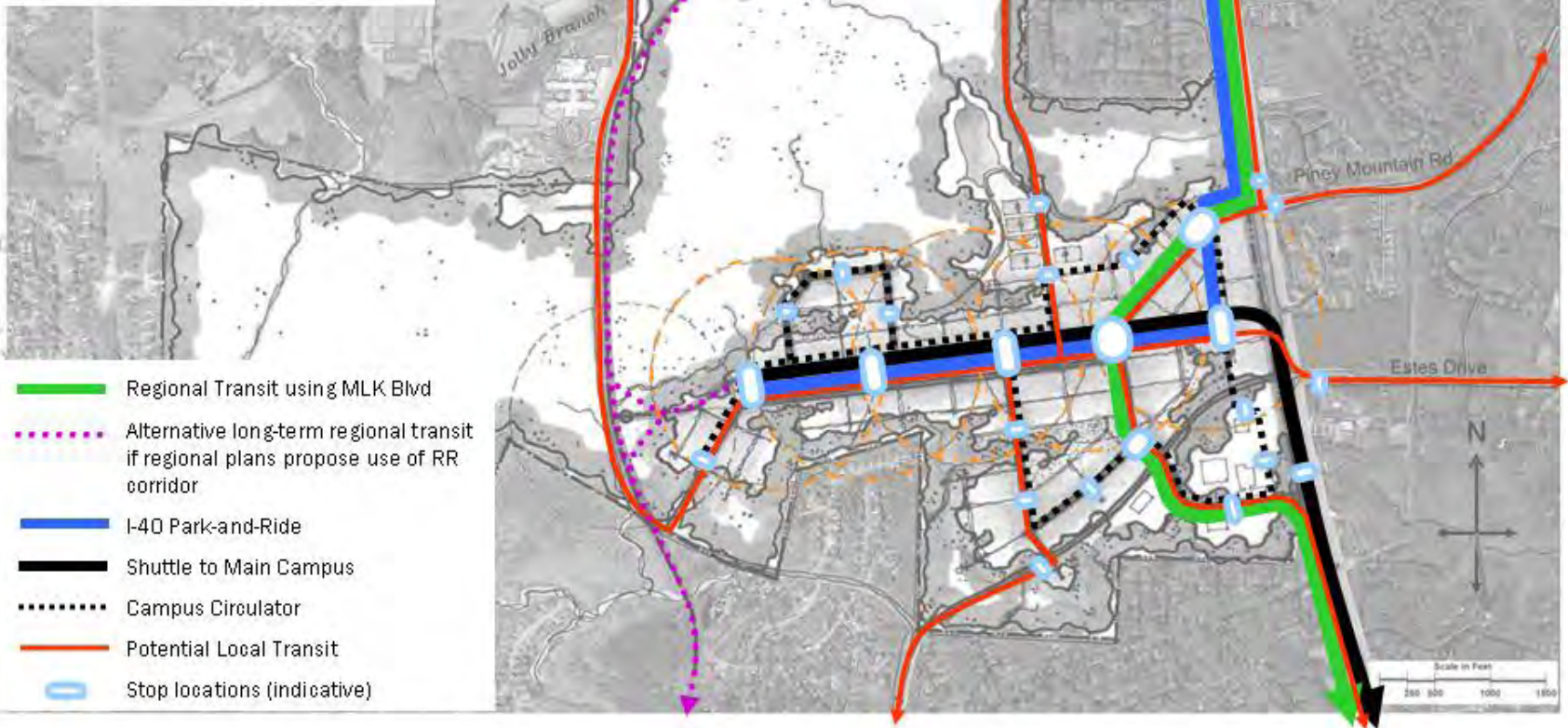


E-W Option

May 29, 2007

Transit Scenario 2:

Regional Transit Enters Carolina North

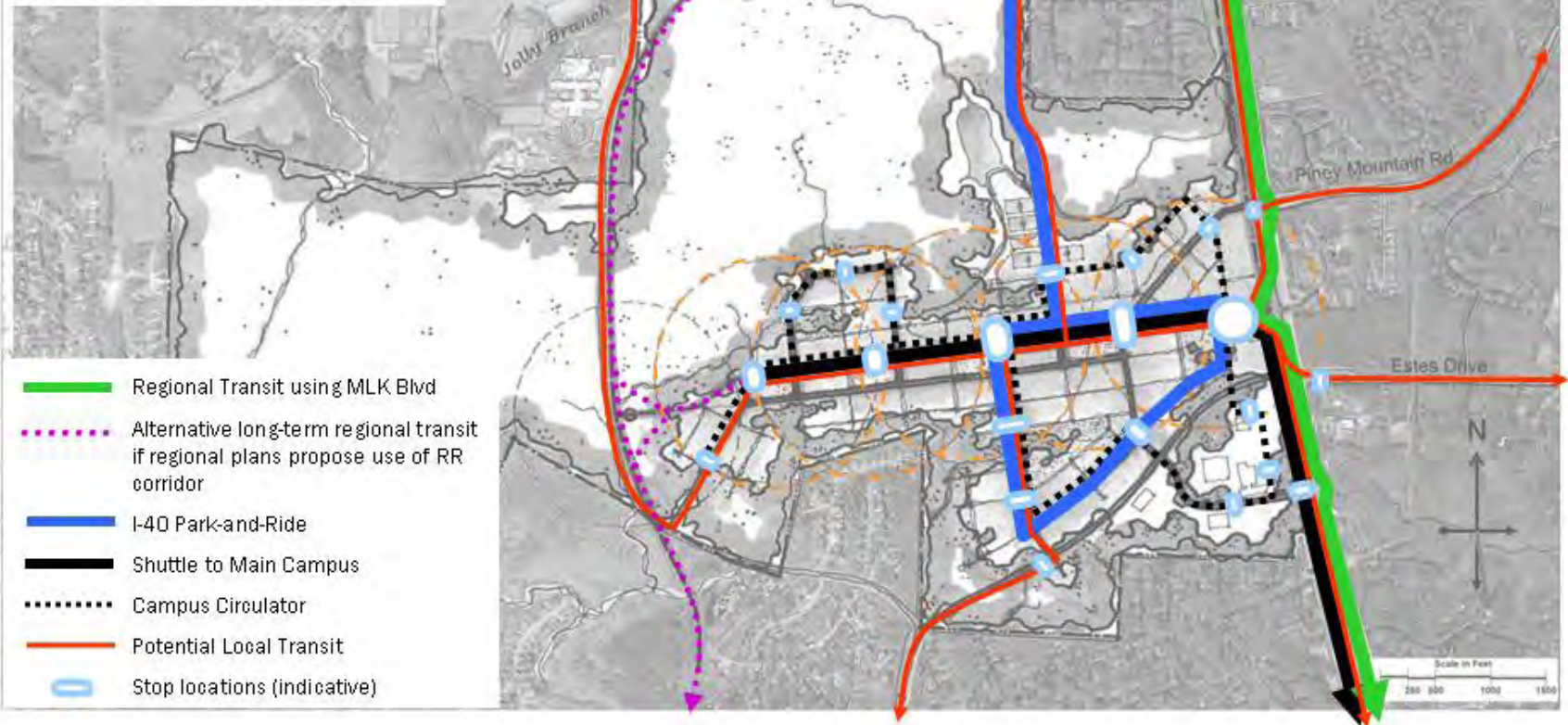




E-W Option

May 29, 2007

Transit Scenario 3: Park-And-Ride Serves Southern Blocks



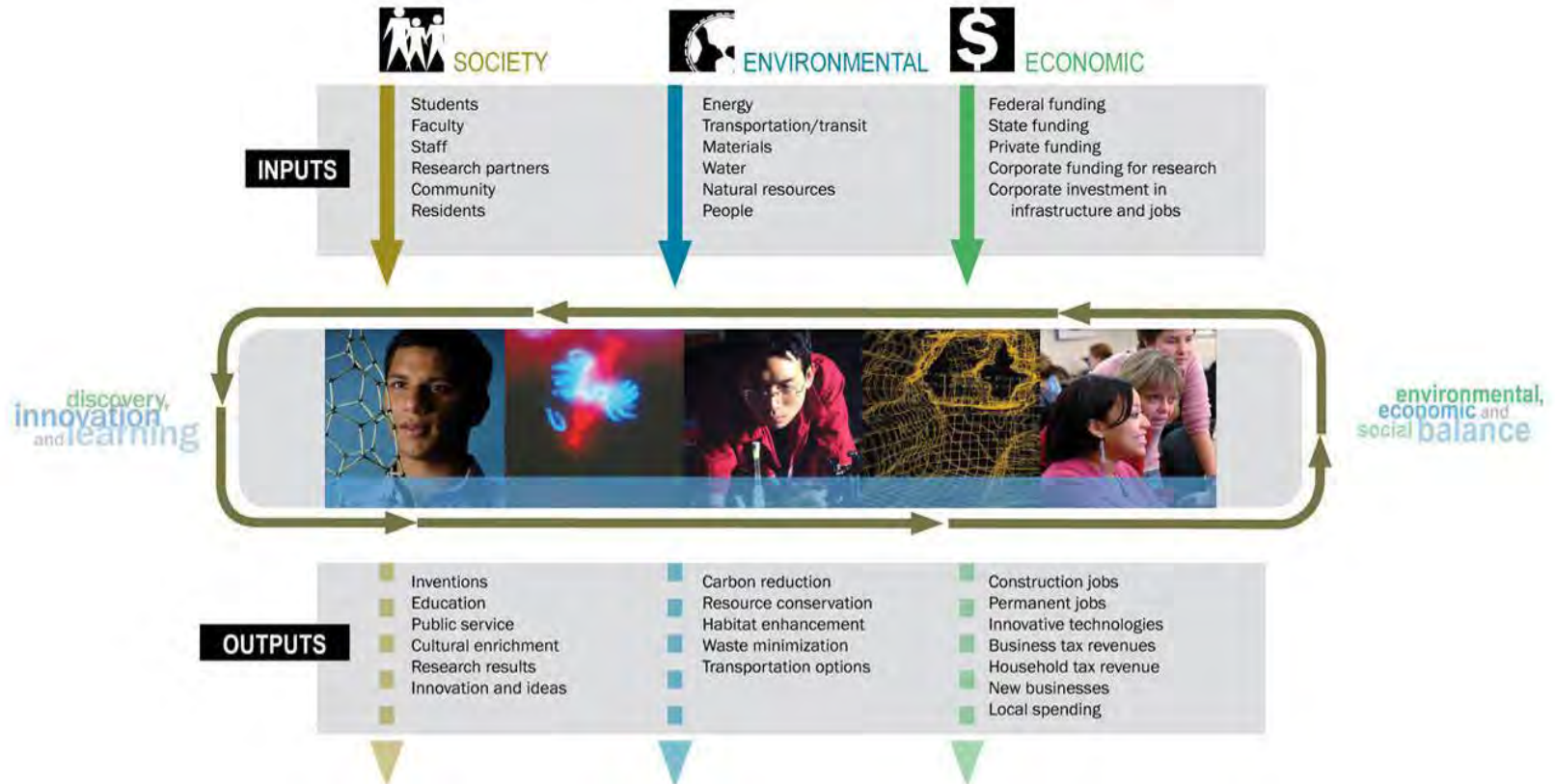


THE UNIVERSITY
of NORTH CAROLINA
at CHAPEL HILL

CAROLINA NORTH



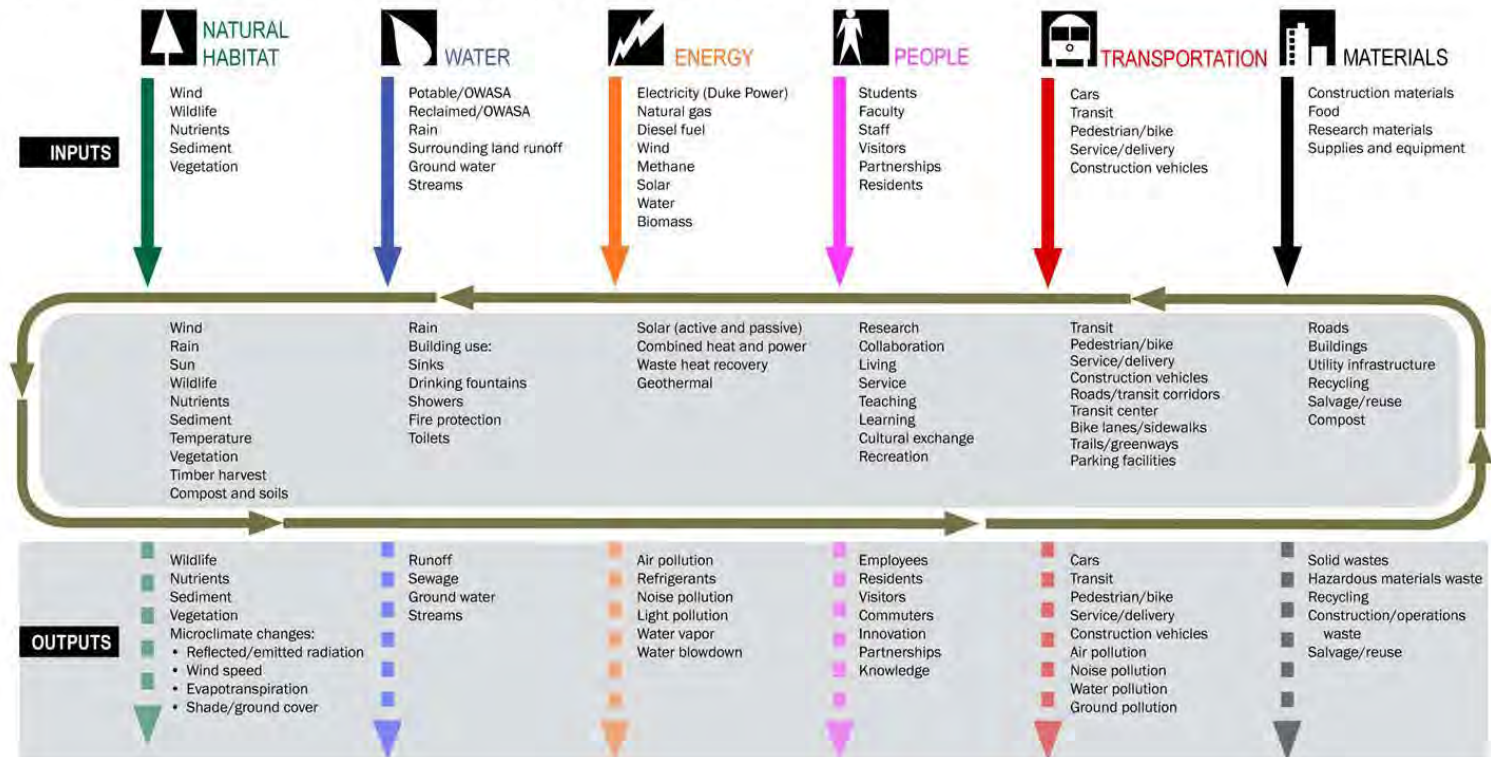
Carolina North - Life of Campus





CAROLINA NORTH

Carolina North - Life of Campus Environmental Flow



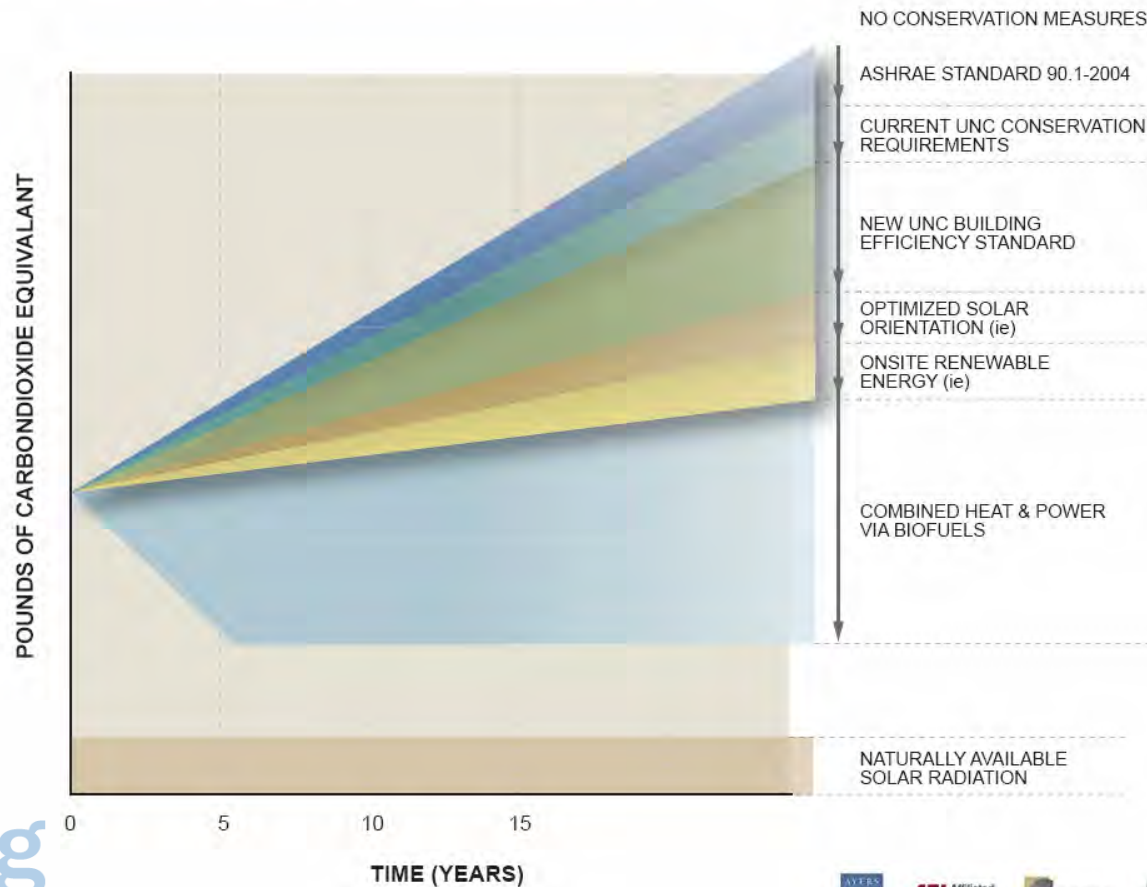


THE UNIVERSITY
of NORTH CAROLINA
at CHAPEL HILL

CAROLINA NORTH



OPTIONS FOR ENERGY RELATED CARBON REDUCTION



discovery,
innovation
and learning



AEI Affiliated Engineers



STONEBRIDGE