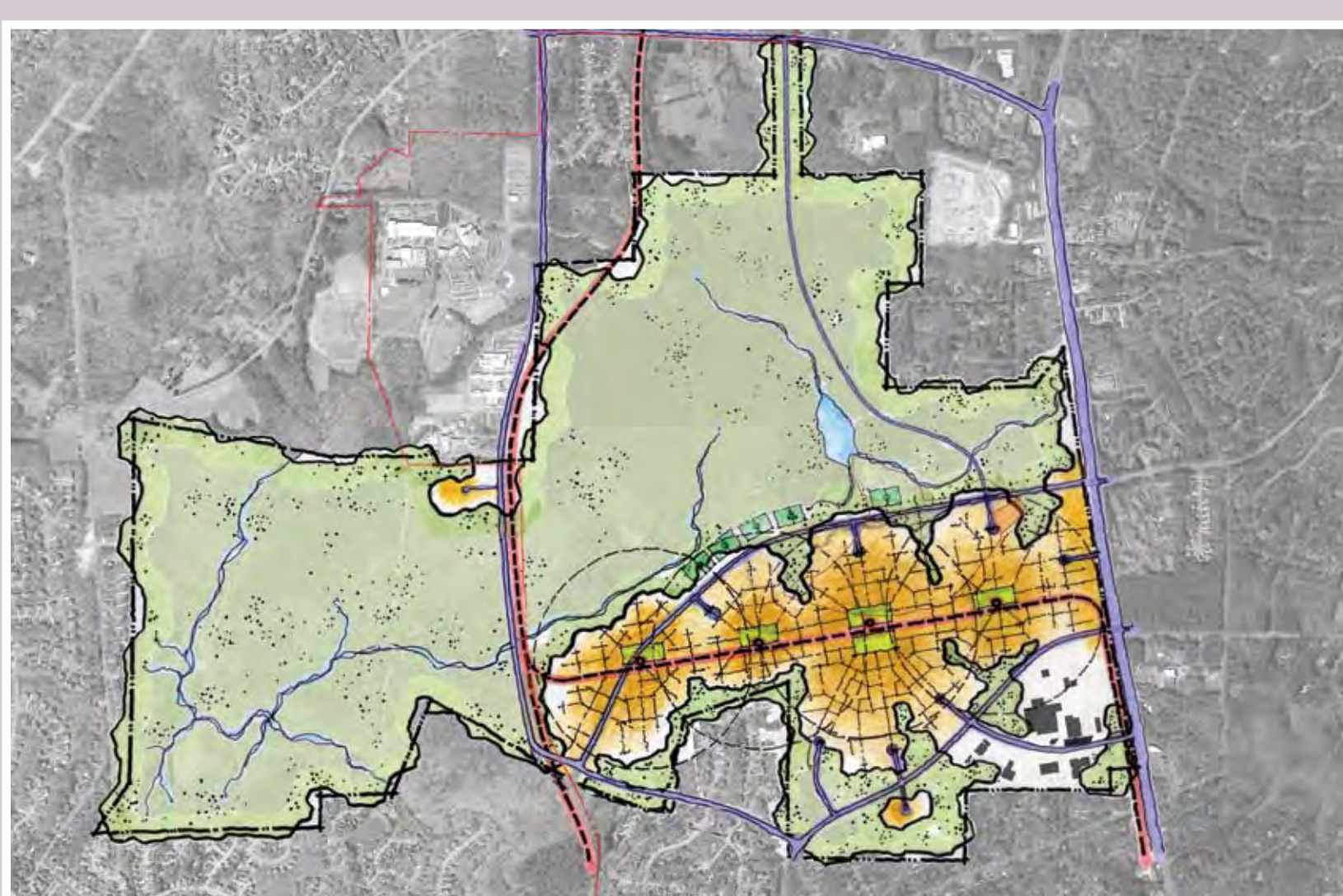


CENTERS

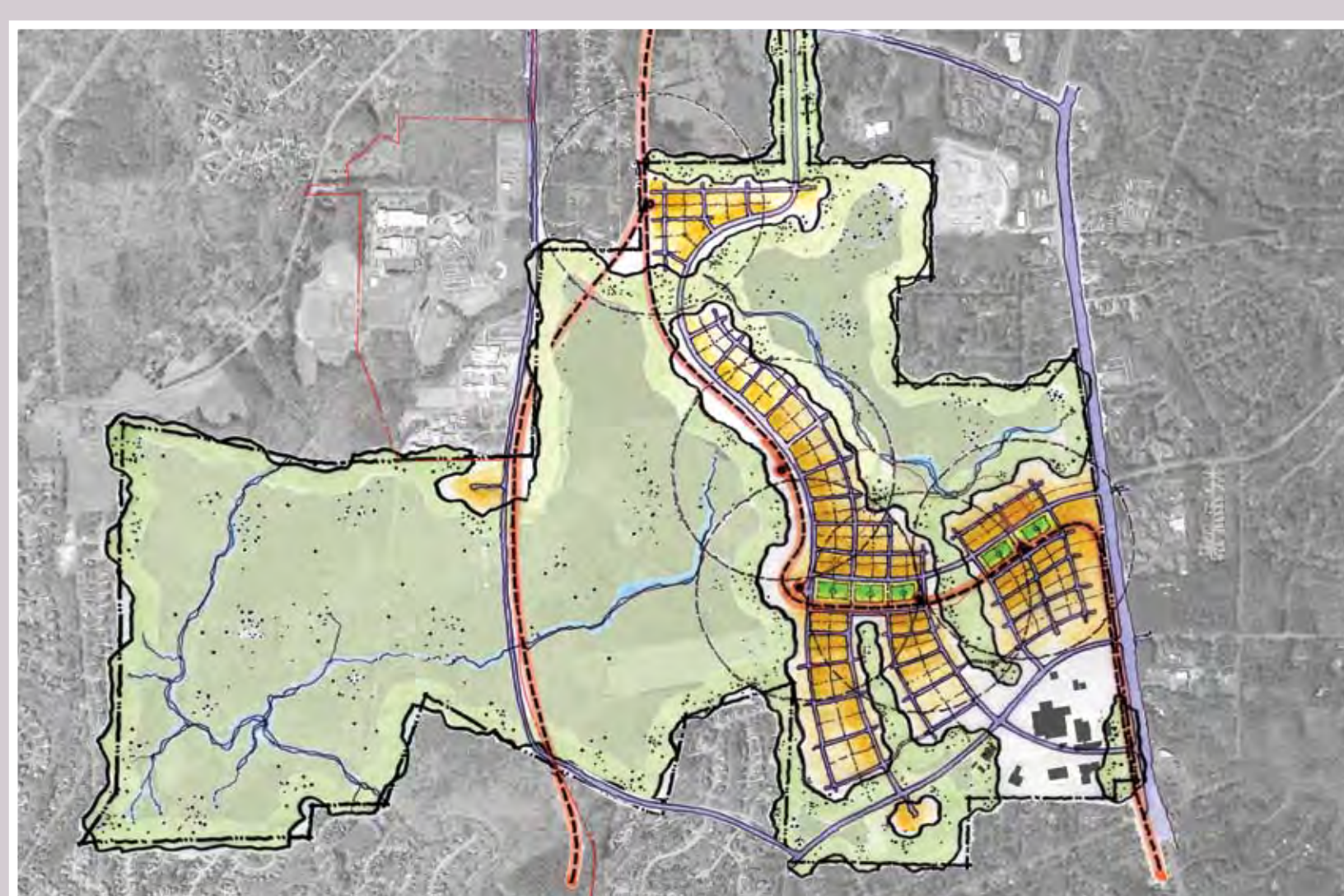
- Dense, compact development along a central spine with additional development radiating from centers
- Large open area
- Transit through the center of the development, separated from cars
- Reservoirs of parking at perimeter
- North-south road alignment east of Crow Branch
- Land use and growth patterns are flexible around centers
- All development is within 1,000 ft of transit corridor

discovery,
innovation
and learning

CENTERS



INTERWOVEN



GRID

