



## UNC Institute for the Environment



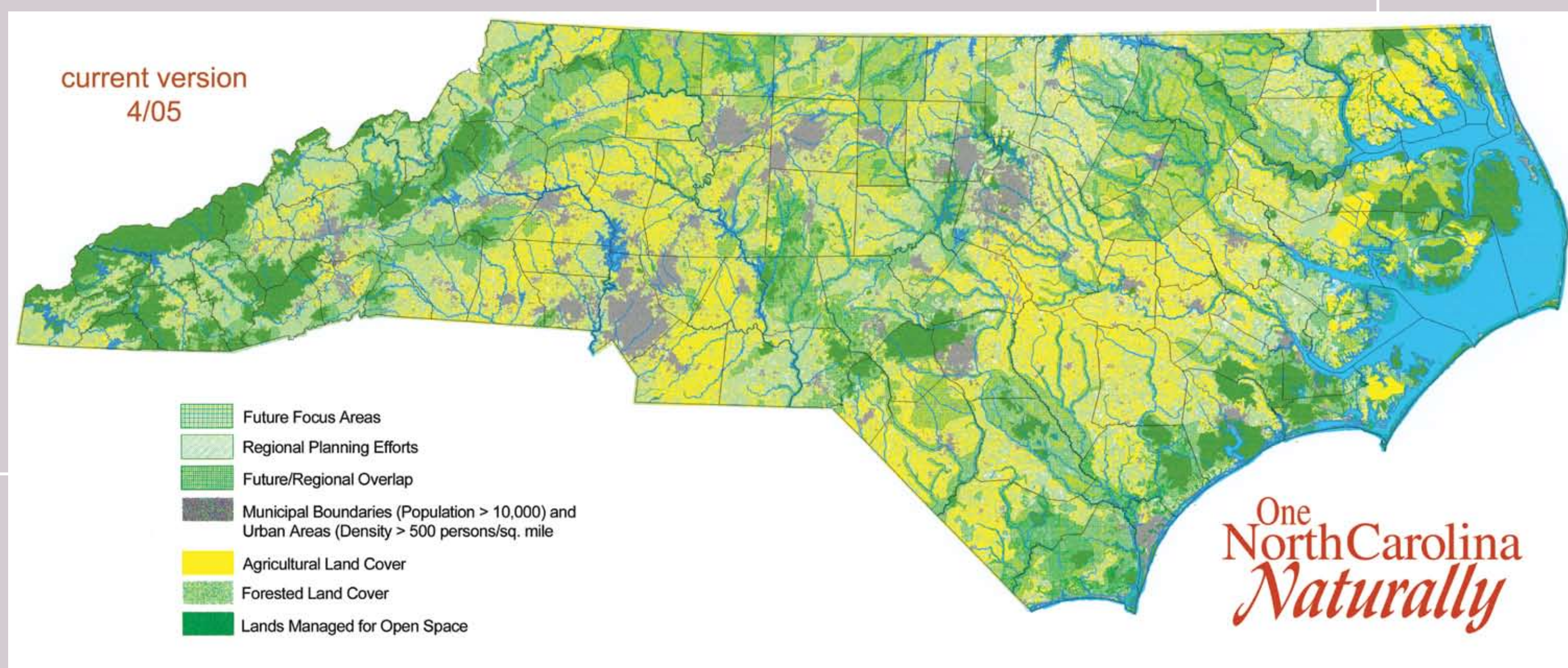
On the roof of the School of Public Health, scientists fill this chamber with synthetic smog and place lung cells inside it to investigate the effects of air pollution. The chamber is connected via a large tube to the research laboratory on the building's top floor.

### CRED (COMMUNITY CARBON REDUCTION PROJECT)

The CRed program helps communities cut their carbon dioxide emissions by assessing emission sources and discovering innovative strategies for reduction. Douglas Crawford-Brown and UNC's Institute for the Environment led UNC and the Town of Chapel Hill to adopt ambitious targets for emission reduction in response to the challenge of climate change. Crawford-Brown and UNC have been working with Town staff to develop an Environment Center that provides the resources to guide reduction strategies.

### VIRTUAL NORTH CAROLINA

Virtual North Carolina is a web-based database and decision support system that helps communities throughout North Carolina achieve sustainability. The system guides communities through the process of assessing their performance on key measures of environmental quality, public health, economic vitality, provision of infrastructure, and social equity. The project is a core part of the Institute's Center for Sustainable Community Design, which aims to ensure that the communities of tomorrow avoid the environmental problems created by current typical patterns of growth.



One North Carolina Naturally/Virtual North Carolina is a collaboration among the UNC Institute for the Environment, the NC Department of Natural Resources, and the NC Center for Geographic Information and Analysis, working toward strategic conservation planning for the long term.

### ENERGY AND ENVIRONMENT

UNC's Institute for the Environment and Institute for Advanced Materials, Nanoscience and Technology have joined forces in creating the next generation of energy supplies. This includes developing necessary scientific and technological insights; creating markets; crafting government strategies to stimulate these markets; and assessing the health effects of energy systems—in collaboration with groups such as the Center for Environmental Medicine, Asthma and Lung Biology and the School of Public Health—so society can be sure that new energy supplies truly are better for the environment and public health.

discovery,  
innovation,  
and learning

The UNC Institute for the Environment will benefit from using Carolina North as a living laboratory—while it assists the University, and the local community, in designing and building it. To facilitate this collaboration, the Institute hopes to locate its headquarters building on the Carolina North campus.

