



## Triangle Land Conservancy Conservation Area Monitoring Report Carolina North

---

**Property Name:** Crow Branch Conservation Area      **Date of visit:** 3/12/2014  
**County:** Orange  
**Property Type:** Restrictive Covenants

**Local Contact:**      **Triangle Land Conservancy**      **919-908-8809 (office)**  
                                 **514 S. Duke St.**                                   **919-755-9356 (fax)**  
                                 **Durham, NC 27701**

**Lead conservation area monitor:** Matt Rutledge  
**Other person(s) attending inspection:** None

The Carolina North Property is subject to a Declaration of Restrictive Covenants recorded in Book 5541 page 360 of the Office of the Orange County Register of Deeds. A copy of the Restrictive Covenants may be found at the Register of Deeds office or the link below.

<http://carolinanorth.unc.edu/Portals/CarolinaNorth/Documents/Declaration%20of%20Restrictive%20Covenants%20-%20Carolina%20North%20Conservation%20Areas%20%20%20.pdf>

There is a LAND STEWARDSHIP POLICY on file for this property. The Land Stewardship Policy was completed January 15, 2013 and is available at the link below.

<http://carolinanorth.unc.edu/Portals/CarolinaNorth/Documents/Carolina%20North%20Land%20Stewardship%20Policy-Final%201-15-13.pdf>

***Problem areas noted from prior visits and areas to pay special attention to:***

None.

## TLC Conservation Area Monitoring Report (Cont.)

**Are property boundaries clearly marked? Note any new concerns about boundaries and signs of encroachment, and if existing problems have been corrected?**

Yes. Boundaries are clearly marked with signs. No areas of concern.

**The Restrictive Covenants list eight restricted or prohibited uses and activities. Are there any violations of the following restricted or prohibited uses and activities?**

**A. Construction.** Construction or placement of buildings, roads, billboards or other advertising, utilities or other structures on or above the ground is prohibited in the Conservation Areas. Construction or placement of signs is prohibited in the Conservation Areas except for directional and boundary signs, interpretive signs describing the conservation values of the Conservation Areas, and signs and kiosks prescribing rules and regulations for the use of the Conservation Areas. **No new construction was observed.**

**B. Dumping and Landfill Activities.** Dumping or placing soil or other substances or materials as landfill, or dumping or placing trash, waste or unsightly or offensive materials is prohibited in the Conservation Areas. **No dumping or landfill activities were observed.**

**C. Vegetation Destruction.** Removal or destruction of healthy native trees, shrubs or other vegetation is prohibited in the Conservation Areas, unless done as a component of an established forest management plan. **No vegetation destruction was observed.**

**D. Excavation or Dredging.** Excavation, dredging or removal of loam, peat, gravel, soil, rock or other mineral substance in such manner as to affect the surface is prohibited in the Conservation Areas. **No excavation or dredging was observed.**

**E. Detrimental Surface Use.** Surface use except for forest or outdoor recreational purposes or purposes permitting the land or water area to remain predominantly in its natural condition is prohibited in the Conservation Areas. **No detrimental surface use was observed.**

**F. Activities Detrimental to Drainage; Flood Control, etc.** Activities detrimental to drainage, flood control, water conservation, erosion control or soil conservation are prohibited in the Conservation Areas. **No activities detrimental to drainage, flood control or other listed items were observed.**

**G. Other Detrimental Acts.** Other acts or uses detrimental to the retention of land or water areas are prohibited in the Conservation Areas. **Based on our observation, the University has been a good steward of the Carolina North property, no detrimental acts were observed during our visits.**

**H. Construction of New Trails and Greenways.** Construction of new trails (except for potential greenways and paths that are located and approved pursuant to the terms of the Development Agreement) is prohibited in the Conservation Areas. **No new trails or greenways were observed.**

**Additional comments or observations**

TLC met with Greg Kopsch, the Forest Manager, to discuss management activities over the past year in the Crow Branch Conservation Area. The only activities inside the Conservation Area were minor road maintenance activities to clear the side gutters of debris to improve drainage. Road maintenance is permitted by the restrictive covenants.

---

**To the best of your knowledge and observation, is the land owner complying with the restrictive covenants? YES**

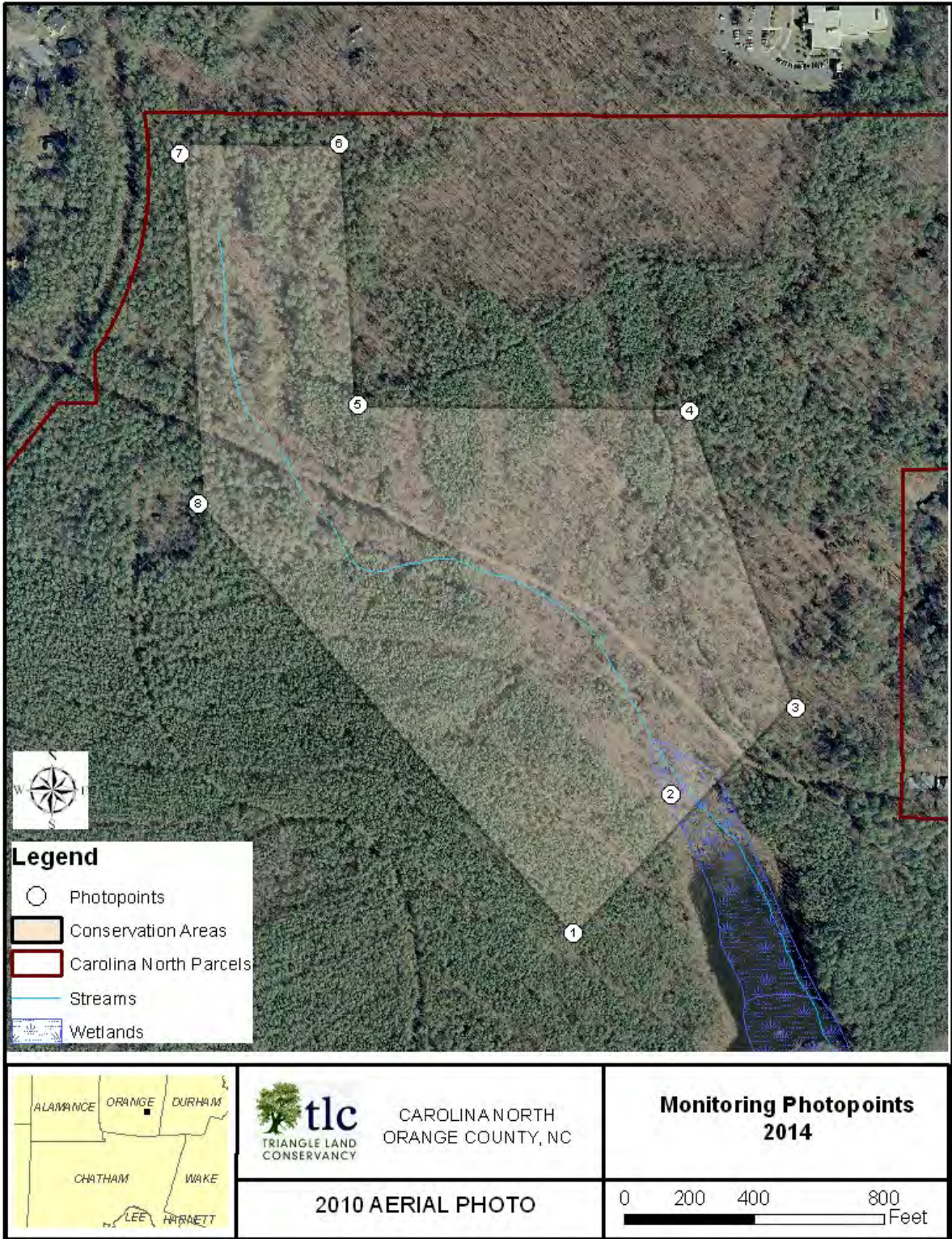
**Steward's name: Matt Rutledge**  
**Address: 514 S. Duke St.**  
**Durham, NC 27701**

**Signature: Matthew D. Rutledge**  
**Phone: 919-908-8809**

**Indicate attachments to the report. Date and sign all materials. Provide descriptions of photograph and illustration locations.**

**ground photos**     **aerial photos**     **maps**     **illustrations**     **other**

# Map



**Photo Documentation Table  
Crow Branch Conservation Area**

Photo Point	Photo Number	Description	Azimuth
1	1	Southernmost corner	225°
	2	Southernmost corner	30°
2	3	Wetland area	-
3	4	Easternmost corner	210°
	5	Easternmost corner	345°
4	6	Northeast corner	160°
	7	Northeast corner	270°
5	8	Internal corner	90°
	9	Internal corner	0°
6	10	Northeast corner	180°
	11	Northeast corner	270°
7	12	Northwest corner	90°
	13	Northwest corner	180°
8	14	Southeast corner	0°
	15	Southeast corner	150°



Photo #1. Southernmost corner with view northwest along boundary.



Photo #2. Southernmost corner with view northeast.



Photo #3. Microstegium in wetland area, could be target of control efforts. Barred owl also seen at this location.



Photo #4. Easternmost corner with view southwest.



Photo #5. Easternmost corner with view northwest.



Photo #6. Northeast corner with view southeast down boundary.



Photo #7. Northeast corner with view west down boundary.



Photo #8. Interior corner with view east down boundary.



Photo #9. Interior corner with view north along boundary.



Photo #10. Northeast corner with view south down boundary.



Photo #11. Northeast corner with view west along boundary.



Photo #12. Northwest corner with view east along boundary.





Photo #13. Northwest corner with view south.



Photo #14. Southwest corner with view north along boundary.



Photo #15. Southwest corner with view southeast along boundary.