

Community Meeting

May 29, 2007

PLENARY

# CAROLINA NORTH



THE UNIVERSITY  
*of* NORTH CAROLINA  
*at* CHAPEL HILL



- Introduction to today's session
  - Jack Evans, UNC Carolina North
- Today's speakers
  - Joe DeSimone, Kenan Professor of Chemistry
  - Anna Wu, UNC Director of Facilities Planning
  - Luanne Greene, Ayers/Saint/Gross
  - Mike Walters, AEI Affiliated Engineers
  - George Alexiou, Martin-Alexiou-Bryson



## Developing a Plan: *some common themes*

1. Carolina North will support the mission of the University
2. Carolina North will be a compact, mixed-use academic community
3. Designs will support a sustainable, high-performance campus
4. Designs will reflect analysis and workshops
  - Ecological Assessment
  - Leadership Advisory Committee principles – community input
  - Infrastructure workshops – consulting team and University planners
  - Input from the community and consultants – public sessions



## Possible Development: the First 15 years

Possible Program Use	Type	Estimated SF
Centers and Institutes - I	Research	122,000
Centers and Institutes - II	Research	93,000
Centers and Institutes - III	Academic/Research	100,000
First School	Academic	75,000
Innovation Center	Research	85,000
Interdisciplinary Research Center	Research	150,000
RENCI	Research	170,000
School of Law	Academic	200,000
School of Public Health	Research	155,000
UNC Health Care System	Patient Care/Offices	200,000
University Facility Services	Support	75,000
Corporate Partners		525,000
Housing		500,000
Services (Retail, commercial, service, civic, etc.)		100,000
<b>TOTAL Possible Program Space:</b>		<b>2,550,000 SF</b>

Other Site Requirements: Recreation, Recreation Fields, Parking

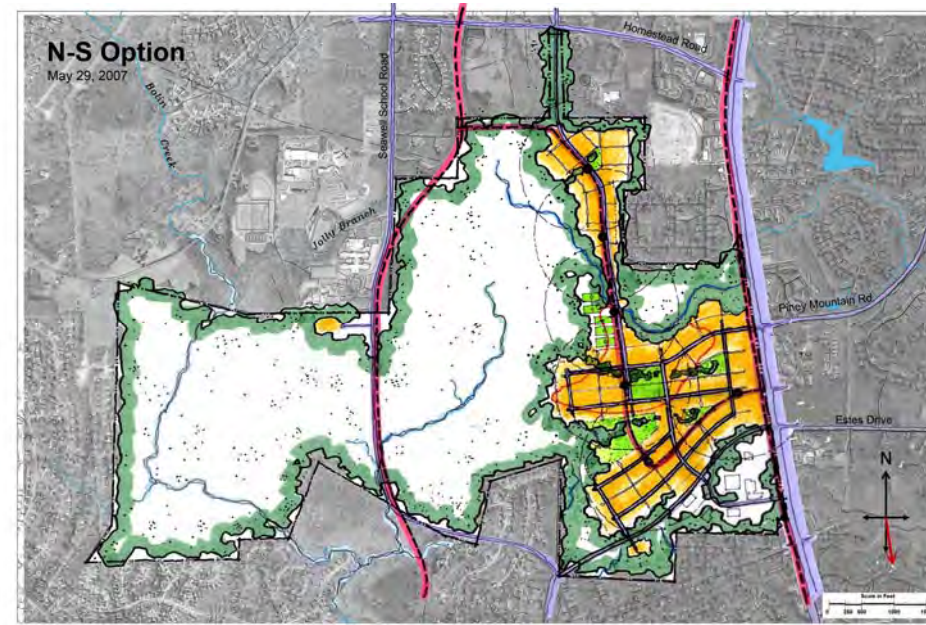
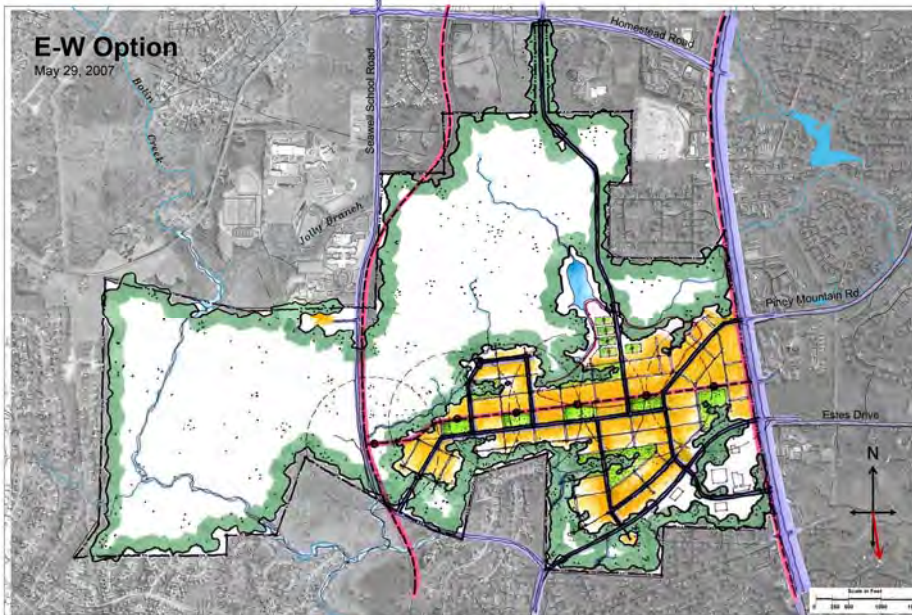


## Planning Activities

- Land use planning is underway
- Related work: transit study, fiscal impact analysis underway
- Draft plan to Board of Trustees in July 2007
- Final plan to Board of Trustees in September 2007
- Submission of concept plan to Town in October 2007

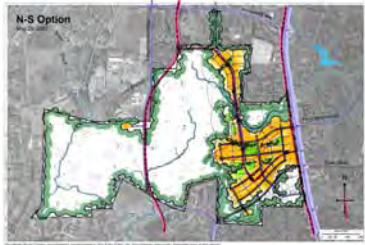
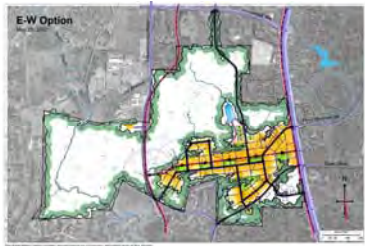


# Developing a Plan: *synthesis of comments*





## Developing a Plan: *synthesis of comments*



- Respect the ecology of the site
- Focus on transit oriented development
- Create a sense of identity and place
- Reliable and appropriate local integration
- Efficient and appropriate density and land use

Today's breakout sessions

Comment Cards

<http://cn.unc.edu>