



Community Meeting

April 26, 2007

CENTERS

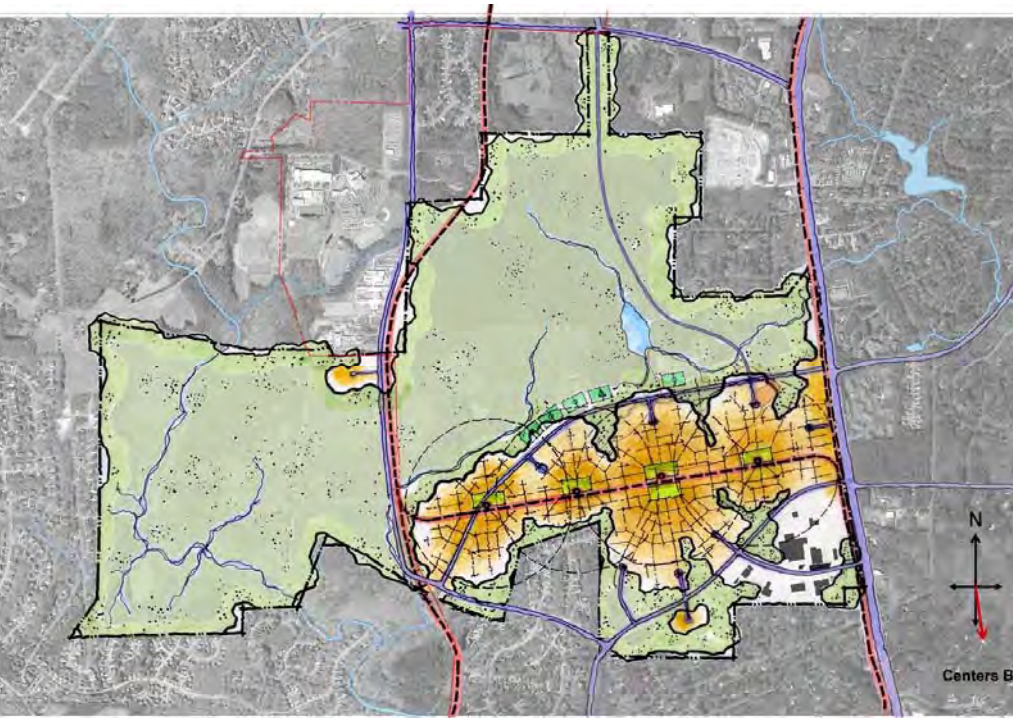
CAROLINA NORTH



THE UNIVERSITY
of NORTH CAROLINA
at CHAPEL HILL



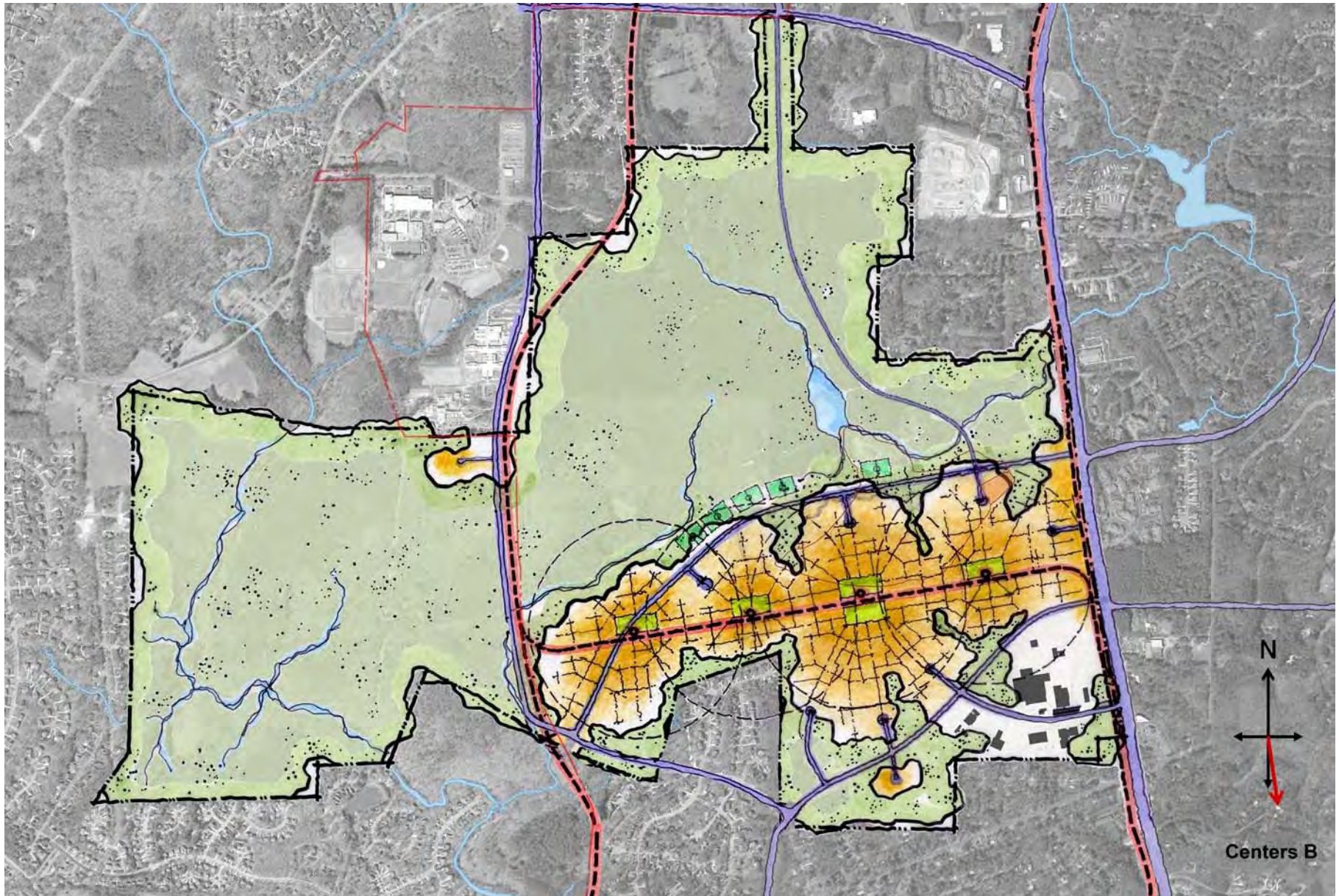
CAROLINA NORTH



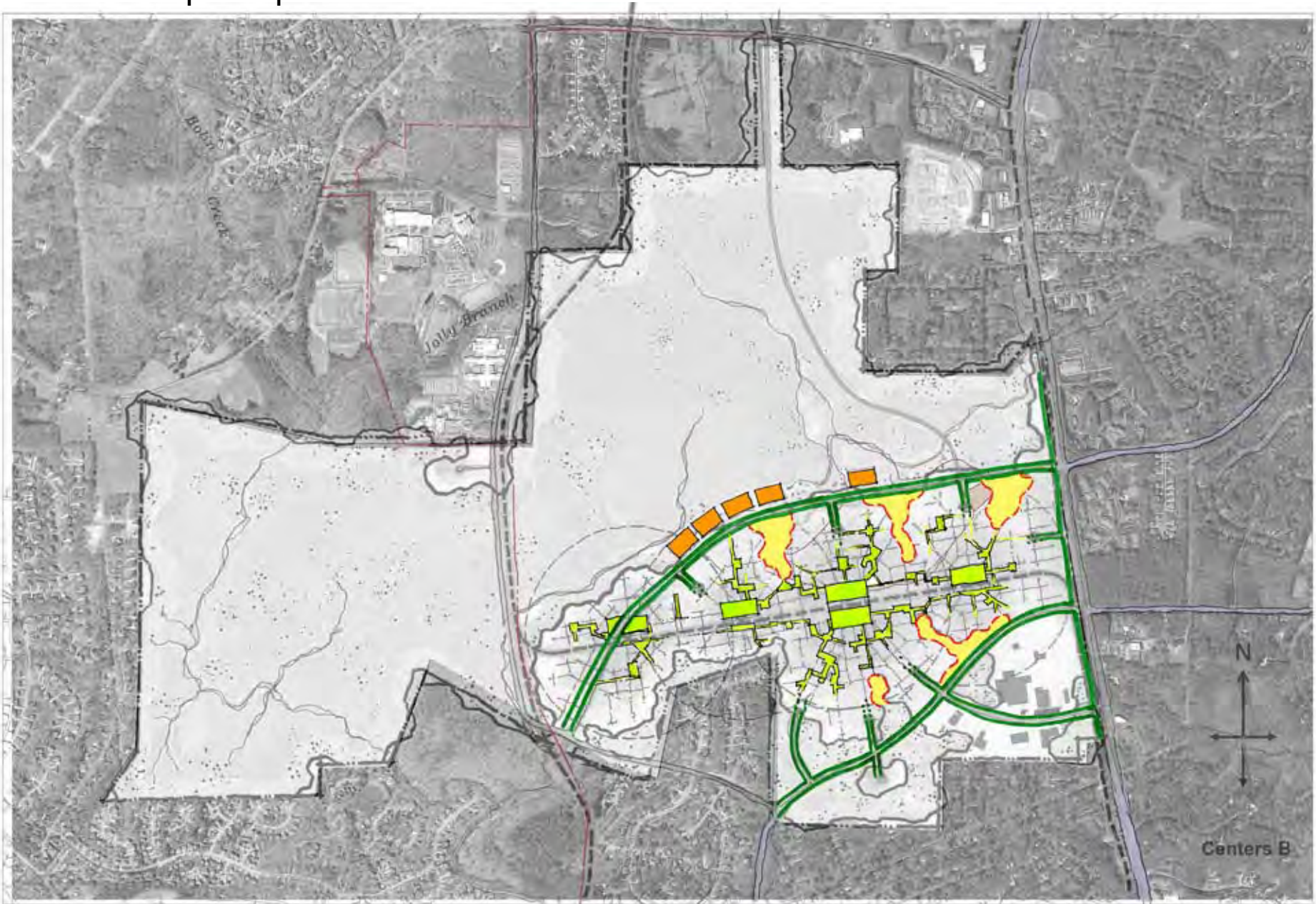
Centers

- Dense, compact development along a central spine with additional development radiating from centers
- Large open area
- Transit through the center of the development, separate from cars
- Reservoirs of parking at perimeter
- North-South Road alignment east of Crow Branch
- Land use and growth patterns are flexible around centers
- All development within 1,000 ft of transit corridor

Centers



Centers – Open Space



Centers – Pedestrian Circulation



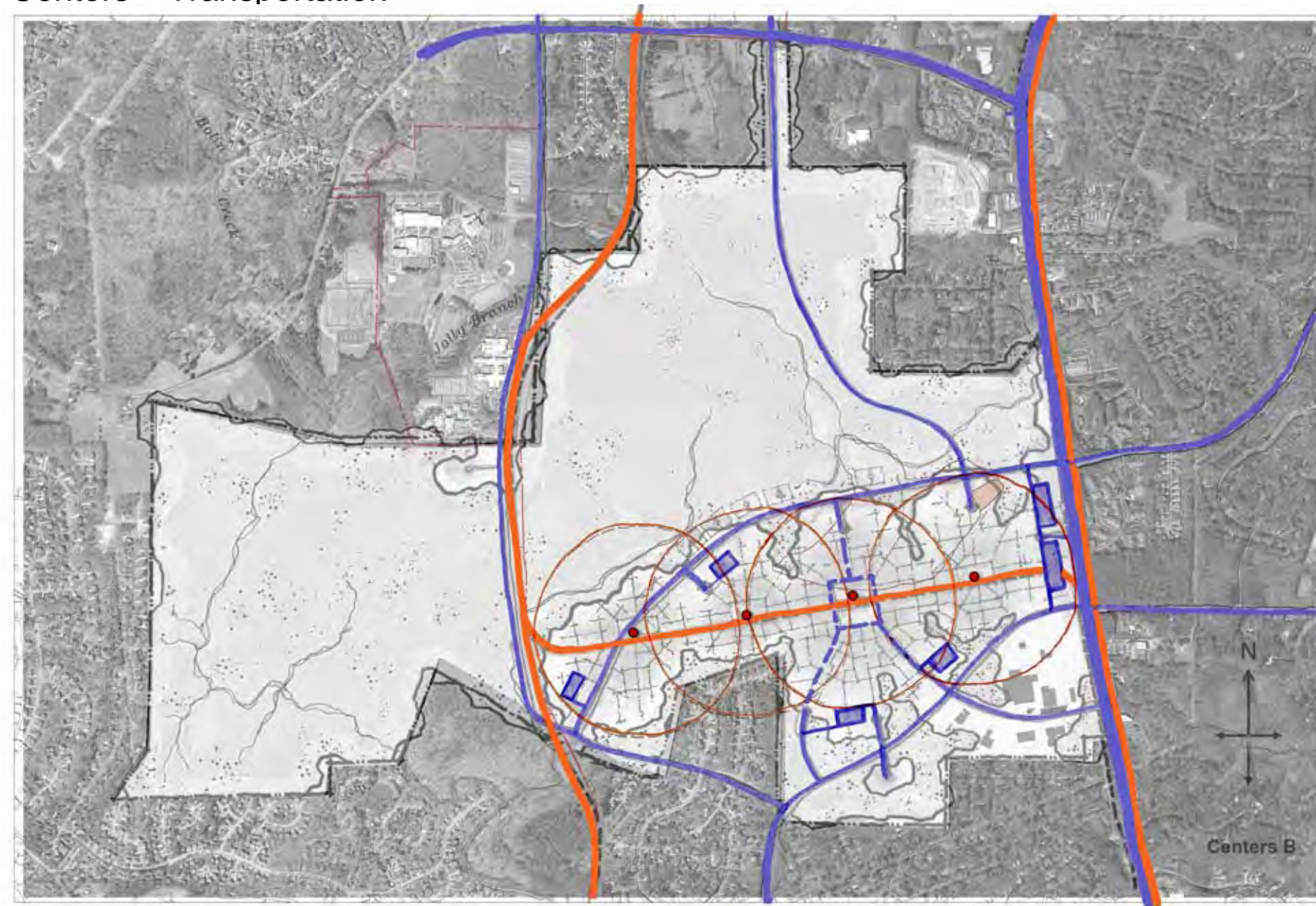
Pedestrian Circulation Network



Centers – Greenways / Bikes



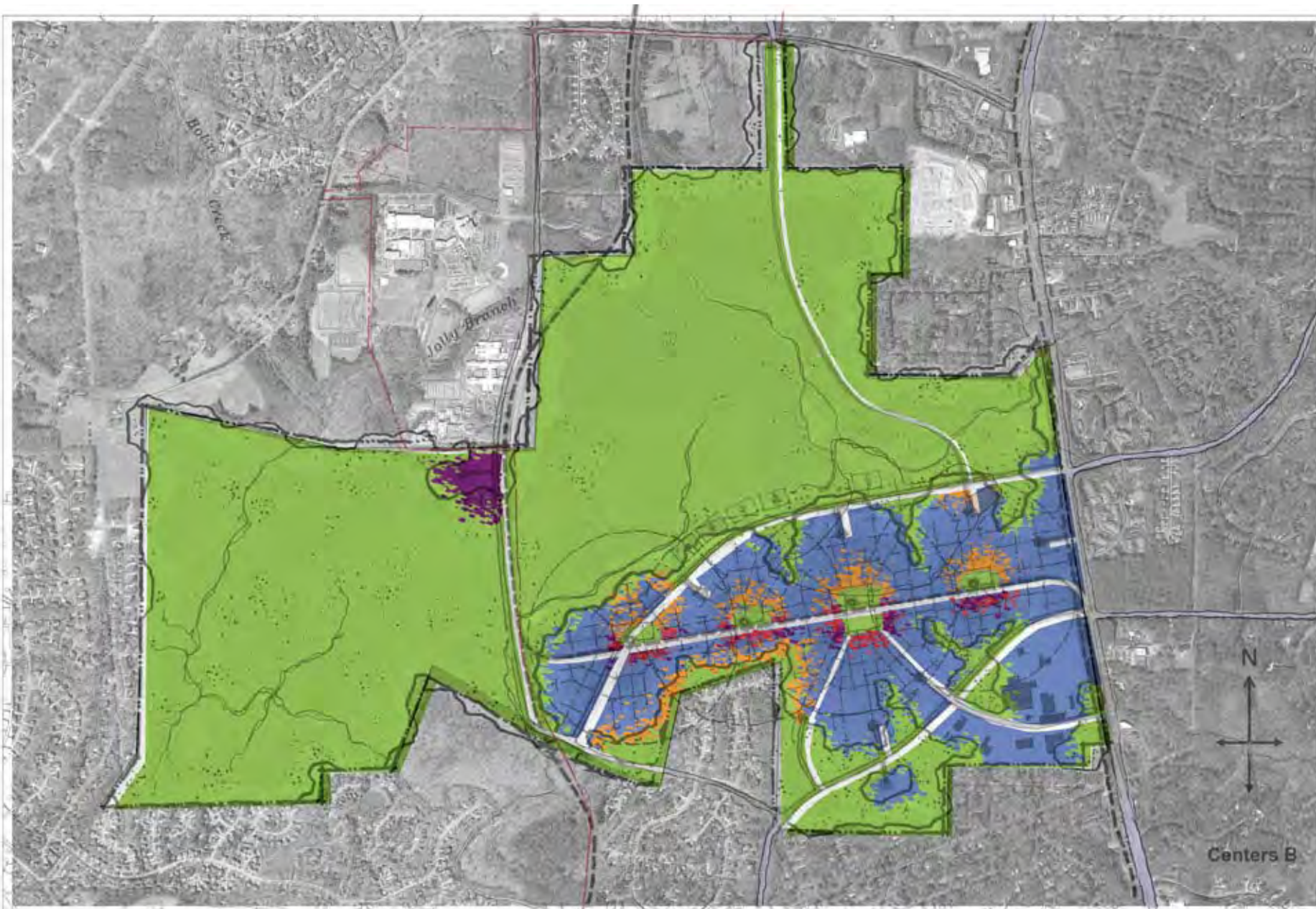
 Bike Facility  Bike Path  Greenway

Centers – Transportation



 Parking Facility  Transit Corridor  Transit Stop  Road Network

Centers – Land Use



Research/Institutional



Civic



Retail/Mixed

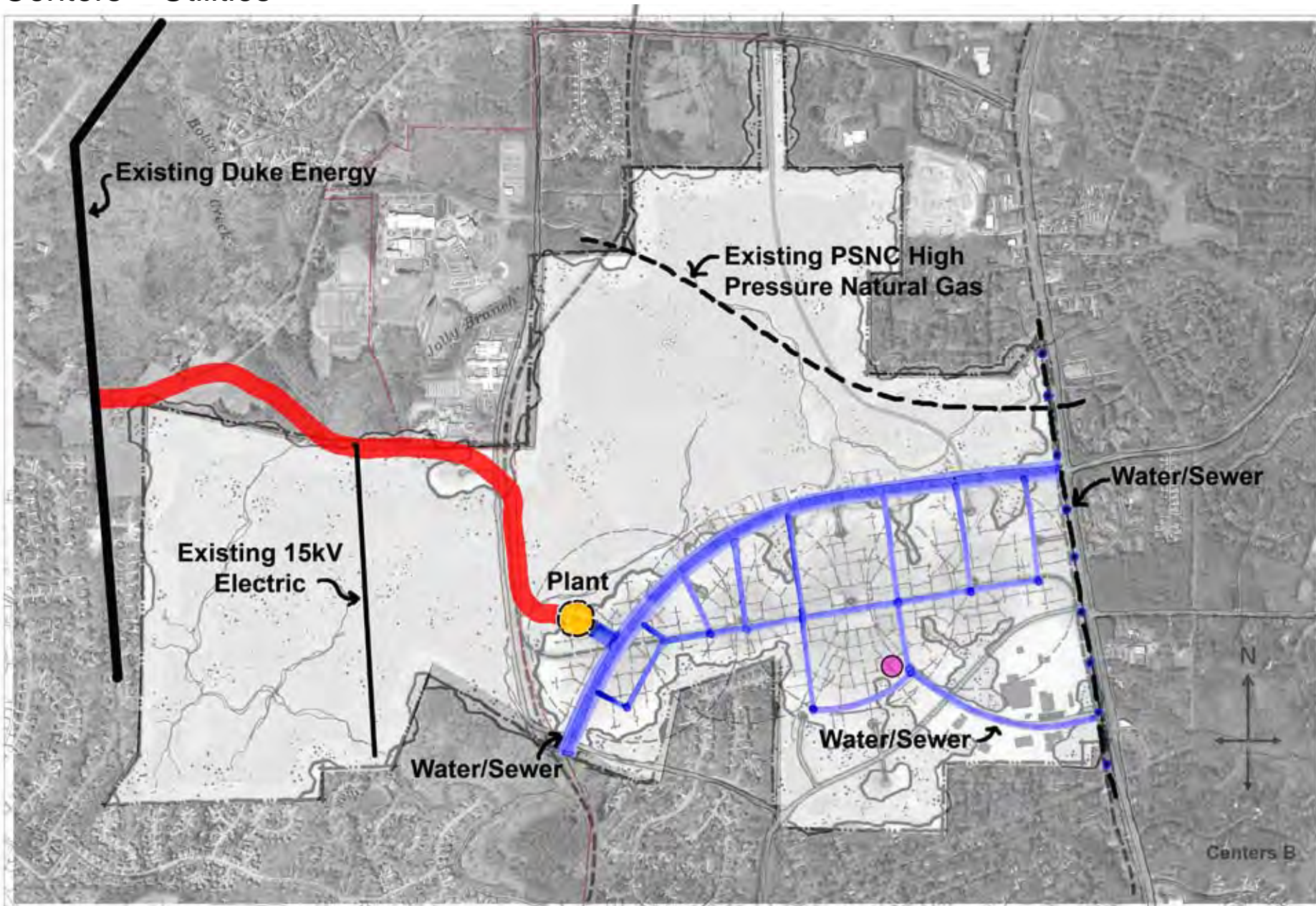


Open Space



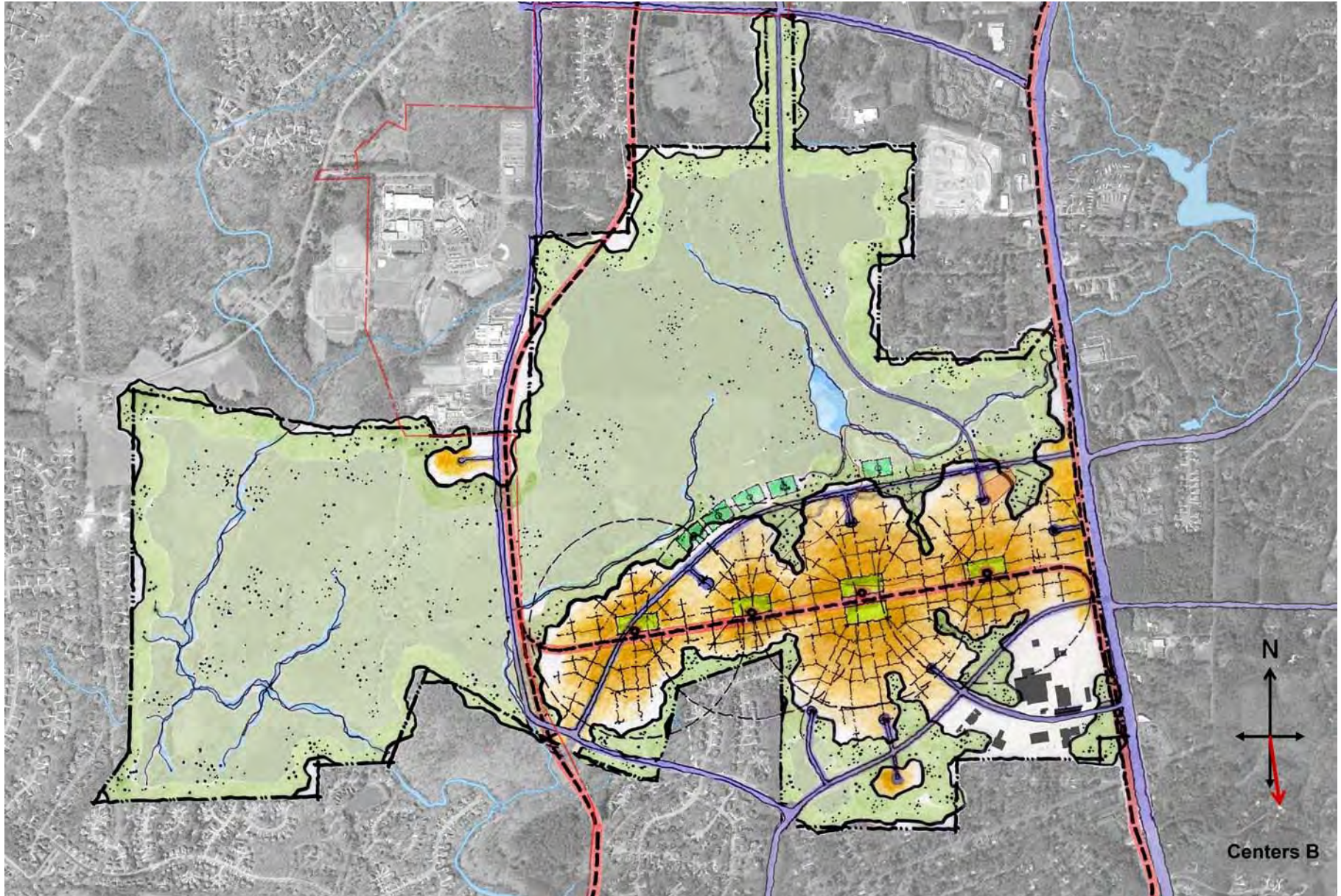
Residential

Centers – Utilities



Central Plant Duct Bank Early Phase Plant Utility Corridor * Need to site potential OWASA collection tank

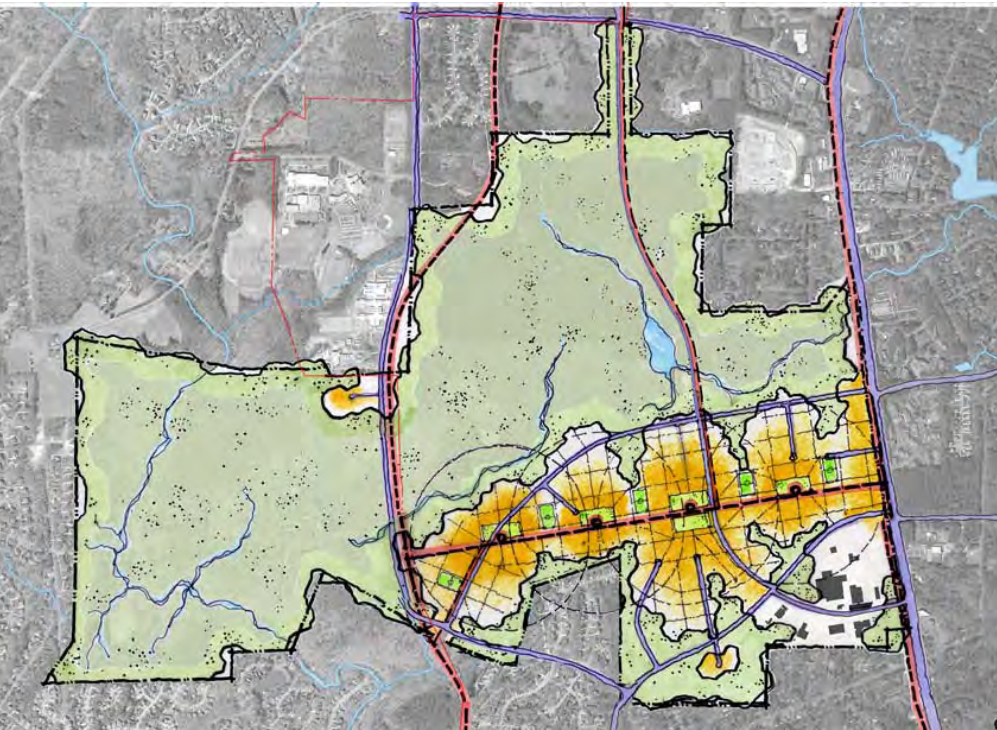
Centers





THE UNIVERSITY
of NORTH CAROLINA
at CHAPEL HILL

CAROLINA NORTH



Modified Centers

- Greater balance between pedestrian zones and access/ serviceability
- North-south connection from Estes to main east-west vehicular spine
- Stronger block structure defined within each "center"

Modified Centers

