

Carolina

The UNIVERSITY of NORTH CAROLINA at CHAPEL HILL



CAROLINA NORTH DESIGN FRAMEWORK

23 July 2008
Presentation to the
Board of Trustees

Affiliated Engineers, Inc.
Biohabitats Incorporated
Hoerr Schaudt Landscape Architects
Martin/Alexiou/Bryson, PLLC
Rummel, Klepper and Kahl, LLP
Stonebridge Associates, Inc.



Agenda

Carolina North Design Framework

- Purpose
- Campus-wide Issues
- Site Development Issues
- Future Scenes
- Phasing



Purpose

Support University Mission

- Facilitate new collaborations inside the University
- Create and strengthen strategic relationships outside the University
- Provide new space for research and education



THE UNIVERSITY
of NORTH CAROLINA
at CHAPEL HILL

CAROLINA NORTH DESIGN FRAMEWORK | JULY 2008

AYERS
SAINT
GROSS

Purpose

Carolina North will be a mixed-use academic campus that:

- Houses key academic programs;
- Attracts talent to the University;
- Enhances the University's delivery of world-class research, teaching, outreach, and service for the people of North Carolina;
- Contributes to economic development, locally and beyond; and
- Delivers a planned, sustainable development that can adapt the latest technologies.



THE UNIVERSITY
of NORTH CAROLINA
at CHAPEL HILL

CAROLINA NORTH DESIGN FRAMEWORK | JULY 2008

AYERS
SAINT
GROSS

Campus-wide Issues

- Design Context
- Sustainability Goals
- Design and Operations Performance
- Flexibility for Changing Needs
- Open Space Network



Campus-wide Issues

Design Context

- Character and Culture
- Landscape Dominant Setting
- Relationship between Open Space and Buildings
- Responsible Capacity

*We express our values
in what we build.*

— James Moeser
Chancellor 2000-2008



South Building
Photo by Dan Sears



THE UNIVERSITY
of NORTH CAROLINA
at CHAPEL HILL

CAROLINA NORTH DESIGN FRAMEWORK | JULY 2008



Campus-wide Issues

Sustainability Goals

- Carolina North will be a model of sustainable community
- American College and University Presidents Climate Commitment



Polk Place
Photo by Dan Sears



THE UNIVERSITY
of NORTH CAROLINA
at CHAPEL HILL

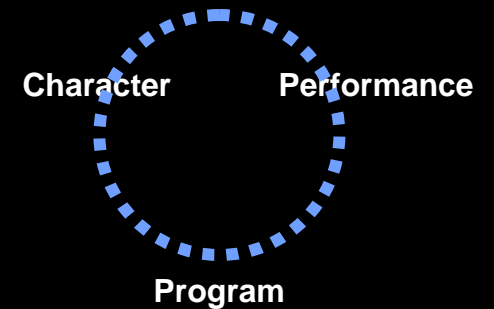
CAROLINA NORTH DESIGN FRAMEWORK | JULY 2008



Campus-wide Issues

Design and Operations Performance

- Respond to environment — climate, solar orientation
- Respect for natural setting
- Habitat
- Water
- Energy
- Transportation
- Service



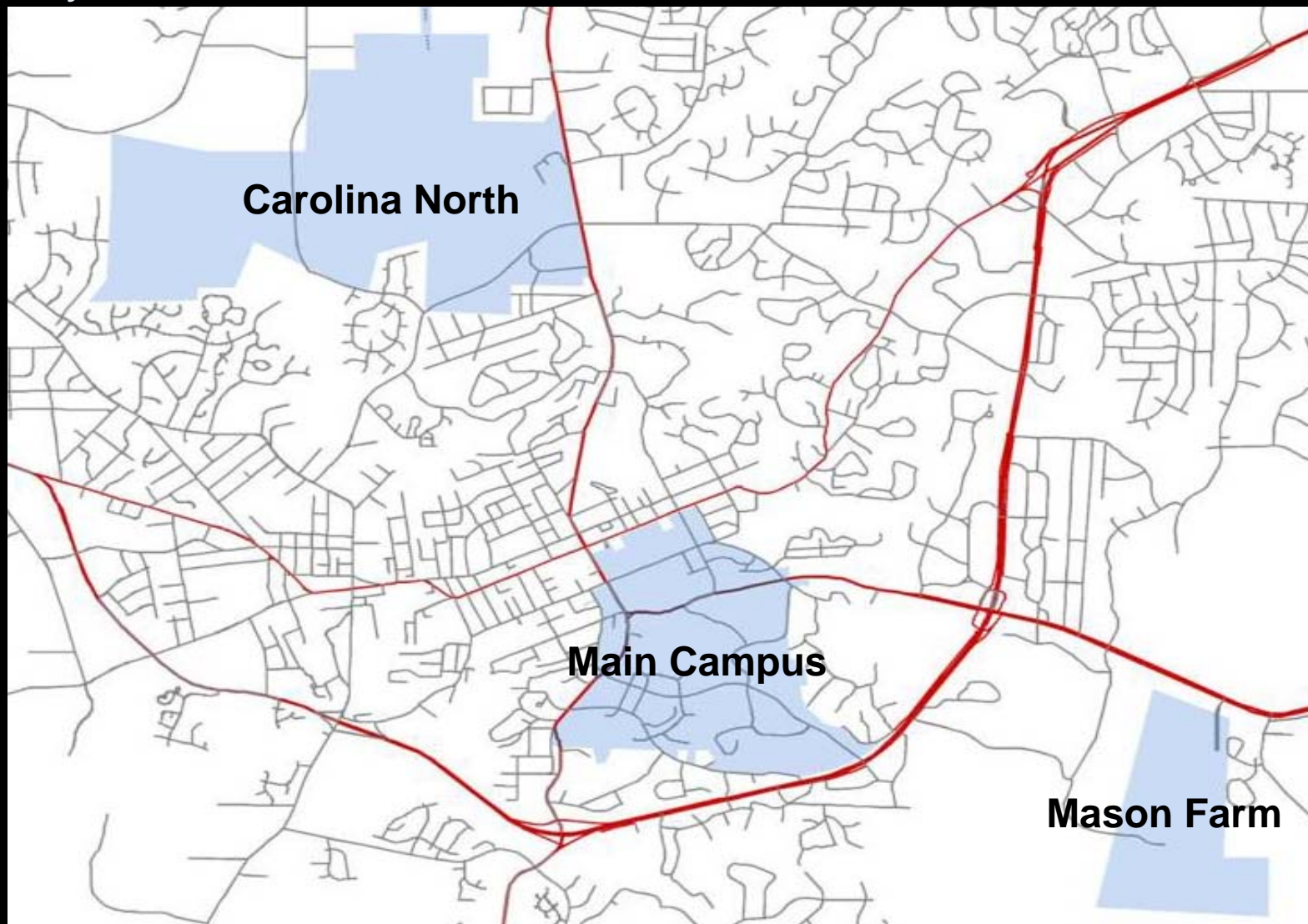
Campus-wide Issues

Flexibility For Changing Needs

- Site selection integrated with program planning
- Pedagogy
- Technology
- New disciplines
- Evolution of building use



Physical Context



THE UNIVERSITY
of NORTH CAROLINA
at CHAPEL HILL

CAROLINA NORTH DESIGN FRAMEWORK

JULY 2008

AYERS
SAINT
GROSS

Design Context - Site Topography



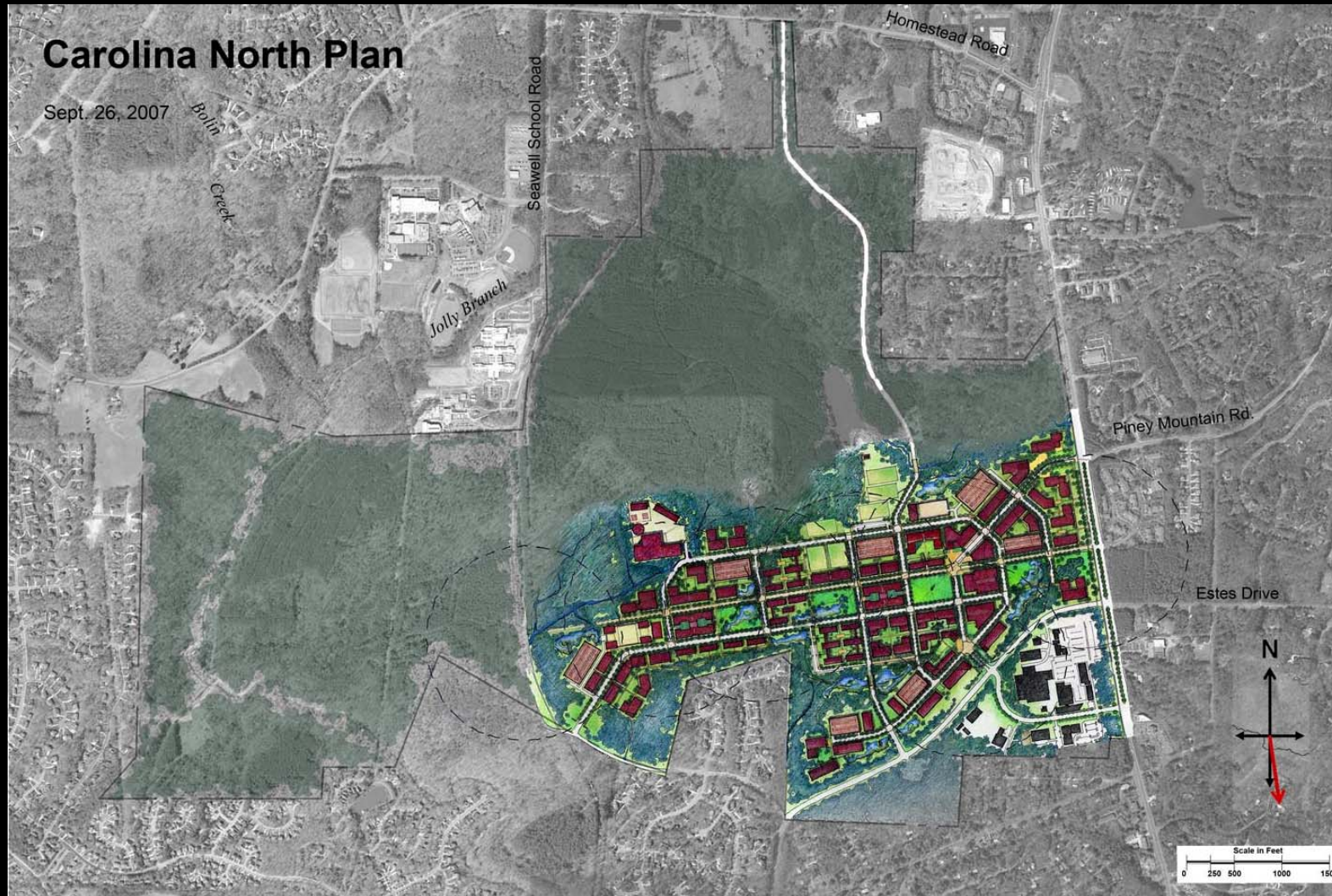
THE UNIVERSITY
of NORTH CAROLINA
at CHAPEL HILL

CAROLINA NORTH DESIGN FRAMEWORK

JULY 2008

AYERS
SAINT
GROSS

Design Context - 2007 Carolina North Plan

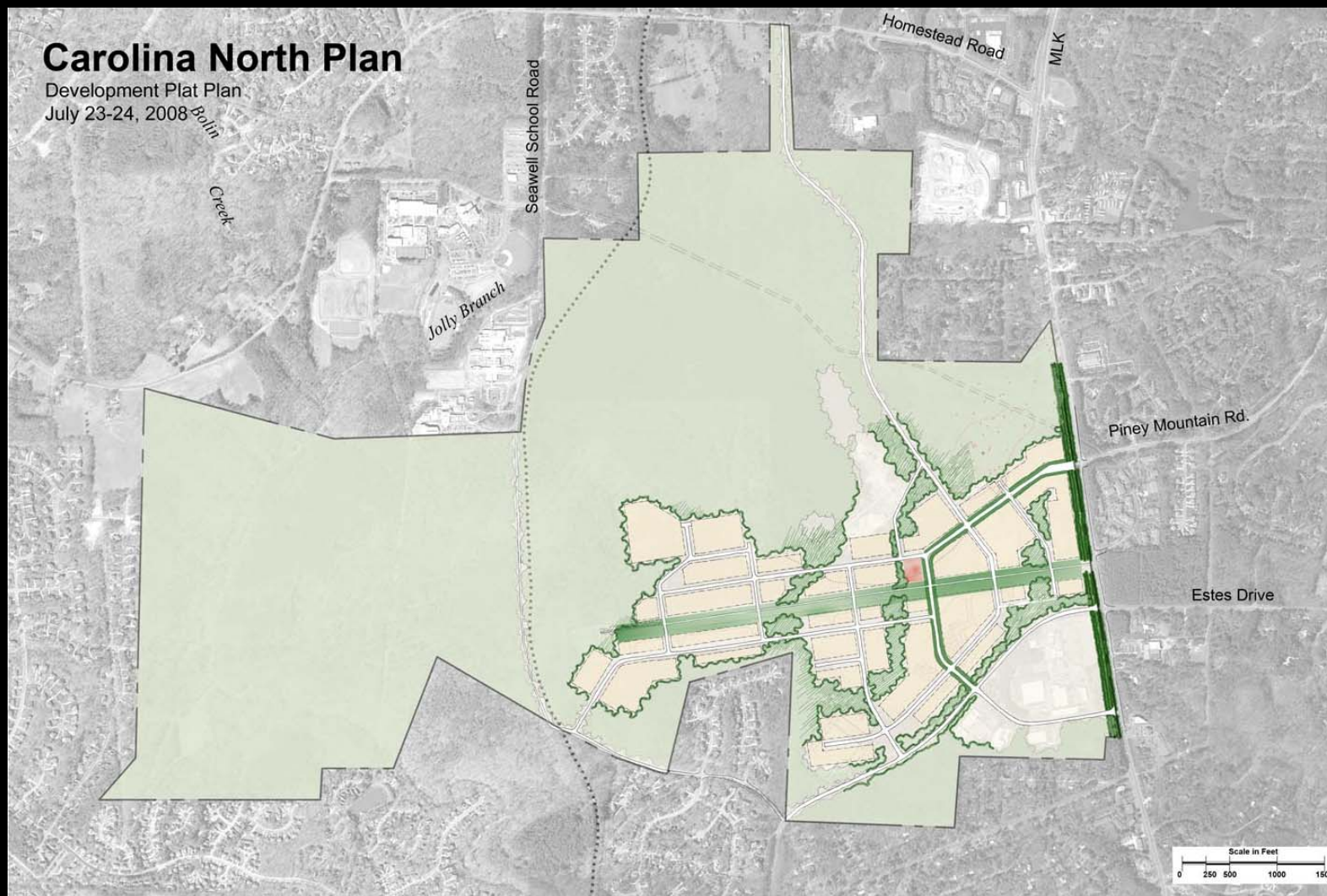


THE UNIVERSITY
of NORTH CAROLINA
at CHAPEL HILL

CAROLINA NORTH DESIGN FRAMEWORK | JULY 2008



Open Space Network

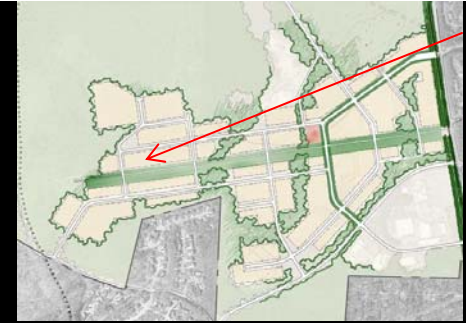


THE UNIVERSITY
of NORTH CAROLINA
at CHAPEL HILL

CAROLINA NORTH DESIGN FRAMEWORK | JULY 2008



Open Space Network - Existing Conditions



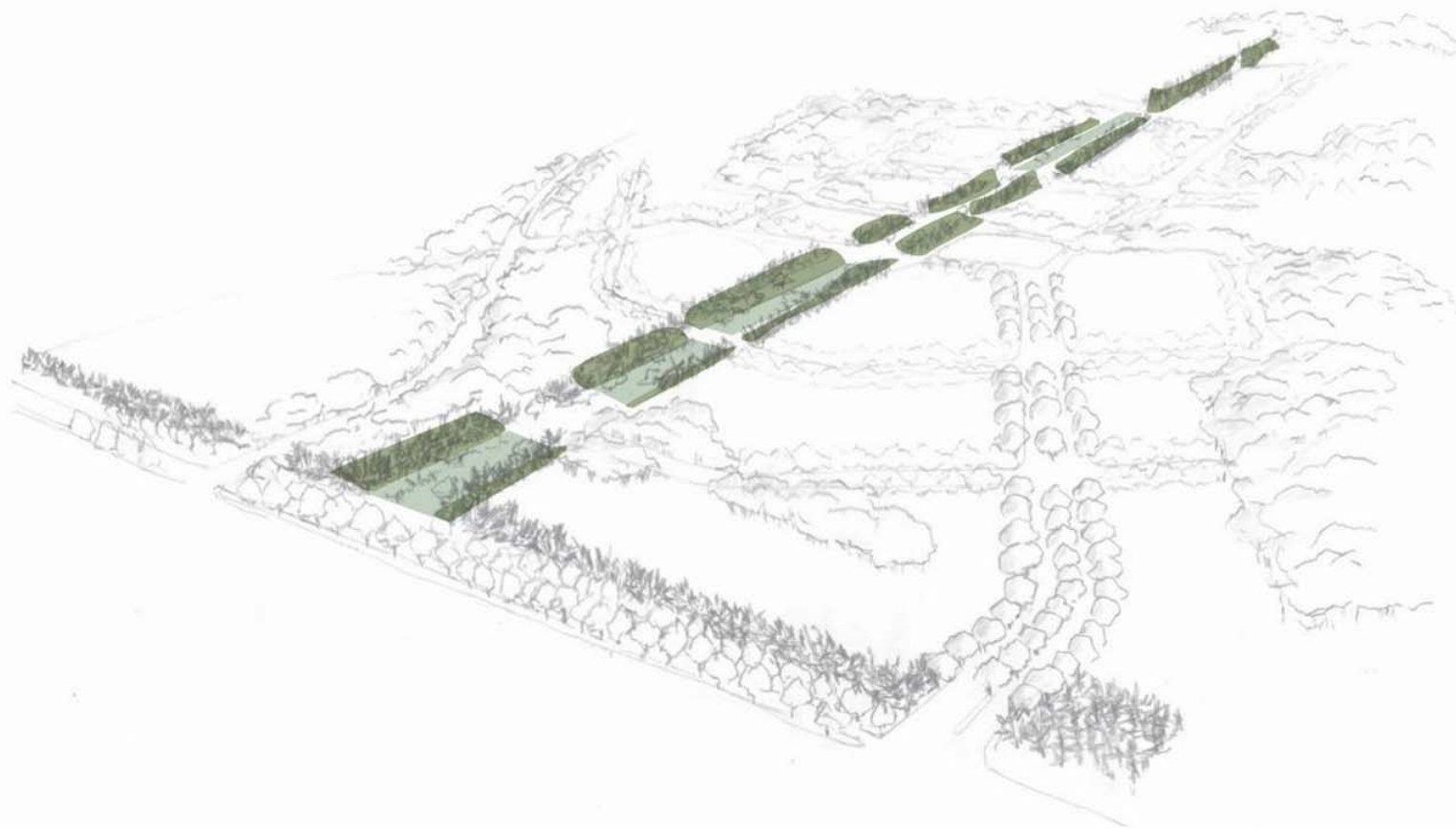
THE UNIVERSITY
of NORTH CAROLINA
at CHAPEL HILL

CAROLINA NORTH DESIGN FRAMEWORK

JULY 2008



Open Space Network – Monumental Vista



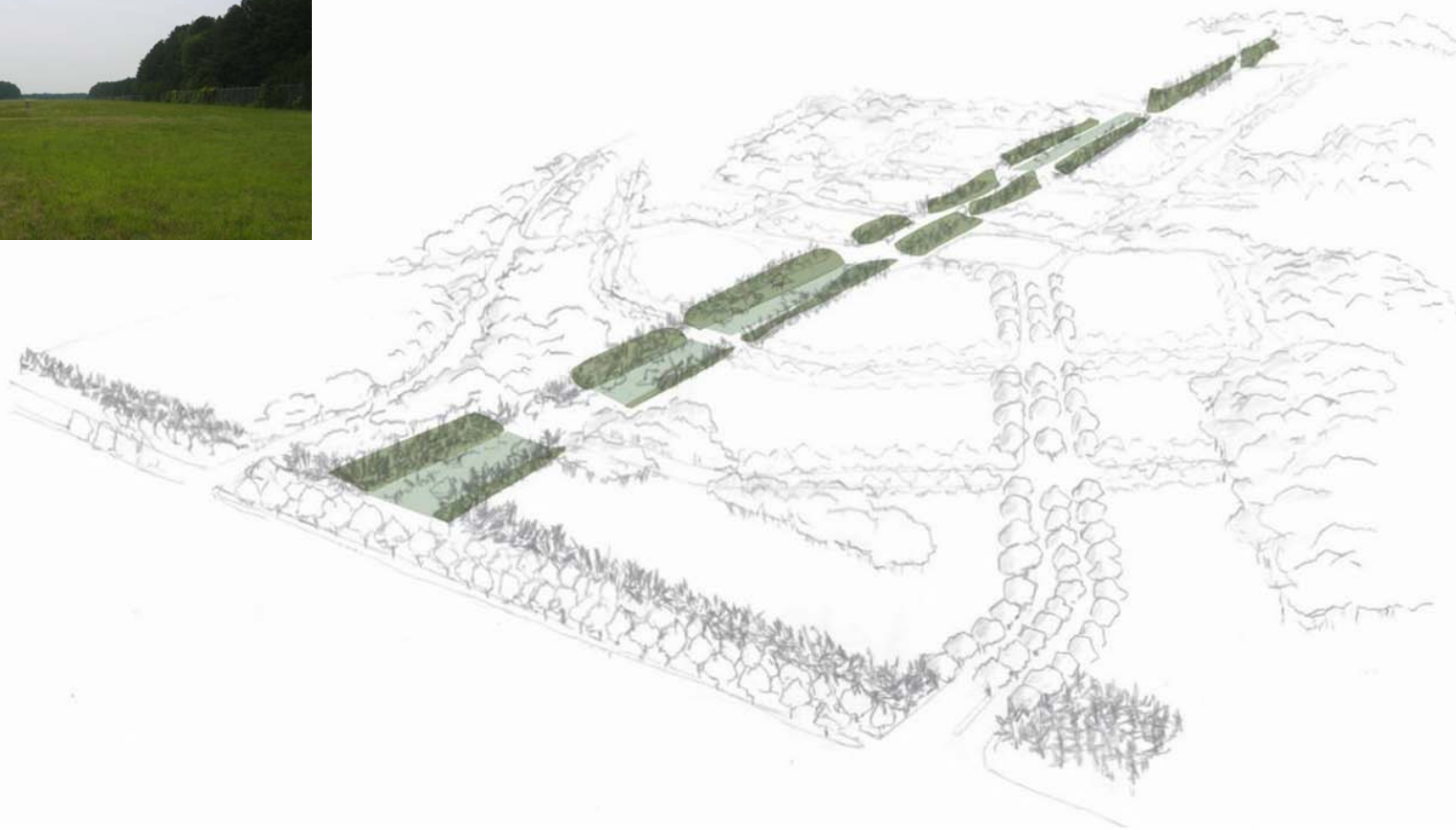
THE UNIVERSITY
of NORTH CAROLINA
at CHAPEL HILL

CAROLINA NORTH DESIGN FRAMEWORK

JULY 2008

AYERS
SAINT
GROSS

Open Space Network – Monumental Vista



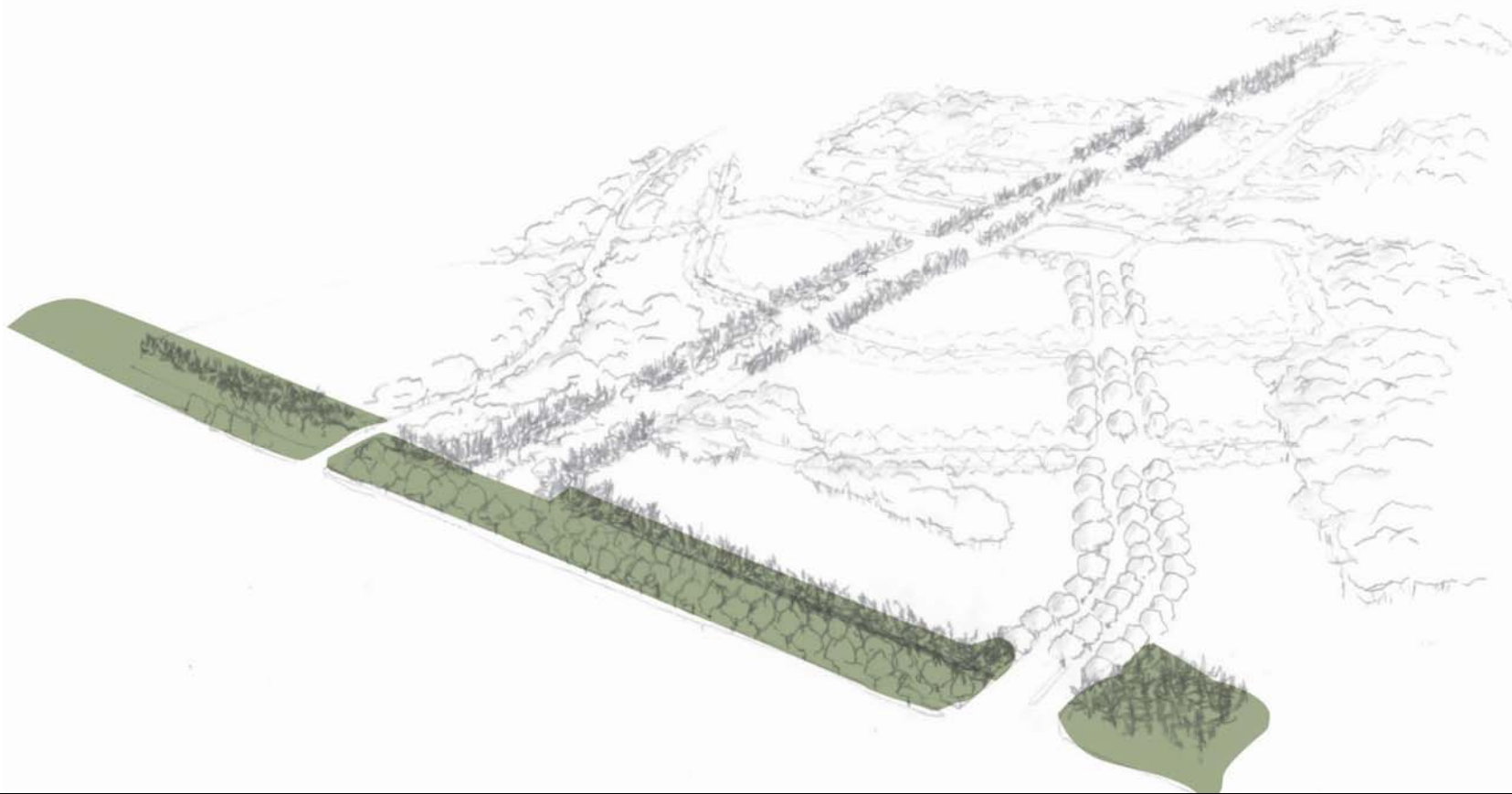
THE UNIVERSITY
of NORTH CAROLINA
at CHAPEL HILL

CAROLINA NORTH DESIGN FRAMEWORK

JULY 2008

AYERS
SAINT
GROSS

Open Space Network – Presence on Martin Luther King, Jr. Blvd.



THE UNIVERSITY
of NORTH CAROLINA
at CHAPEL HILL

CAROLINA NORTH DESIGN FRAMEWORK

JULY 2008

AYERS
SAINT
GROSS

Open Space Network – Integrates Natural Landscape



THE UNIVERSITY
of NORTH CAROLINA
at CHAPEL HILL

CAROLINA NORTH DESIGN FRAMEWORK

JULY 2008

AYERS
SAINT
GROSS

Open Space Network – Brings in the Community



THE UNIVERSITY
of NORTH CAROLINA
at CHAPEL HILL

CAROLINA NORTH DESIGN FRAMEWORK

JULY 2008

AYERS
SAINT
GROSS

Open Space Network – Monumental Vista



THE UNIVERSITY
of NORTH CAROLINA
at CHAPEL HILL

CAROLINA NORTH DESIGN FRAMEWORK | JULY 2008

AYERS
SAINT
GROSS

Open Space Network – Presence on Martin Luther King, Jr. Blvd.



THE UNIVERSITY
of NORTH CAROLINA
at CHAPEL HILL

CAROLINA NORTH DESIGN FRAMEWORK | JULY 2008

AYERS
SAINT
GROSS

Open Space Network – Integrates Natural Landscape



THE UNIVERSITY
of NORTH CAROLINA
at CHAPEL HILL

CAROLINA NORTH DESIGN FRAMEWORK | JULY 2008

AYERS
SAINT
GROSS

Open Space Network – Brings in the Community



THE UNIVERSITY
of NORTH CAROLINA
at CHAPEL HILL

CAROLINA NORTH DESIGN FRAMEWORK | JULY 2008

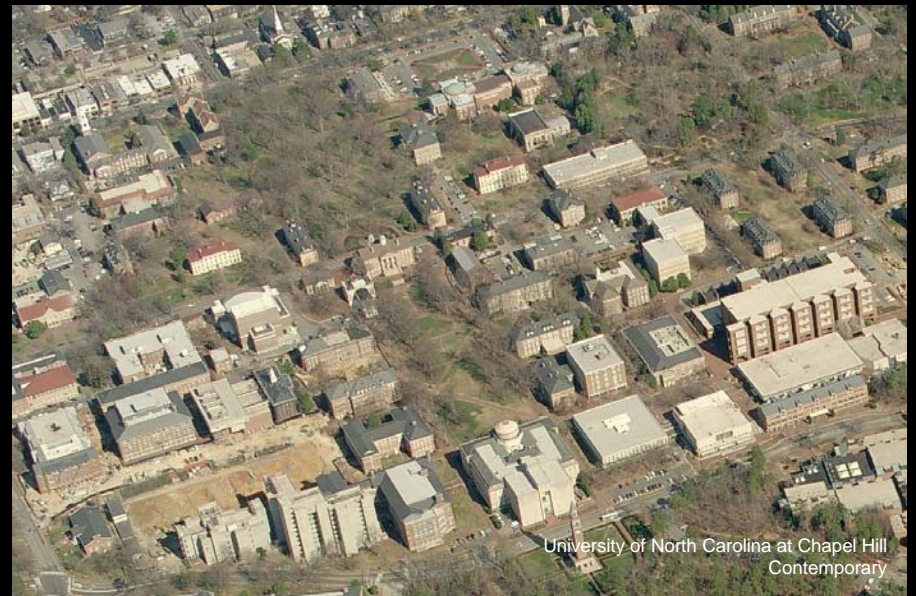
AYERS
SAINT
GROSS

Site Development Issues

Design Context

Form

Composition



THE UNIVERSITY
of NORTH CAROLINA
at CHAPEL HILL

CAROLINA NORTH DESIGN FRAMEWORK | JULY 2008

AYERS
SAINT
GROSS

Design Context

- Performance based, not prescriptive
- Build durably for long life; 50 year minimum
- Balance innovation and practicality
- Provide flexibility for renovation and reuse
- Variety of development strategies



Design Context

- Human scale – how the building meets the ground
- Composition – how the building turns the corner
- Massing - how the building meets the sky
- Movement Systems – how people move around



Site Development Issues - Form

Cultural Influences

Human Scale

- Active use at street level – active, visible uses with multiple entrances
- Clarity of entry – open, inviting, well-lighted
- Visual interest
- Shelter and safety – awning, colonnades, visibility
- Diverse gathering and social spaces



Site Development Issues - Form

Massing

- Geometry of plan – length and width
- Height – varies in response to context, program, site capacity
- Setbacks - how the building meets the ground
- Stepbacks – how the wall is shaped vertically
- Geometry of roof form and cornice



Site Development Issues – Composition

Proportion

- Overall
- Individual elements

Materials

- Local heritage
- Performance

Component Elements

- Legibility
- Balance innovation and practicality
- Detail



Tomkins Chiller Plant



Stone Center
Photo by Dan Sears



Animation View Key Plan



THE UNIVERSITY
of NORTH CAROLINA
at CHAPEL HILL

CAROLINA NORTH DESIGN FRAMEWORK

JULY 2008

AYERS
SAINT
GROSS



THE UNIVERSITY
of NORTH CAROLINA
at CHAPEL HILL

CAROLINA NORTH DESIGN FRAMEWORK

JULY 2008



Phasing - Development Plat Plan



THE UNIVERSITY
of NORTH CAROLINA
at CHAPEL HILL

CAROLINA NORTH DESIGN FRAMEWORK

JULY 2008

AYERS
SAINT
GROSS

Phasing - Illustrative Fifty-year Development Plan



THE UNIVERSITY
of NORTH CAROLINA
at CHAPEL HILL

CAROLINA NORTH DESIGN FRAMEWORK | JULY 2008

AYERS
SAINT
GROSS

Phasing – Five-year Development Plan



THE UNIVERSITY
of NORTH CAROLINA
at CHAPEL HILL

CAROLINA NORTH DESIGN FRAMEWORK

JULY 2008

AYERS
SAINT
GROSS

Phasing – Fifteen-year Development Plan



THE UNIVERSITY
of NORTH CAROLINA
at CHAPEL HILL

CAROLINA NORTH DESIGN FRAMEWORK

JULY 2008

AYERS
SAINT
GROSS

Discussion



THE UNIVERSITY
of NORTH CAROLINA
at CHAPEL HILL

CAROLINA NORTH DESIGN FRAMEWORK | JULY 2008

AYERS
SAINT
GROSS