



Community Meeting

April 26, 2007

GRID

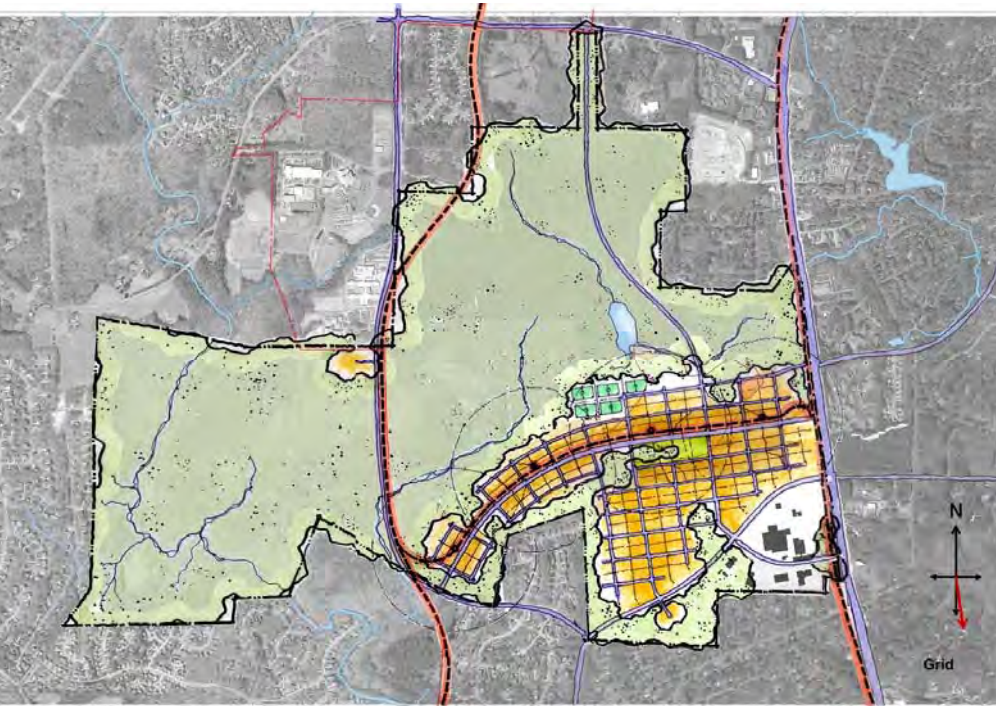
CAROLINA NORTH



THE UNIVERSITY
of NORTH CAROLINA
at CHAPEL HILL



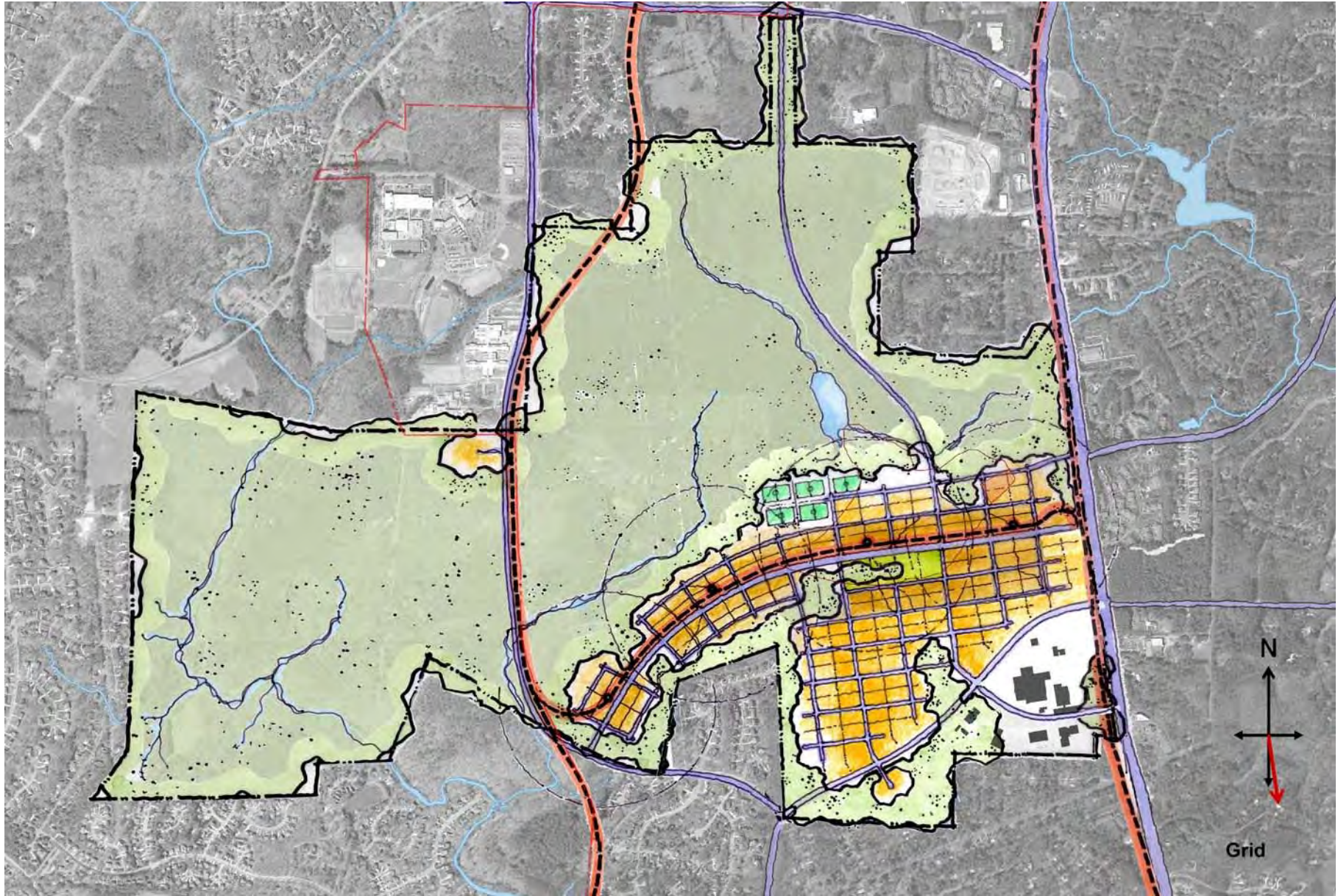
CAROLINA NORTH



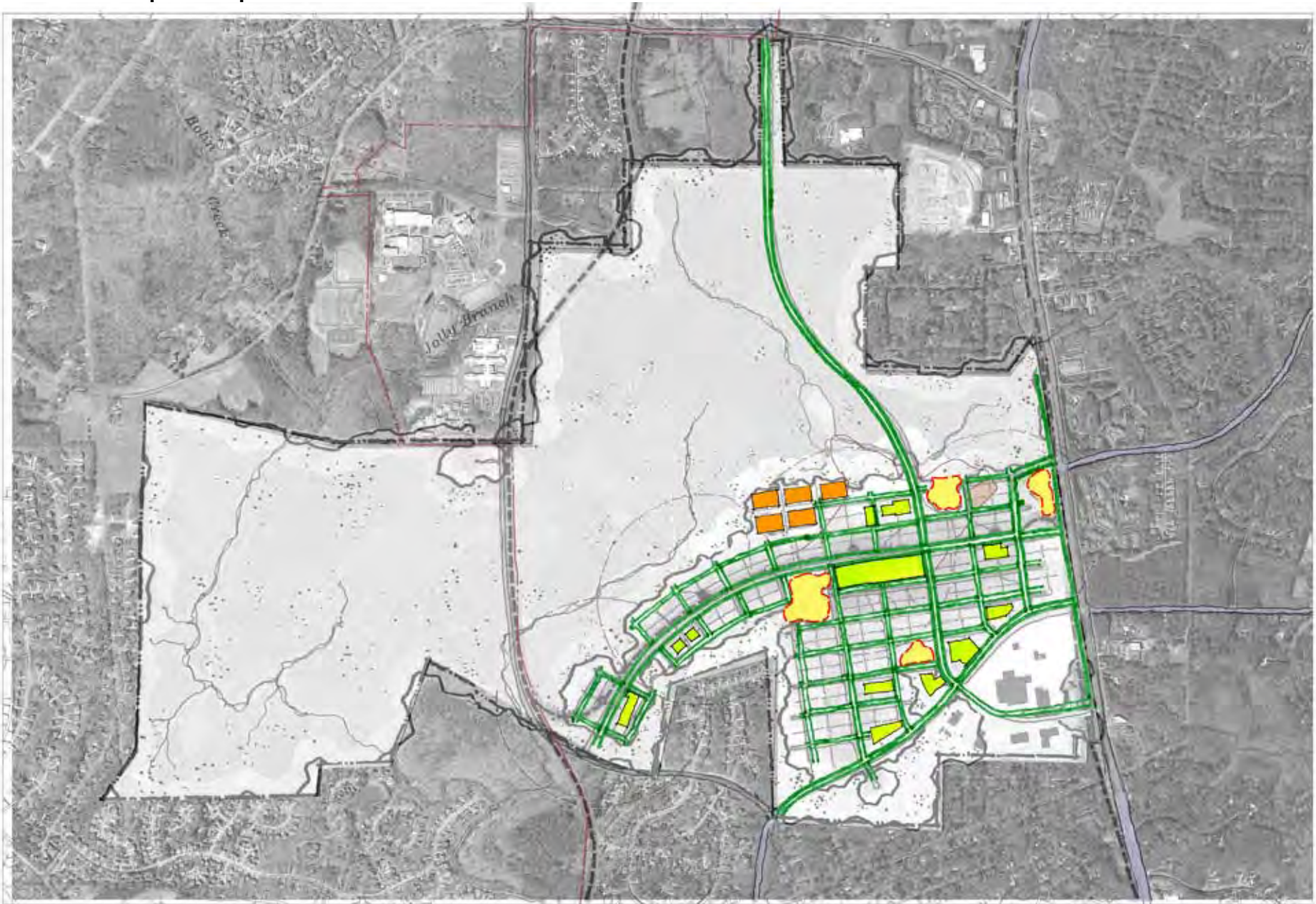
Grid

- Dense, compact development on regular blocks
- Large open area
- Transit through the center of the development; street shared with cars
- Integrated parking on most blocks
- Mixed-Use within buildings and within blocks
- North-South Road connection east of Crow Branch
- Majority development within 1,000 ft of transit corridor

Grid Scheme



Grid – Open Space



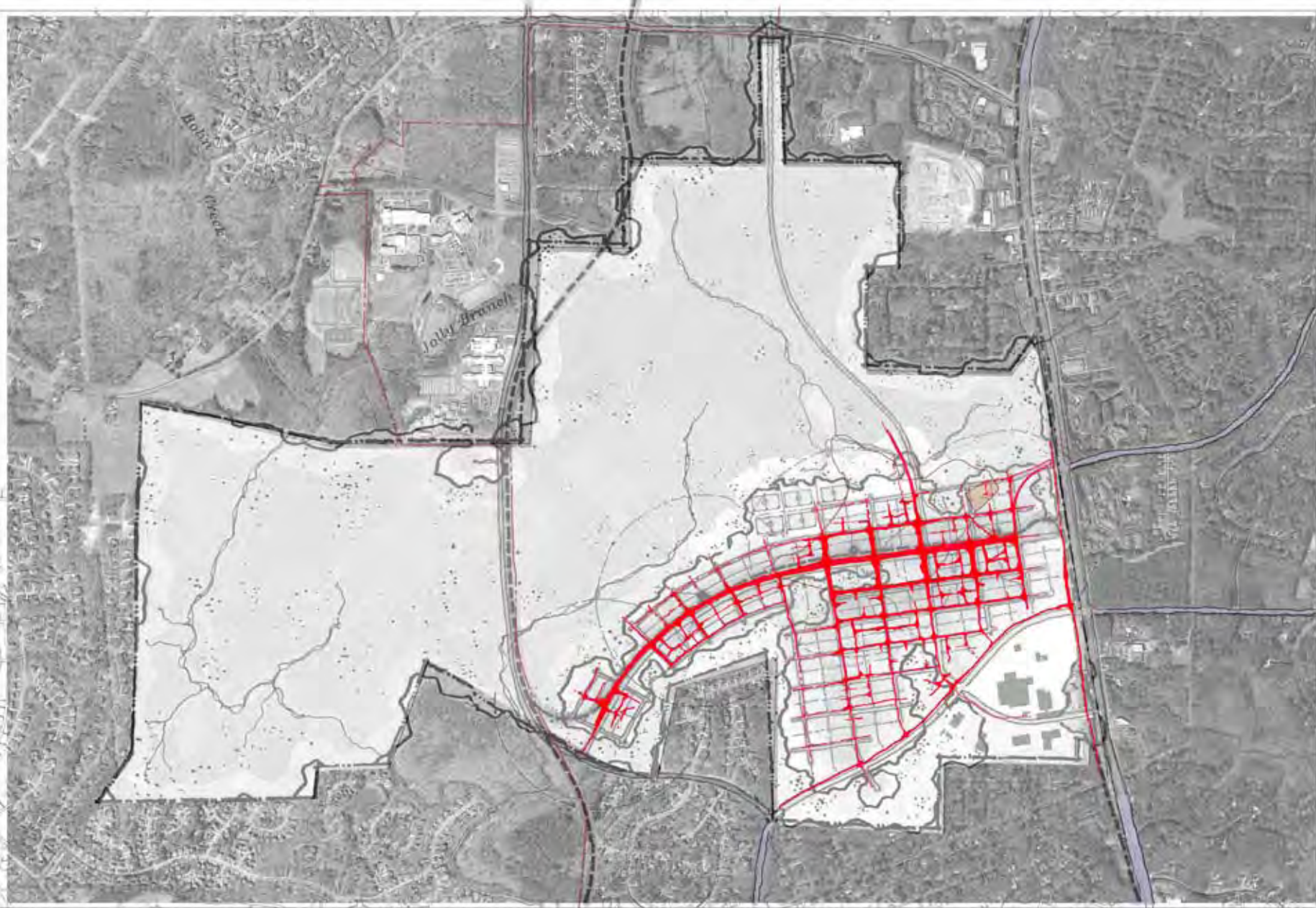
 Working Landscape

 Streetscape

 Greens and Parks

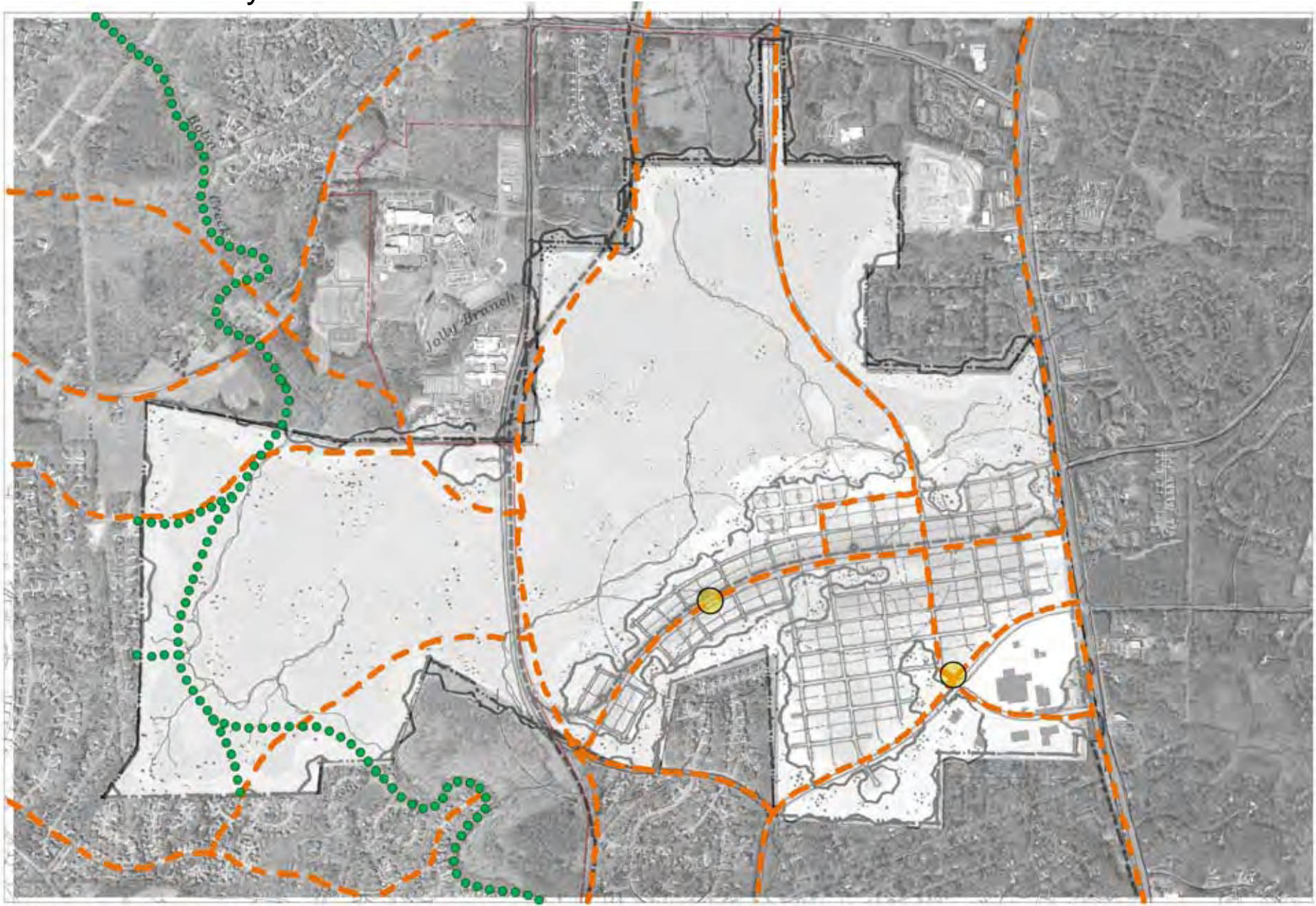
 Recreation Fields

Grid – Pedestrian Circulation



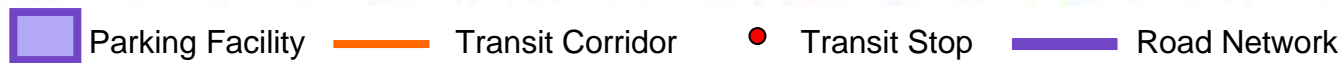
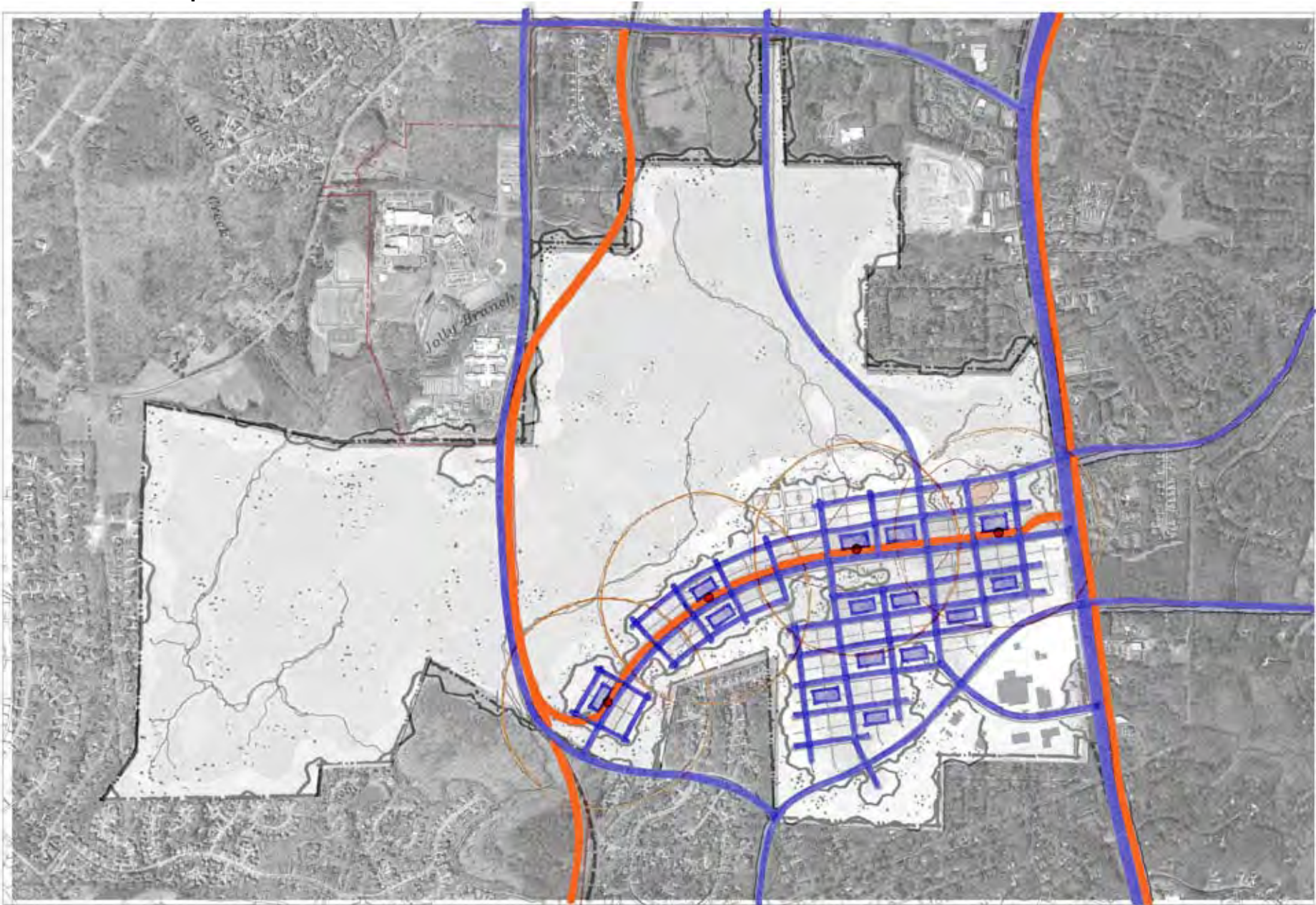
Pedestrian Circulation Network

Grid – Greenways / Bikes

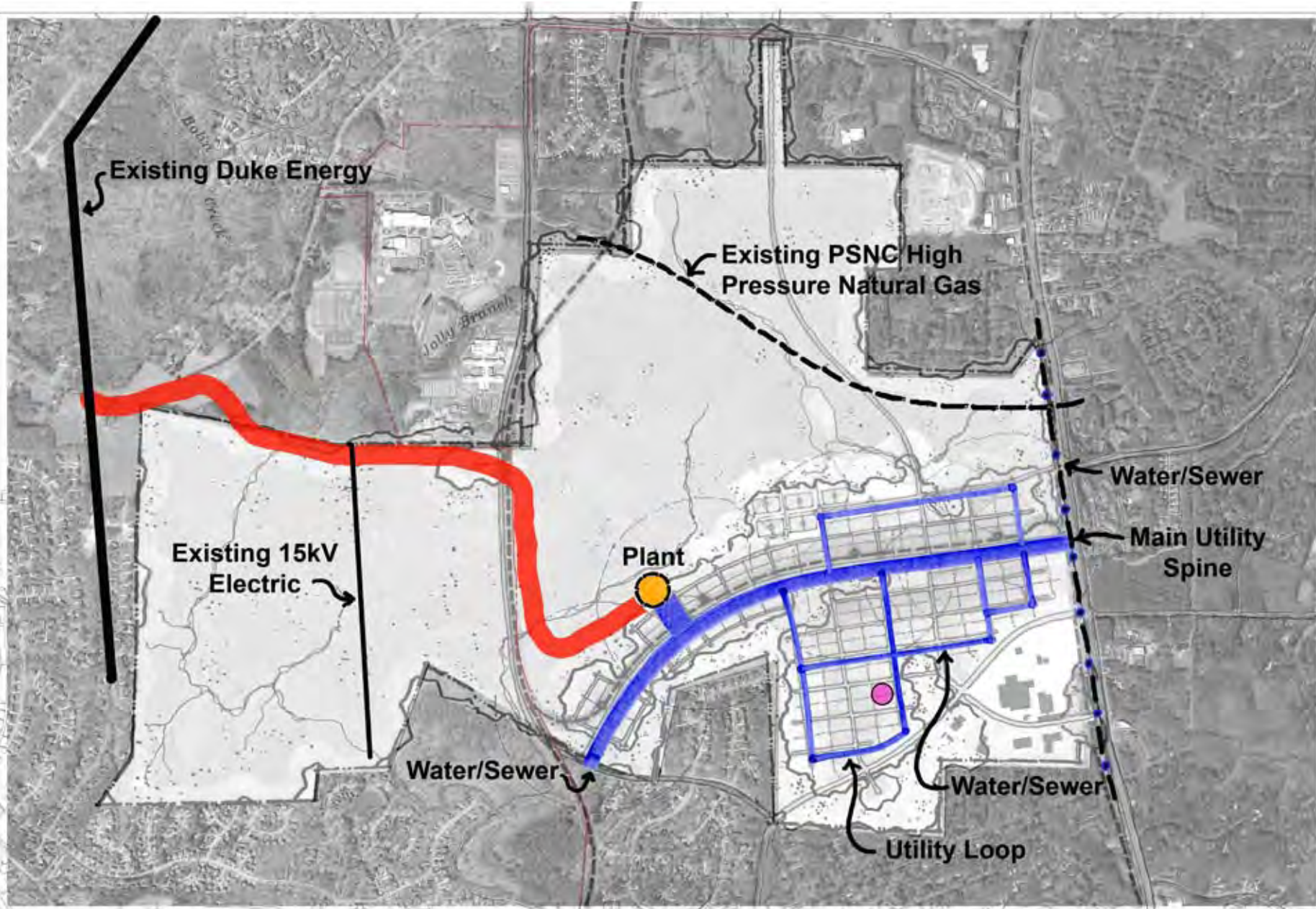


 Bike Facility  Bike Path  Greenway

Grid – Transportation



Grid – Utilities



Central Plant



Duct Bank



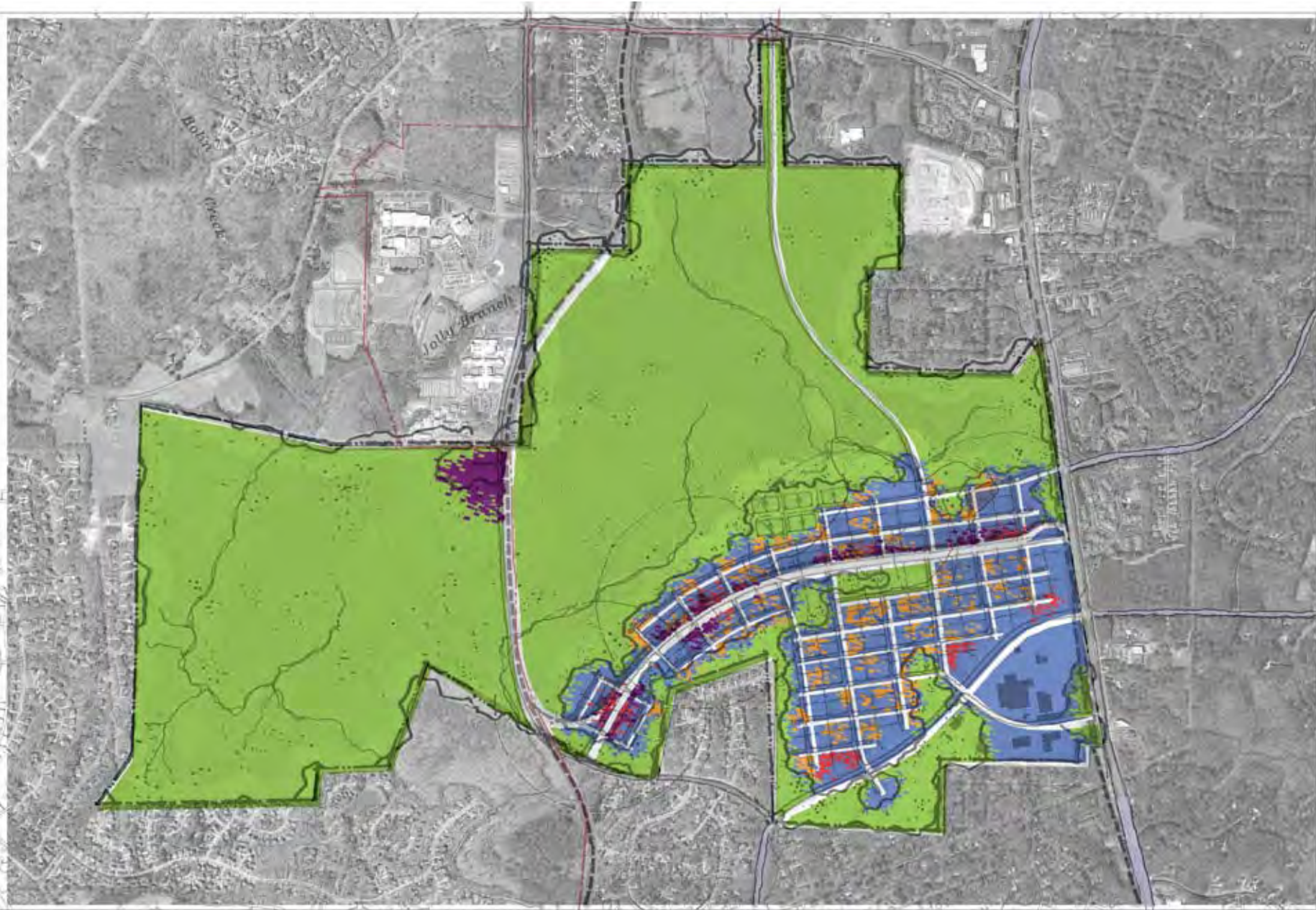
Early Phase Plant



Utility Corridor

* Need to site potential OWASA collection tank

Grid - Land Use



Research/Institutional



Civic



Retail/Mixed

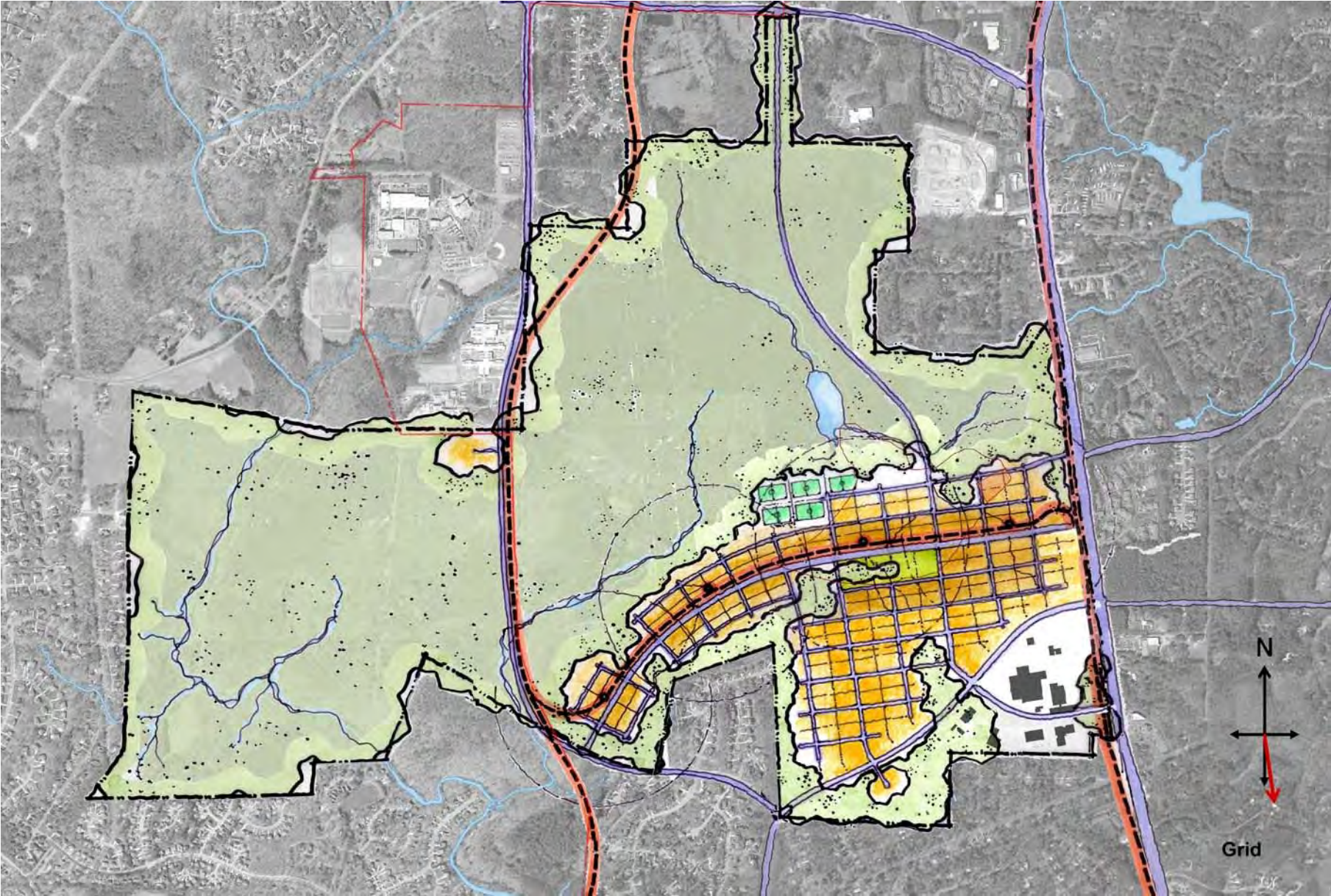


Open Space



Residential

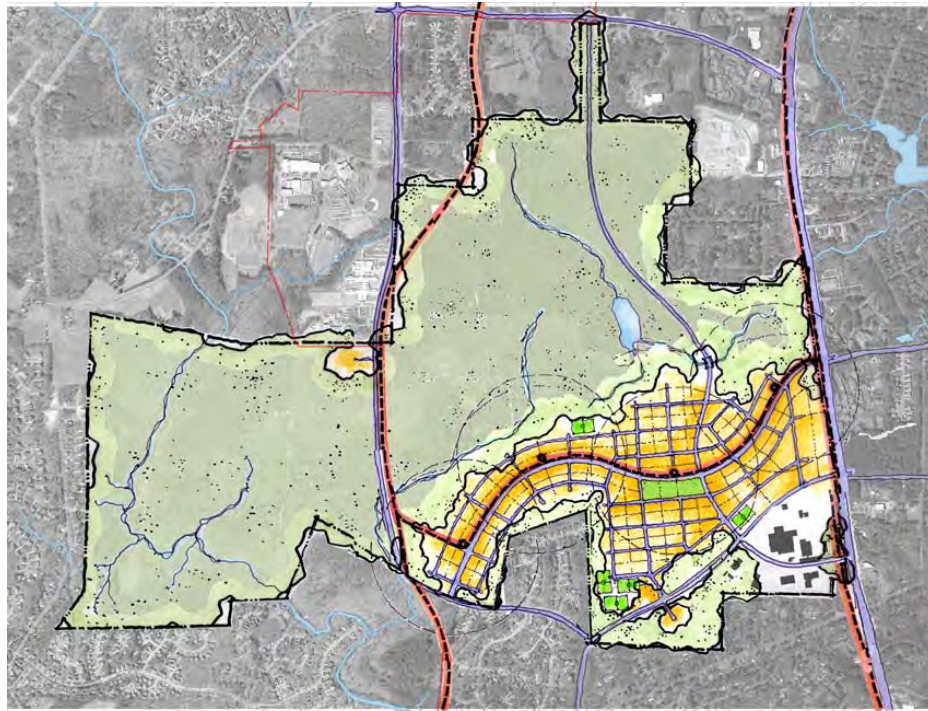
Grid Scheme





THE UNIVERSITY
of NORTH CAROLINA
at CHAPEL HILL

CAROLINA NORTH



Modified Grid

- Modified central road and transit corridor
- Softer "grid" layout
- Clustered recreation fields

