



## Community Meeting

April 26, 2007  
INTERWOVEN

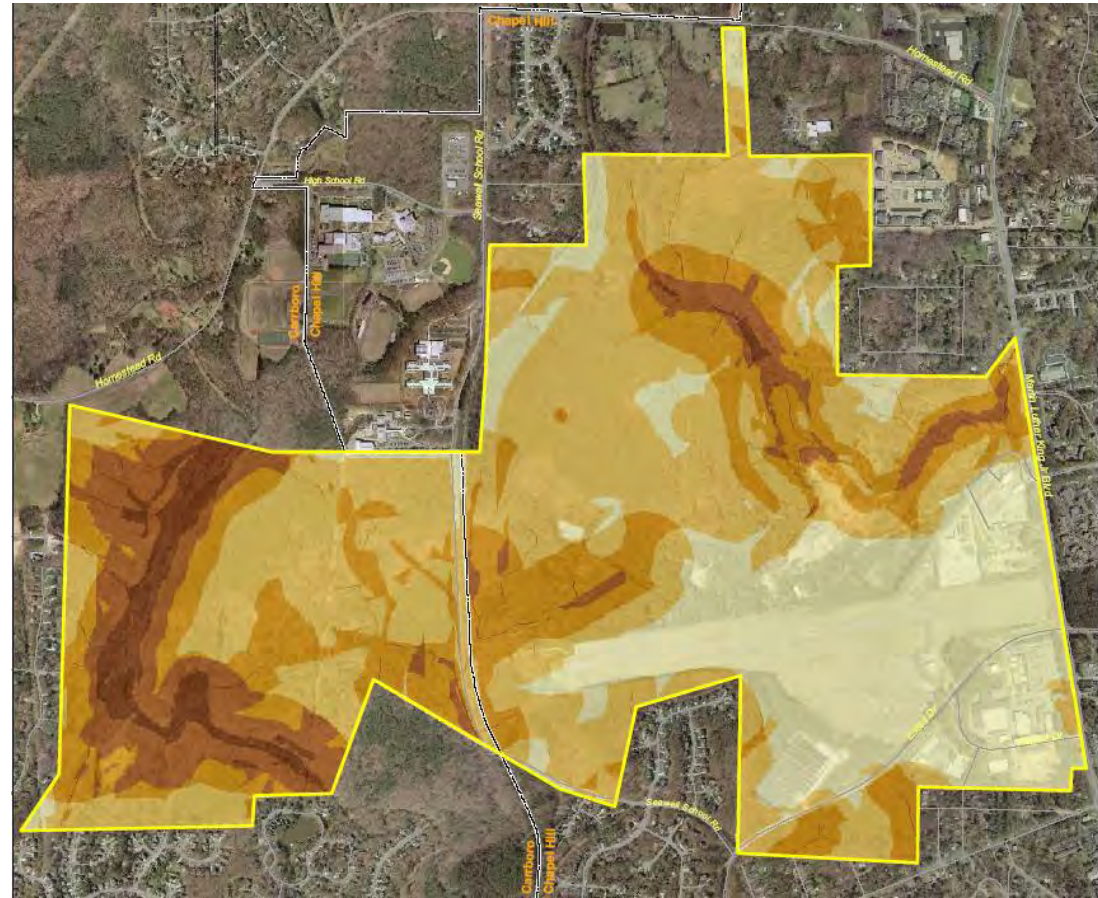
# CAROLINA NORTH



THE UNIVERSITY  
*of* NORTH CAROLINA  
*at* CHAPEL HILL



- Streams
- Wetlands
- Groundwater
- Geomorphology
- Vegetation
- Landscape morphology
- Wildlife habitat
- Culture and history



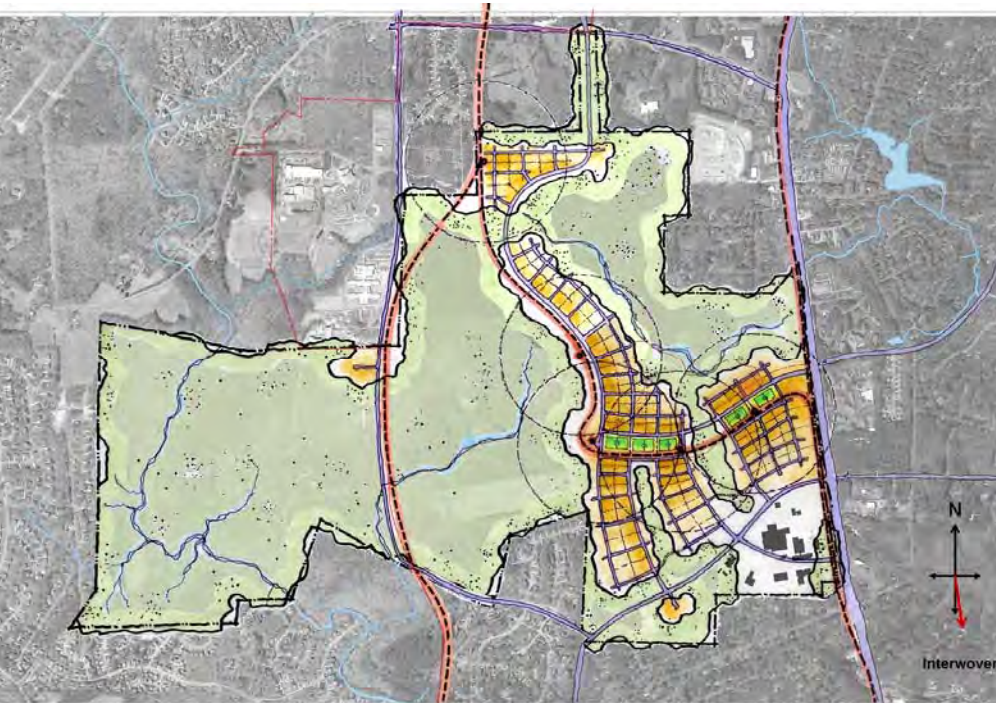
Draft Ecological Assessment Composite Metric – Suitability Analysis  
Biohabitats, Inc., March 2007





THE UNIVERSITY  
of NORTH CAROLINA  
at CHAPEL HILL

# CAROLINA NORTH

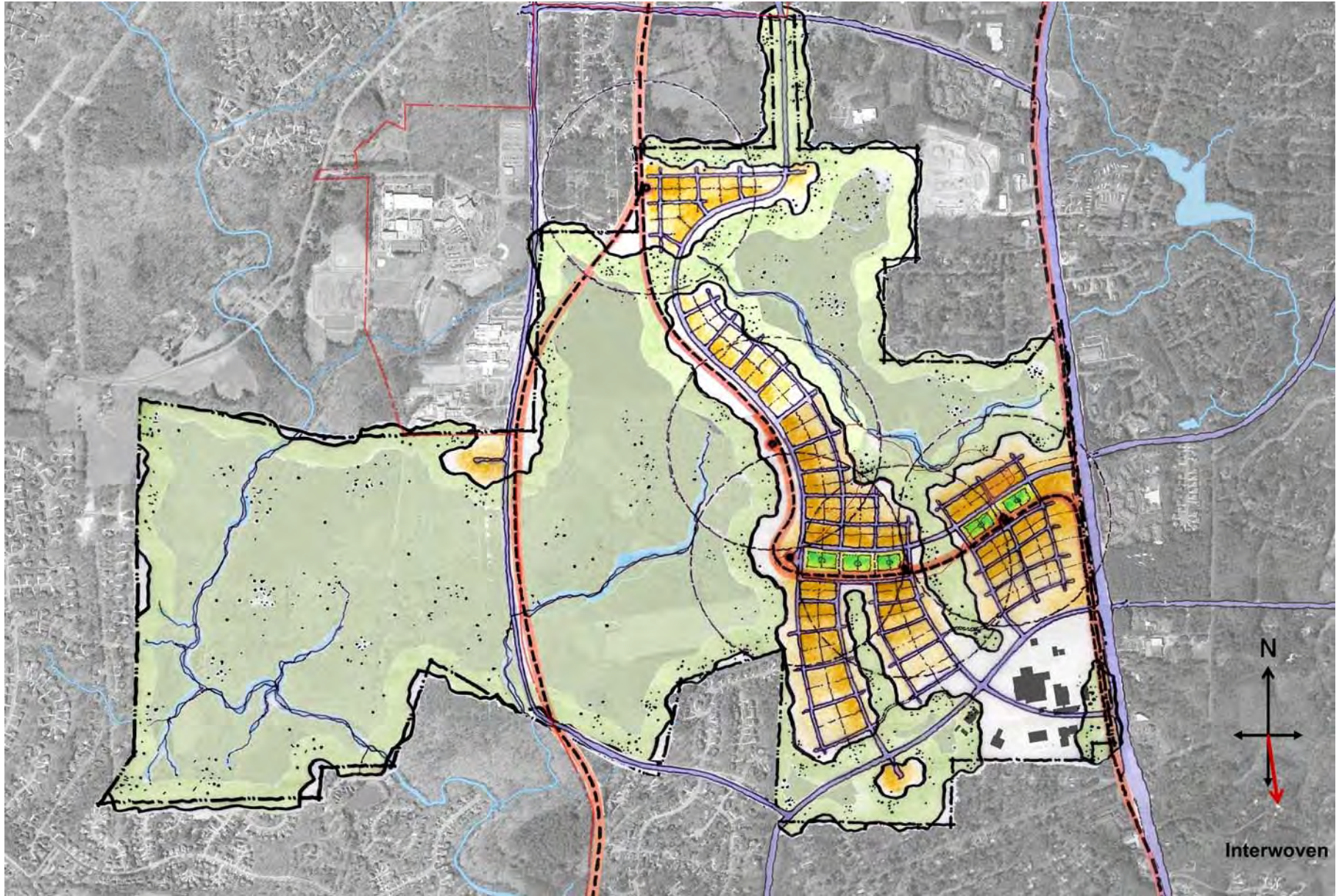


## Interwoven

- Compact development integrated with large open or natural areas
- Development is concentrated in the Crow Branch watershed; integrated restoration strategy
- Transit through the center of the development; street shared with cars
- Reservoirs of parking spaced through development
- Land use both separated and connected by habitat areas
- Majority development within 1,000 ft of transit corridor

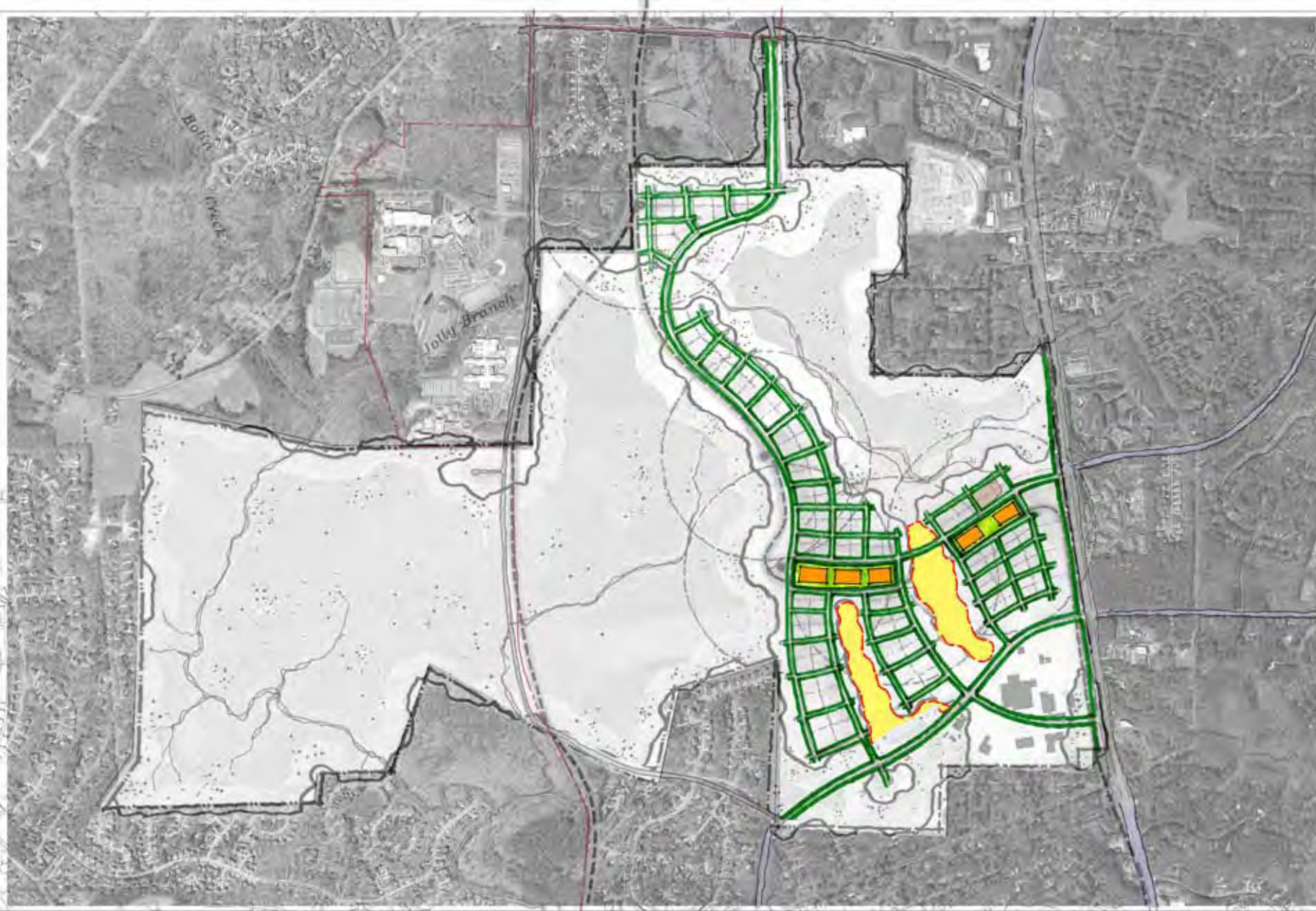


# Interwoven



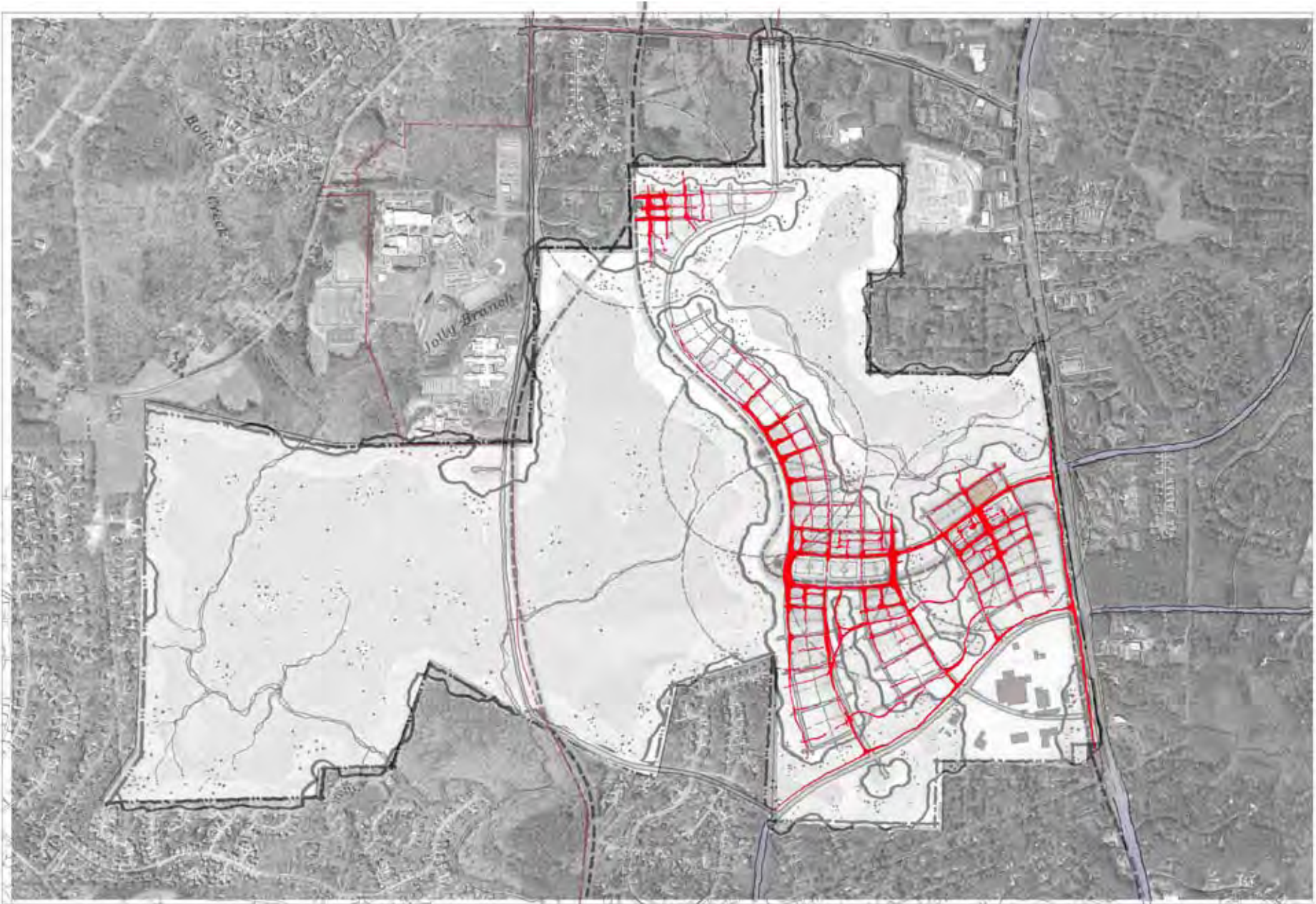


# Interwoven – Open Space





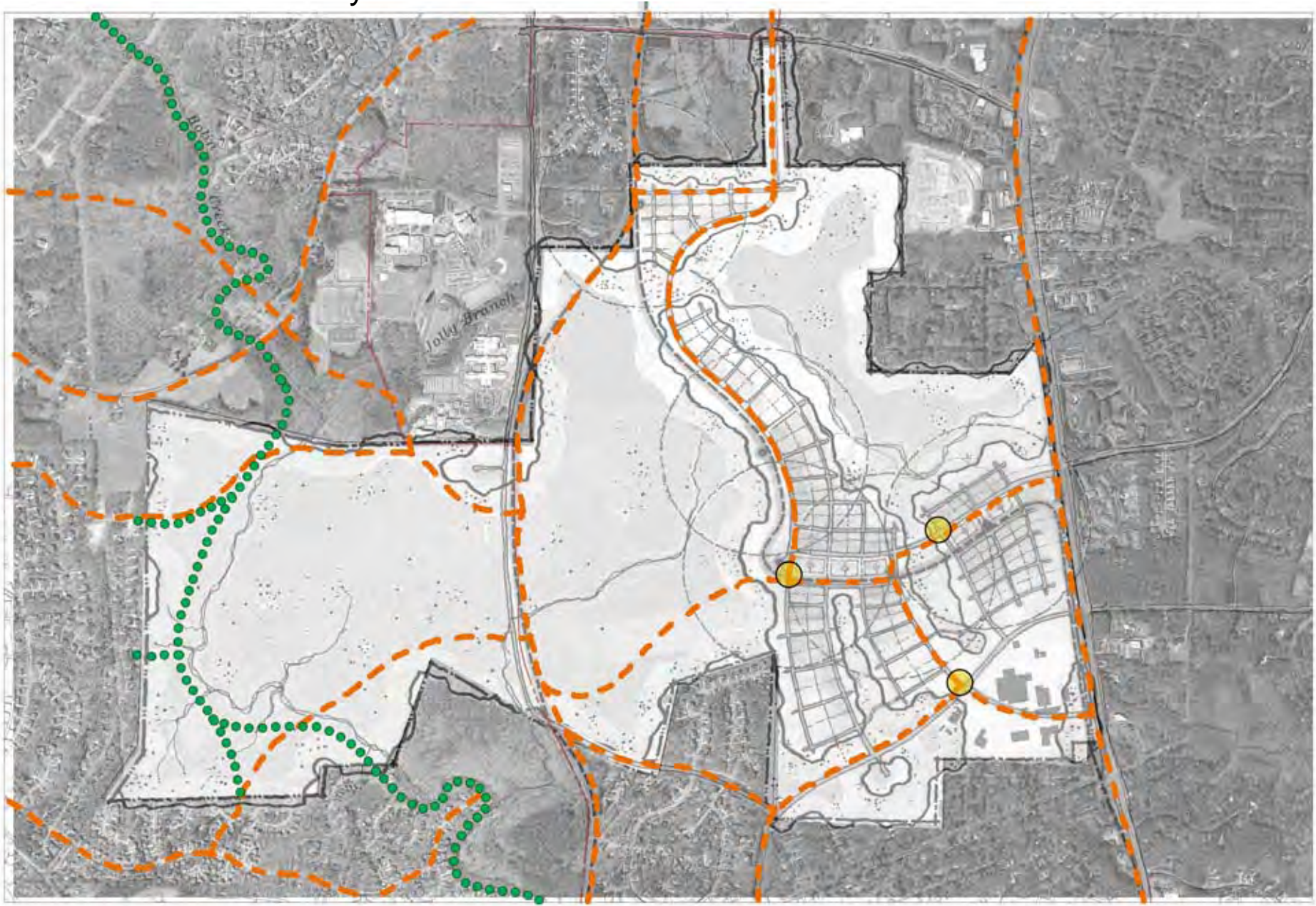
# Interwoven – Pedestrian Circulation



Pedestrian Circulation Network



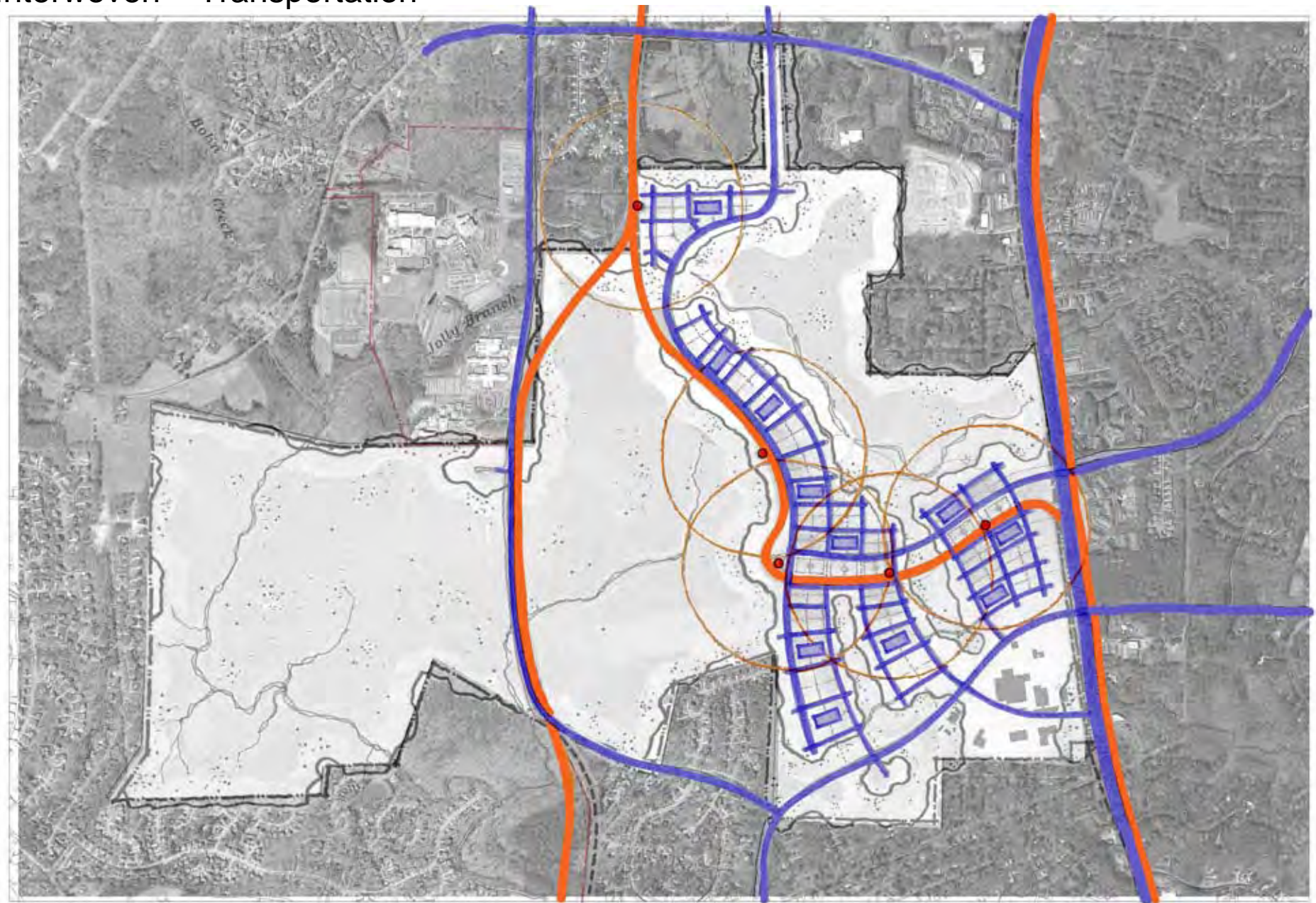
## Interwoven – Greenways / Bikes





 Bike Facility     Bike Path     Greenway



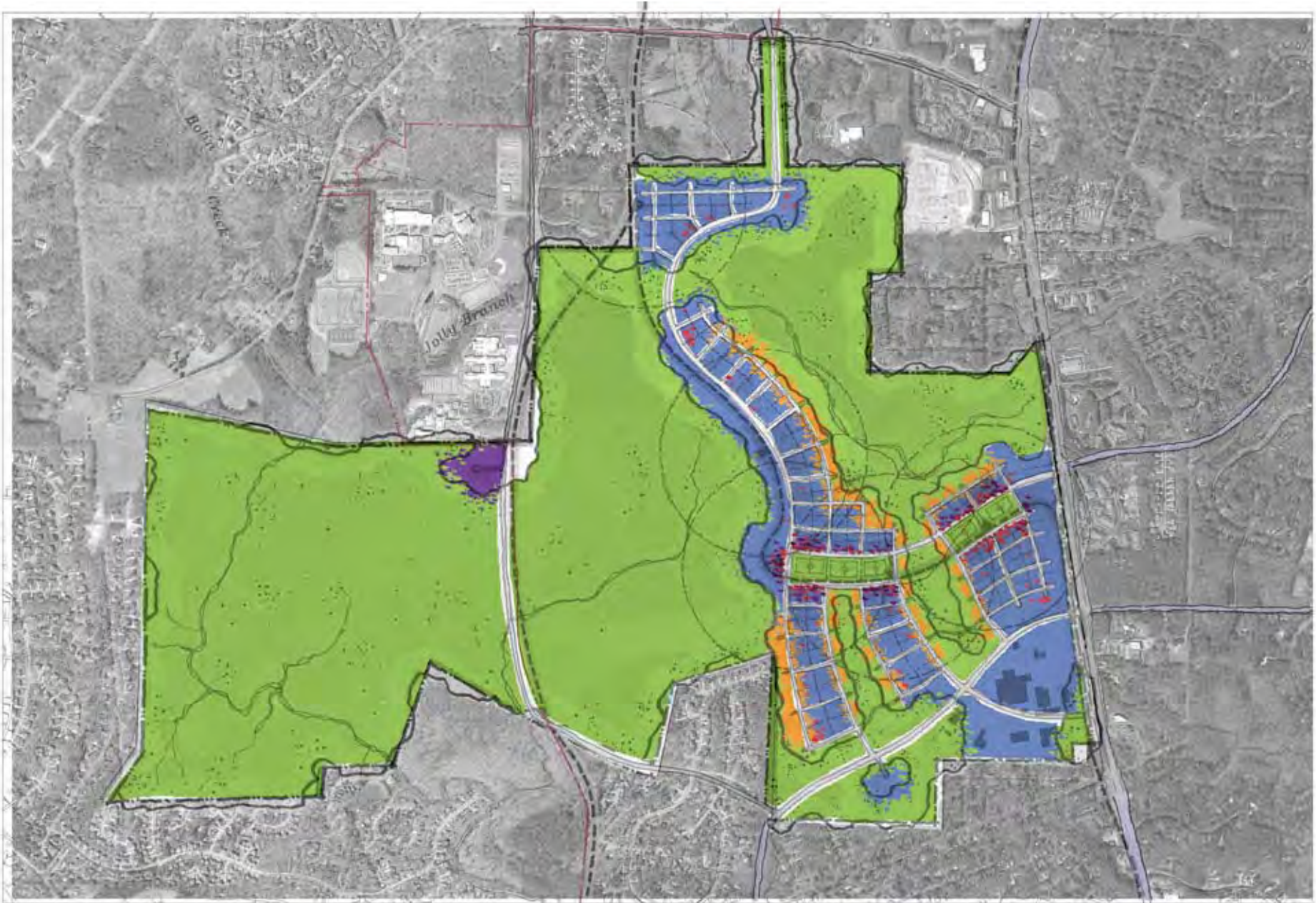
## Interwoven – Transportation



 Parking Facility    Transit Corridor    Transit Stop    Road Network



## Interwoven – Land Use



Research/Institutional



Civic



Retail/Mixed



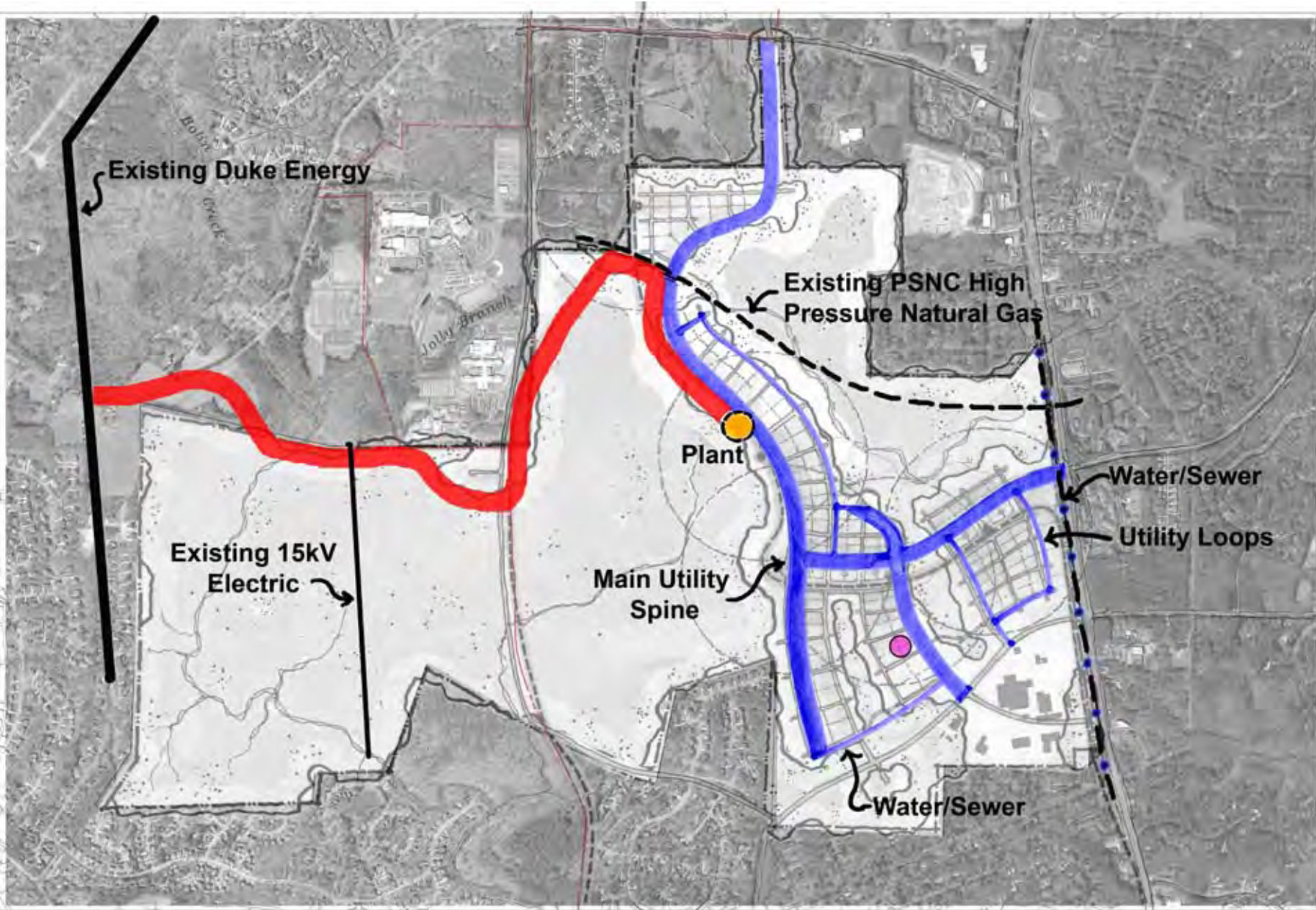
Open Space



Residential



# Interwoven – Utilities



Central Plant



Duct Bank



Early Phase Plant

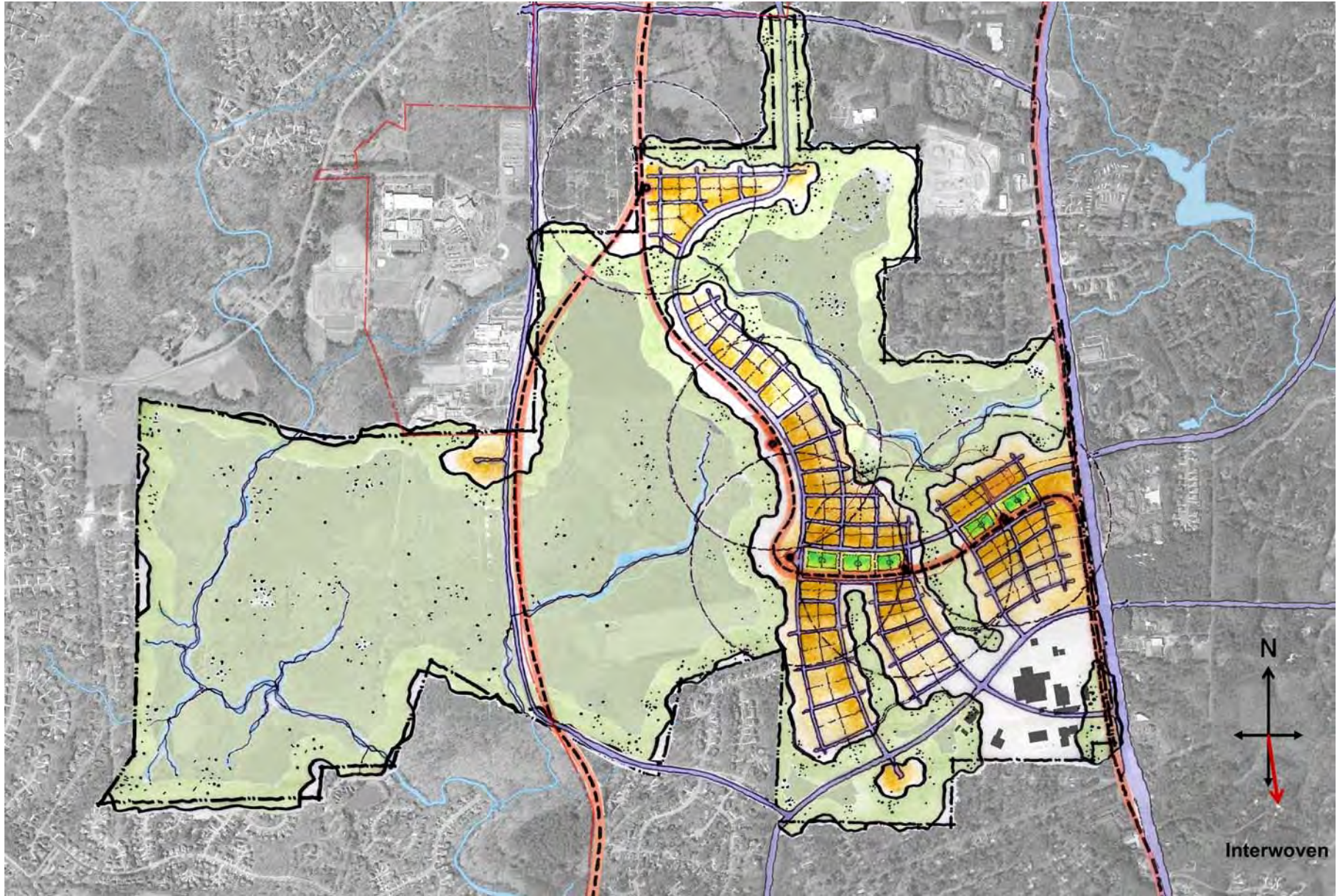


Utility Corridor

\* Need to site potential  
OWASA collection tank



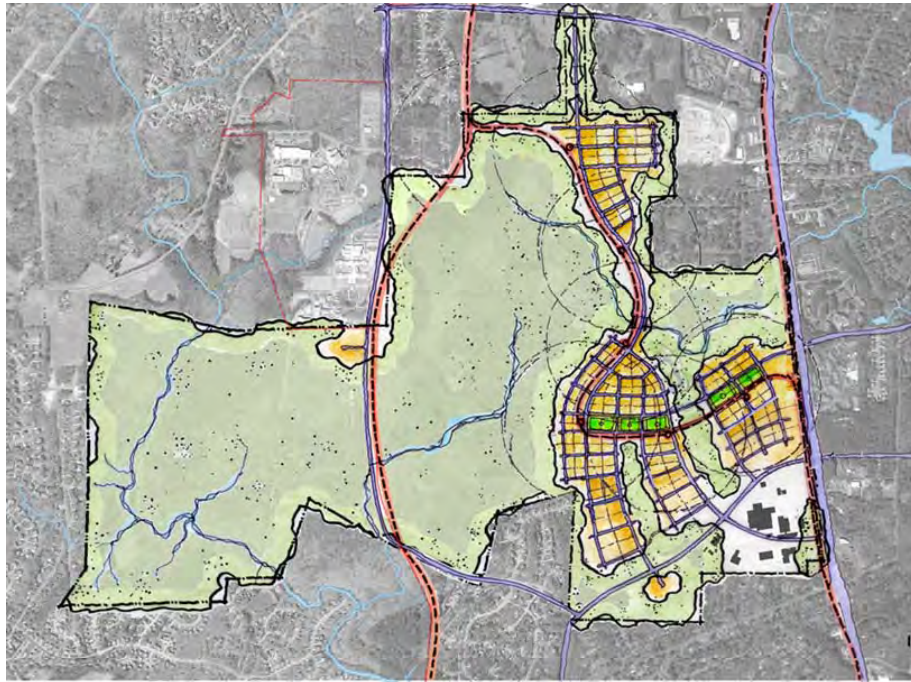
# Interwoven







# CAROLINA NORTH



## Modified Interwoven

- North-south road and transit corridor relocated to east side of Crow Branch
- Northern development node relocated east of Crow Branch to limit disturbance in sensitive ecological corridor (north section of the watershed)



