



B-41 - SITE FURNISHINGS

Site Furnishings include campus benches, bollards, waste/recycling receptacles, bus shelters, bike racks, and railing and guardrails.

B-41.1 - Campus Benches

Bench Locations

Approved benches may be placed on campus through donations to the campus development office or by specific landscape/building projects. The benches can be placed singly or in a group. The proposed locations are coordinated with the Facilities Planning & Design landscape architect, and then approved by the Chancellor's Buildings & Grounds Committee. The benches are 5 feet in length, the material is teak. The approved standard bench is a Hyde Park, Kingsley Bates bench, or equivalent (including material and weight). The bench(es) must be ADA accessible. A memorial/honorary plaque is installed with the donor benches, the plaque language and installation are coordinated by Facilities Planning & Design.

Donor Benches

A donor bench will be maintained by Facilities Services for a time frame of 10 years. A bench installed by a building or landscape project must be maintained by the department responsible for its installation.

The benches may be installed through the building/landscape project, or through a work order placed with the small construction shops. Examples of benches are shown below.





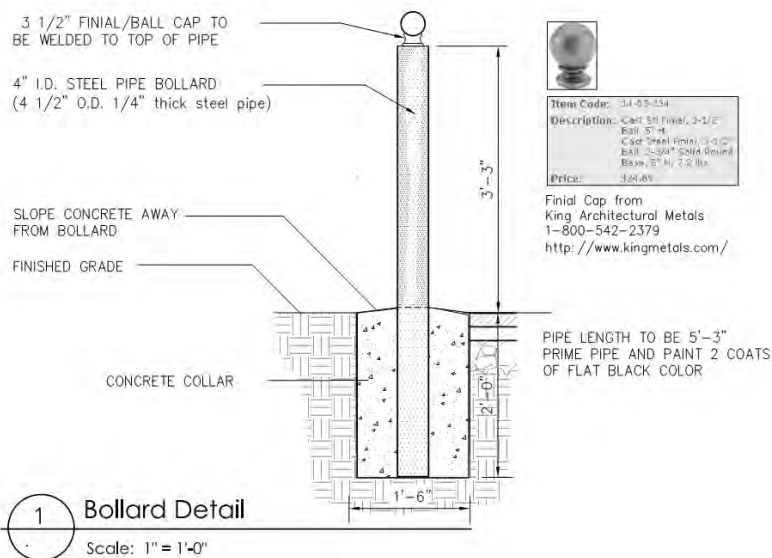
B-41.2 - Bollards

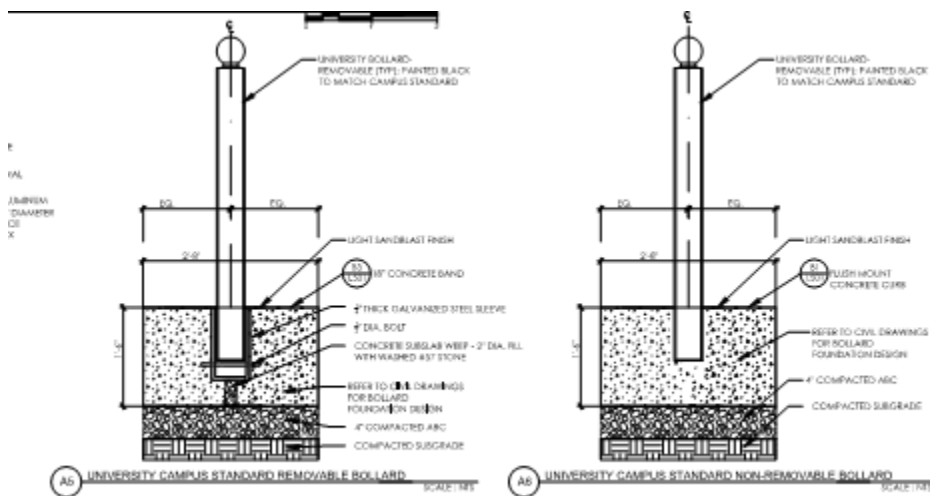
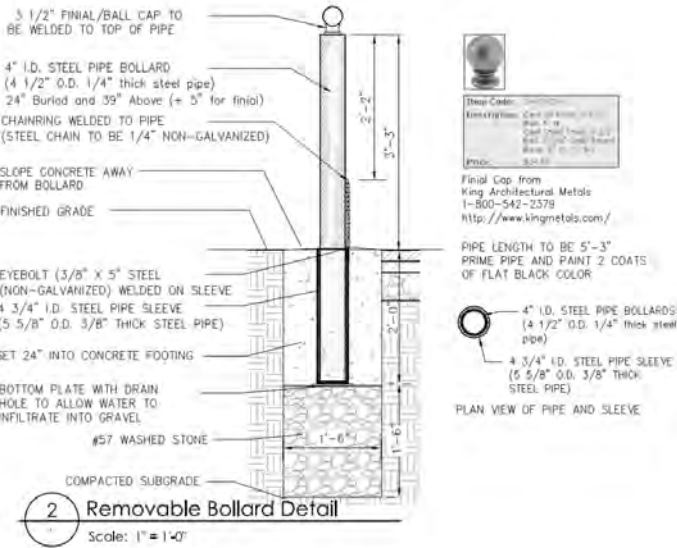
Campus bollards are required wherever there is a need to limit or prohibit vehicular circulation in specific areas. These areas are to be determined in coordination with Facilities Planning & Design, Transportation & Parking, and the Environment Health and Safety Fire Marshall.

Metal Bollards

Below are details of typical metal bollards, fixed and removable, used throughout campus. This bollard can be fabricated by the UNC Shops. Other specialty metal bollards, including a type of "lay-down" bollard may be approved in coordination with the departments described above.

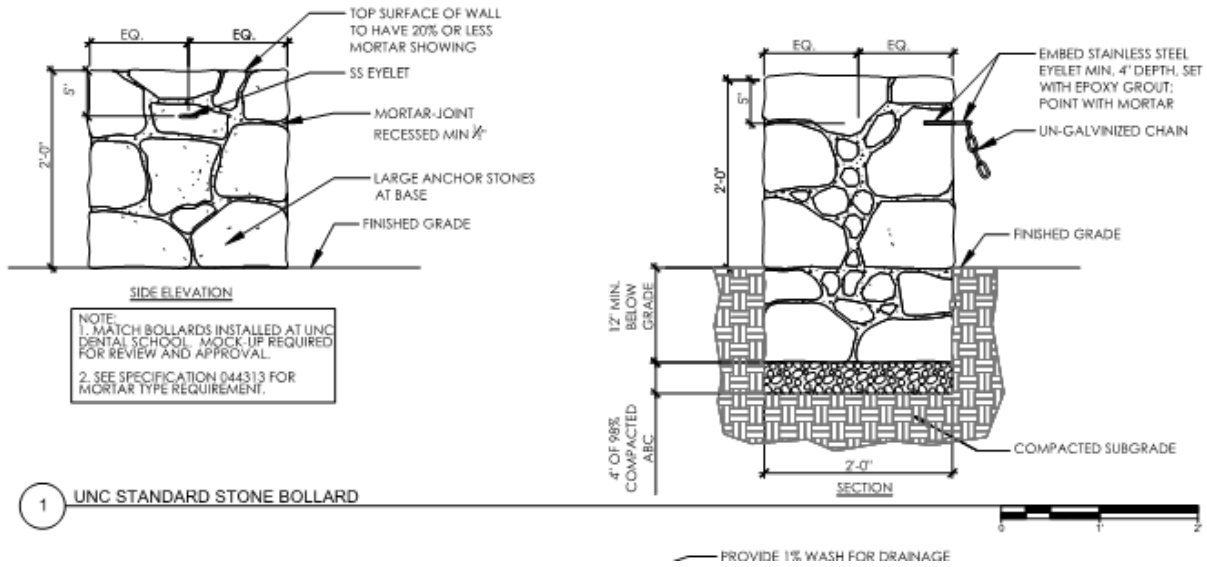
Bollards should have a minimum 48" separation from each other or other obstacles. The maximum distance between bollards is typically 5'. Distances between bollards may be reviewed individually for unique circumstances.





Stone Bollards

Stone bollards are a specialty type bollard that are typically an integral part of our pedestrian safety zone, which is a planted buffer between the back of curb and public sidewalk area. The stone for these bollards has the same requirements as our campus stone walls in stone type, color, and size. The use of these bollards is reviewed by the Facilities Planning Landscape Architect and Transportation and Parking. Where they occur in or near the public right-of-way, the NC Department of Transportation and the Town of Chapel may also require a review.





B-41.3 - Exterior Recycle/Waste Receptacles

Recycle/Waste receptacles are coordinated through the UNC Office of Waste Reduction and Recycling (OWRR) and Grounds Services. The need for Recycle/Waste receptacles will be determined with each individual project. The Facilities Planning Project Manager will assist in the coordination with OWRR and UNC Grounds Services.

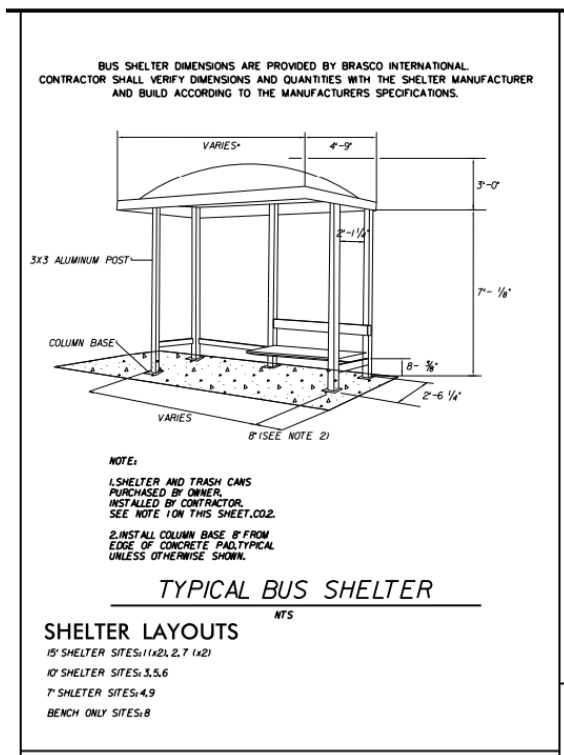
Information on UNC’s recycling programs and detailed information about planning needs for these programs is found in the Walkway Sites section of the Site and Space Planning portion of the OWRR design Guidelines. For information about the recycling and waste collection needs based on building use, see Needs Based on Building Use within the Site and Space Planning section of the website:

<https://facilities.unc.edu/wp-content/uploads/sites/256/2016/03/OWRR-Design-Guidelines.pdf>

B-41.4 - Bus Shelters

Bus shelters are a part of our campus street furnishings, but the shelter design and location of shelters around the perimeter of the campus is typically determined by the Town of Chapel Hill, in coordination with UNC Transportation & Parking and Facilities Planning & Design. The design and location of Shelters internal to campus locations will be reviewed and approved by the Facilities Planning and Design and UNC Transportation & Parking.

Bus Stops/Shelters within the historic portion of campus (the area between South Road and Franklin St.) will be reviewed and approved by the University Architect and Facilities Planning & Design.





B-41.5 - Bicycle Racks

Include bicycle parking racks and parking surface in the bid documents and consider as part of the construction costs.

Bicycle parking racks should be installed on a paved surface. Brick pavers are the preferred material. The number and site of bicycle racks is determined in joint consultation with the Department of Transportation and Parking and the Facilities Planning Project Manager and Landscape Architect. Bicycle parking sites shall be considered at the schematic design phase and final site locations indicated in the final construction documents. When siting bicycle racks choose locations that are accessible by bicycle; avoid paths with outdoor stairways. Locate each bicycle rack site as close as possible to the perceived destination of the bicyclist (doorways, entranceways, etc.) To afford protection from the elements, use building overhangs and other sheltered locations for bicycle racks when possible. Include street curb cuts and ramps for bicycle riding access to buildings and structures.

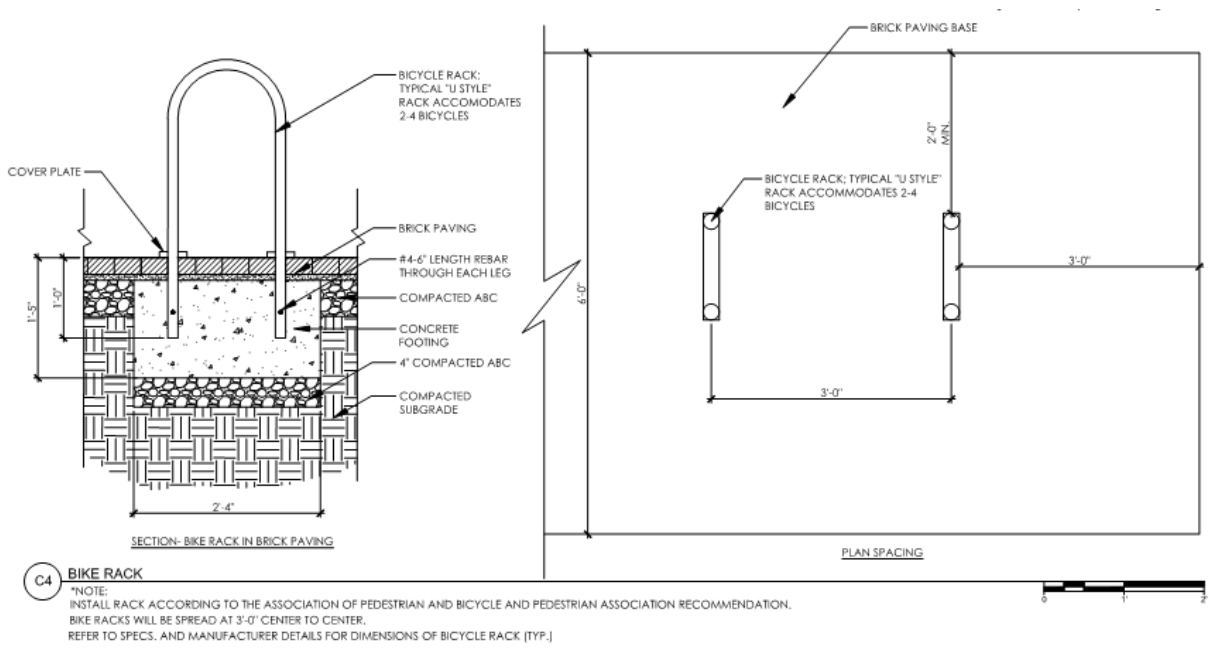


Image of the approved standard for bike racks, which is the U-shaped rack.



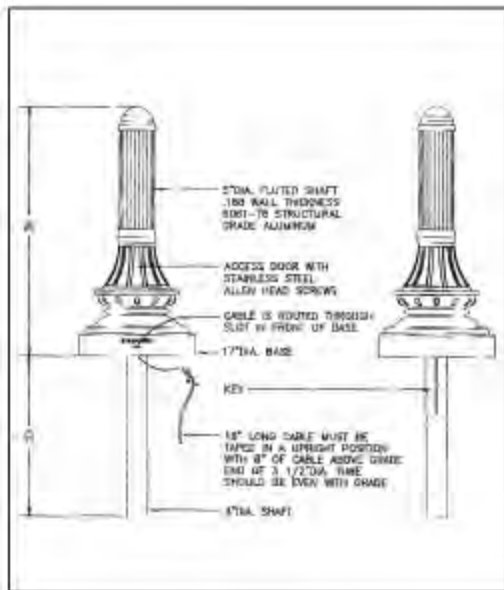
B-41.6 - Railings and Guardrails

All Railings and Guardrails on the University campus are required to meet the current versions of the NC Building Code and ADA accessibility standards.

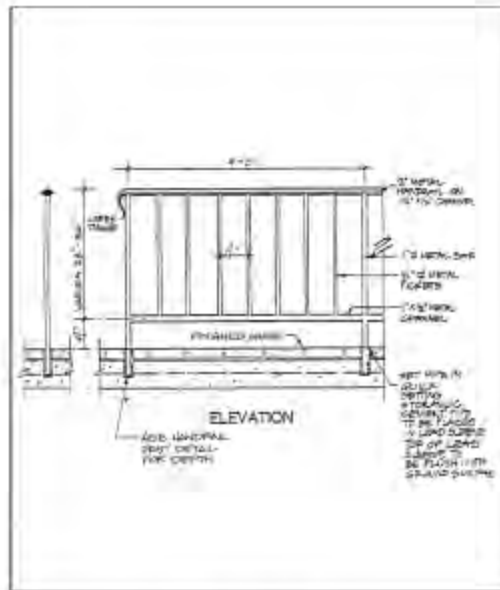
The standard approved site railings are a “Julius Bloom & Co. style” handrail and a standard steel pipe rail, both painted a glossy black. The style # for the Julius Bloom is #4429

Railings and Guardrails within the historic area of campus associated with buildings should be either the Julius Bloom style or metal pipe painted black, unless otherwise determined by the University Architect.

In areas other than the historic campus, railings and guardrails attached to the building may be of a material and style determined by the University Architect and the Facilities Planning Project Manager. Railings in the community space will be either the Julius Bloom style railing painted black, or a steel pipe rail painted black.

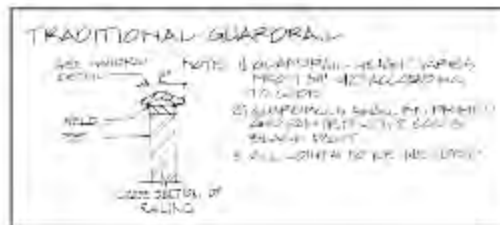


Bollards



Guardrails

- **Manufacturer:** Sternberg Vintage Lighting
7901 Oak Park Ave.
Niles, IL 60714
Phone: 847-588-3400
Fax: 847-588-3440
 - Model:** 6201
 - Size:** 3/4" = 1"
 - Finish/Color:** Verde Green
 - Special Features:** Welded for single unit construction
Removable
- or similar —



- The ornamental lamb's tongue end piece should match the end piece used on handrails to complement one another.
- Bronze railings are preferred.
- Painted steel is acceptable.